

STANDARD DEPARTURE CHART
INSTRUMENT (SID)

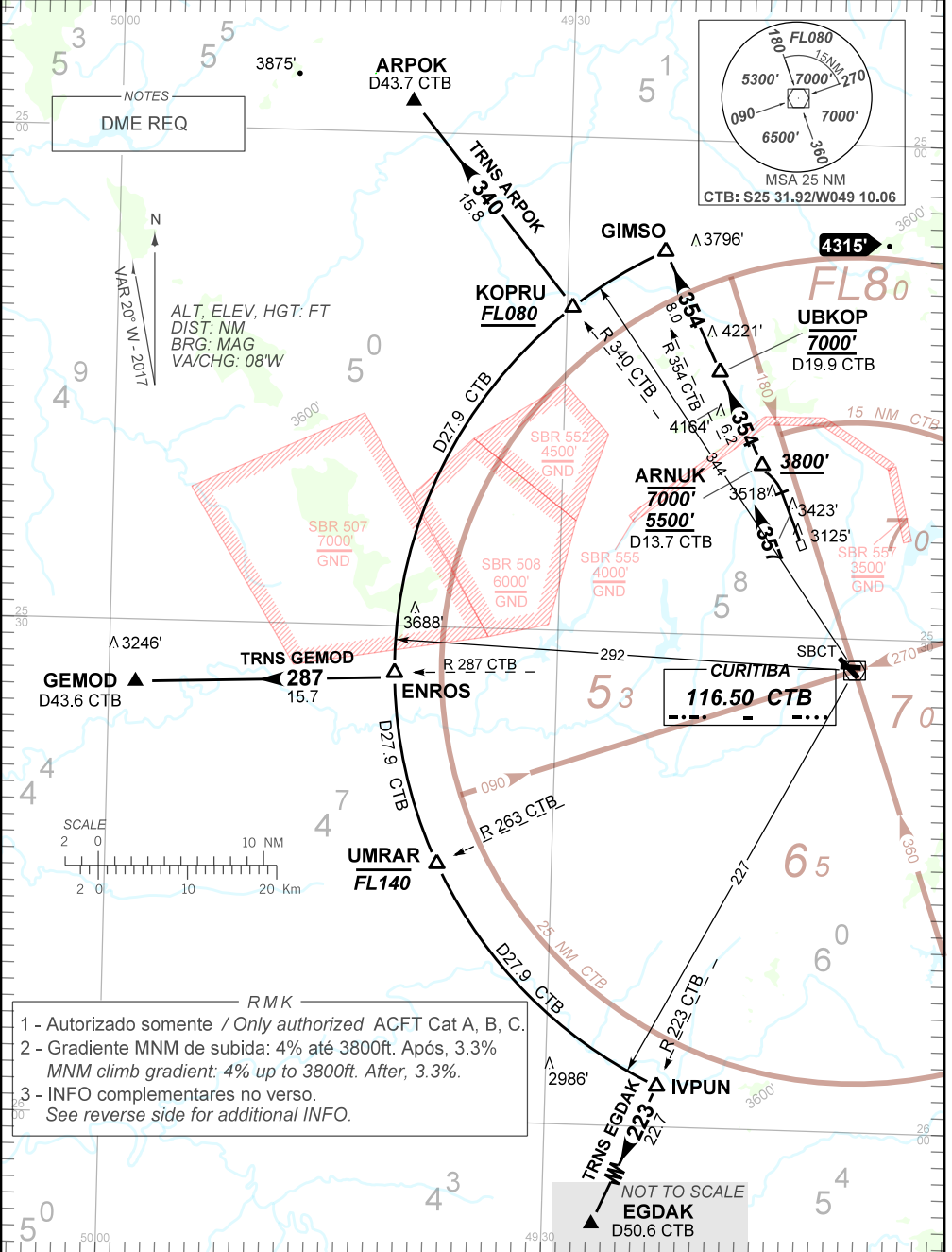
CURITIBA / Bacacheri (SBBI)

RWY 36

KOPRU 1A

AD ELEV: 3059'

TA 7000'	TWR BACACHERI 118.90	APP CURITIBA 119.70 119.95 120.65 129.55 120.95 133.15 121.50	ACC CURITIBA 124.90 125.80 126.10 127.20 127.50 133.80 121.50
----------	-------------------------	---	---



CHANGES: RMK.

RMK

4 - Obstáculos próximos não considerados para o cálculo do (PDG):

Close-in obstacles not considered for procedure gradient (PDG):

Árvore / Tree: a partir de / from THR18, AZM 019, DIST 701m, ELEV 3125'.