

INSTRUMENT APPROACH
CHART (IAC)

PORTO ALEGRE / Salgado Filho, INTL (SBPA)

AD ELEV: 12'

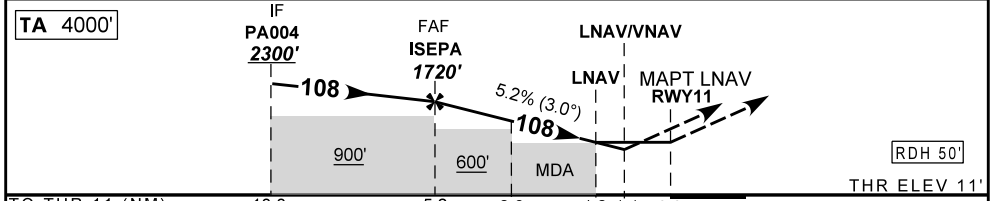
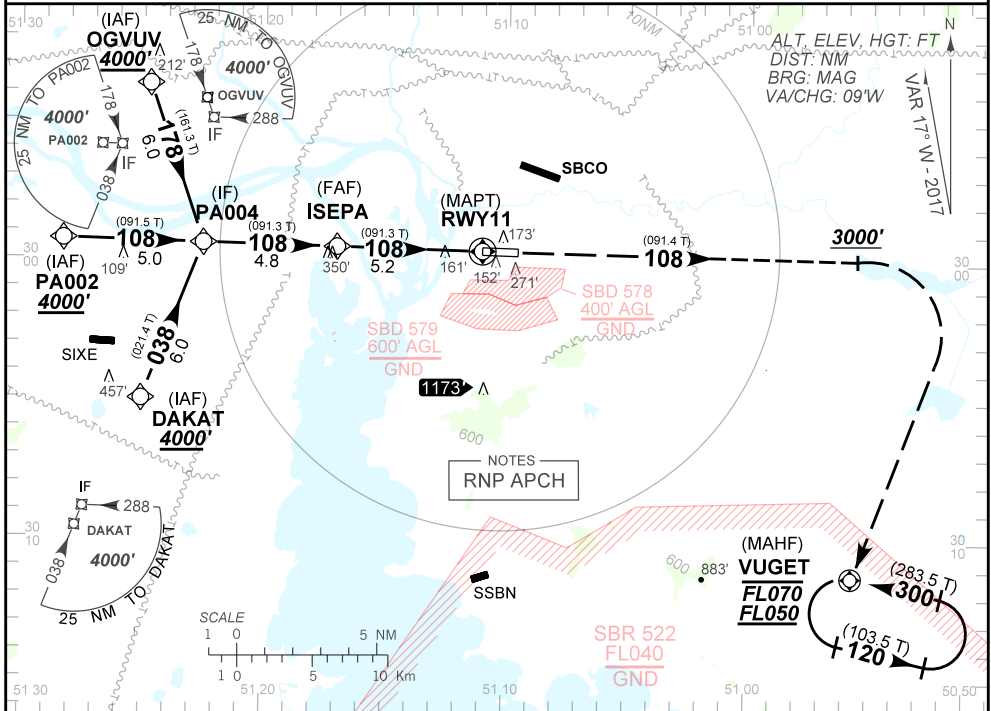
RNAV (GNSS) RWY11

D-ATIS 132.35	APP PORTO ALEGRE 119.00 120.10 120.55 128.90 121.50	TWR PORTO ALEGRE 118.10 121.50	GNDC PORTO ALEGRE 121.90
------------------	--	-----------------------------------	-----------------------------

N/A	FINAL CRS 108°	FAF: 1720'	LNAV/VNAV DA / (OCH): 407' / (396')	LNAV: MDA / (OCH): 450' (440')
-----	-------------------	---------------	--	-----------------------------------

APCH Perdida: Subir para **F1050** no rumo **108**. Ao passar **3000**, curvar à DIREITA direto VUGET para espera.
Missed APCH: Climb to **F1050** on course **108**. On passing **3000**, turn RIGHT direct to VUGET for holding.

RMK: Para sistemas não compensados, LNAV/VNAV NÃO AUTORIZADO abaixo de -10°C.
RMK: For uncompensated systems, LNAV/VNAV procedure NOT AUTHORIZED below -10°C.



TO THR 11 (NM)	10.0	5.2	2.0	1.2	1.1	0.0									
	ISEPA	4.0	3.0	2.0	1.2	RWY11	KT	090	110	130	150	170	190		
	1720	1335	1016	698	450	ALT	FPM	500	600	700	800	900	1000		
	1709	1324	1005	687	439	(HGT)	FAF-MAPT	NA							

STRAIGHT-IN	CAT	A	B	C	D	E
	DA / OCH / TETO	407' / (396') / 400'				NA
LNAV/VNAV	ALS/NO ALS/ RVR ALS (m)	1100 / 1800 / NIL				
	MDA / OCH / TETO	450' / (440') / 500'				
LNAV	ALS/NO ALS/RVR ALS (m)	1100 / 1800 / NIL		1300 / 2000 / NIL		
	MDA / OCH / TETO	NA				
CIRCLING	MDA / OCH / TETO	NA				
	VIS (m)	NA				

CHANGES: NEW CHART.