

ADC - SBFL: INFORMAÇÕES COMPLEMENTARES / COMPLEMENTARY INFORMATION

CARACTERÍSTICAS FÍSICAS / PHYSICAL CHARACTERISTICS											
PISTA RUNWAY				DIMENSÕES(m) DIMENSIONS(m)				PCN	TIPO DE SUPERFÍCIE SURFACE KIND		
RWY	BRG MAG	Tipo Type	RCD	RWY	SWY	CWY	STRIP	RWY	RWY	SWY	
a	b	c	d	e	f	g	h	i	j	k	
14	142	CAT-I	4C	2400x45			2520 x 280	48/F/B/X/T	ASPH		
32	322	NPA	4C								
03	033	NPA	2B	1320x45			1440 x 80	26/R/B/X/T	CONC		
21	213	NPA	2B								

**DISTÂNCIAS DECLARADAS, AUXÍLIOS VISUAIS E COORDENADAS DAS CABECEIRAS
DECLARED DISTANCES, VISUAL AIDS AND THRESHOLD COORDINATES**

RWY	TORA(m)	TODA(m)	ASDA(m)	LDA(m)	AUXÍLIOS / AIDS	ALTURA GEODAL(m) GEOD HEIGHT(m)	COORDENADAS COORDINATES
14	2400	2400	2400	2400	PAPI	0.54m	S27 39 57 W048 33 04
32	2400	2400	2400	2400	PAPI	0.54m	S27 40 37 W048 31 50
03	1180	1320	1180	1180		0.57m	S27 40 31 W048 33 15
21	1320	1320	1320	1180		0.54m	S27 39 53 W048 33 06

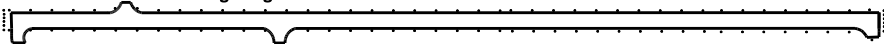
SERVIÇO DE SALVAMENTO E CONTRAINCÊNDIO / RESCUE AND FIRE FIGHTING SERVICE: RFFS REQ - 7

RWY 14 / 32

Sinalização horizontal / Marking Aids



Auxílios luminosos / Lighting Aids

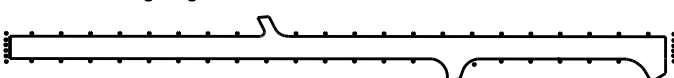


RWY 03 / 21

Sinalização horizontal / Marking Aids



Auxílios luminosos / Lighting Aids



RMK: MEHT - RWY 14 - 50FT.
RWY 32 - 63FT.

CHANGES: THR, PONTO CHECK VOR, RWY, STRIP, APRON, TMY, LAYOUT