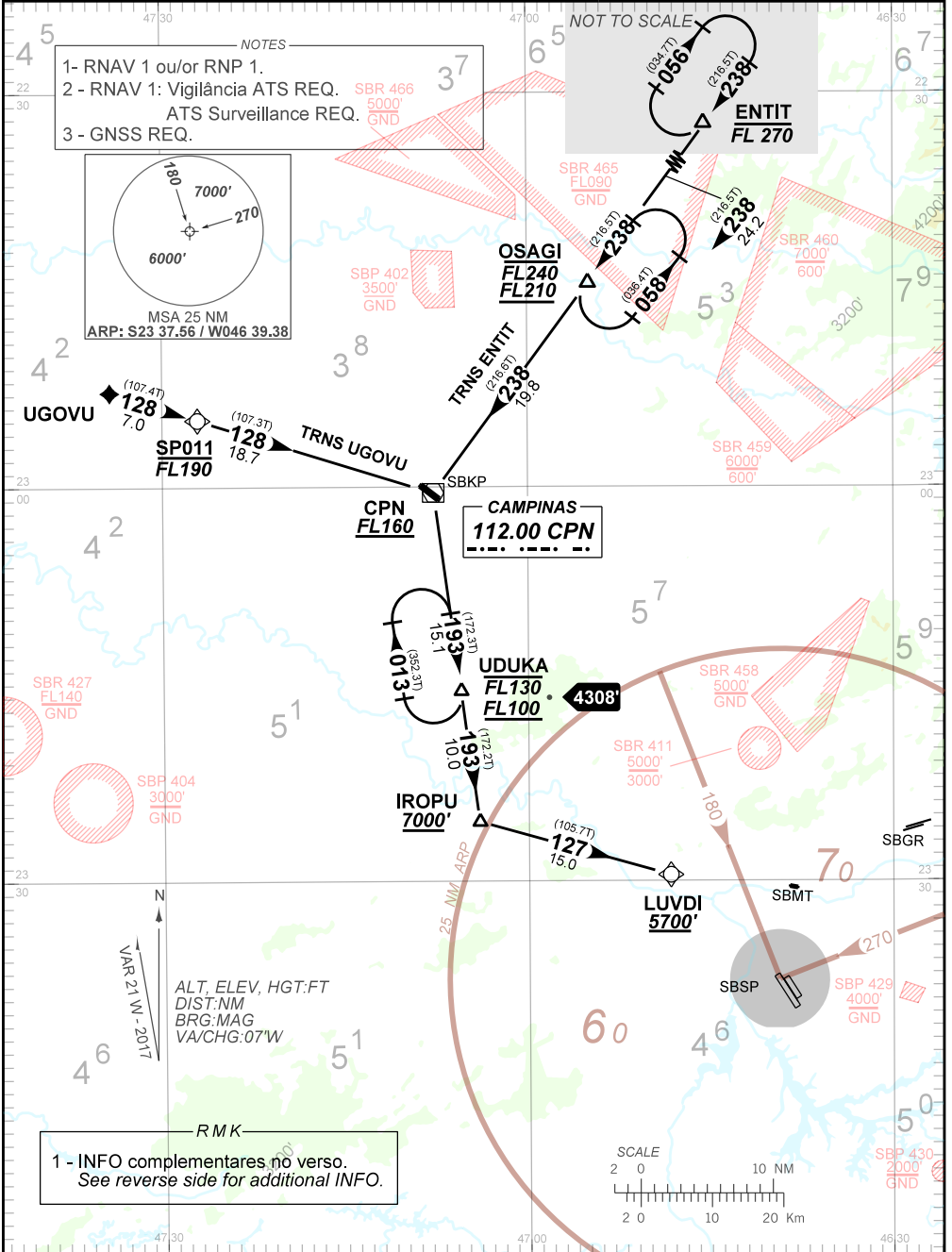


STANDARD ARRIVAL CHART
INSTRUMENT (STAR)

SÃO PAULO / Congonhas (SBSP)
RWY 17L/17R
RNAV CPN 2A

AD ELEV: 2631'

TA 8000'	D-ATIS 127.65	ACC CURITIBA 125.075 132.10 126.95 121.50	ACC BRASÍLIA 123.35 134.00 126.80 128.50 126.15 121.50	APP SÃO PAULO 129.75 119.15 120.45 120.85 133.85 121.50	TWR CONGONHAS 118.05 127.15 121.50
----------	------------------	---	--	---	--



CHANGES: NEW CHART.

AD ELEV: 2631'

COMMUNICATION FAILURE

CHEGADA CPN 1A / CPN 1A ARRIVAL

Acionar transponder A7600, então completar chegada até LUVDI e executar o procedimento autorizado pelo ATC.

Set transponder A7600, then complete arrival up to LUVDI and execute procedure authorized by ATC.

CHANGES: NEW CHART.