

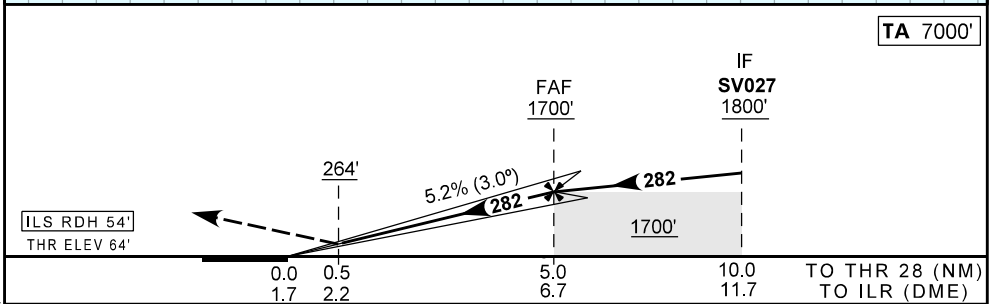
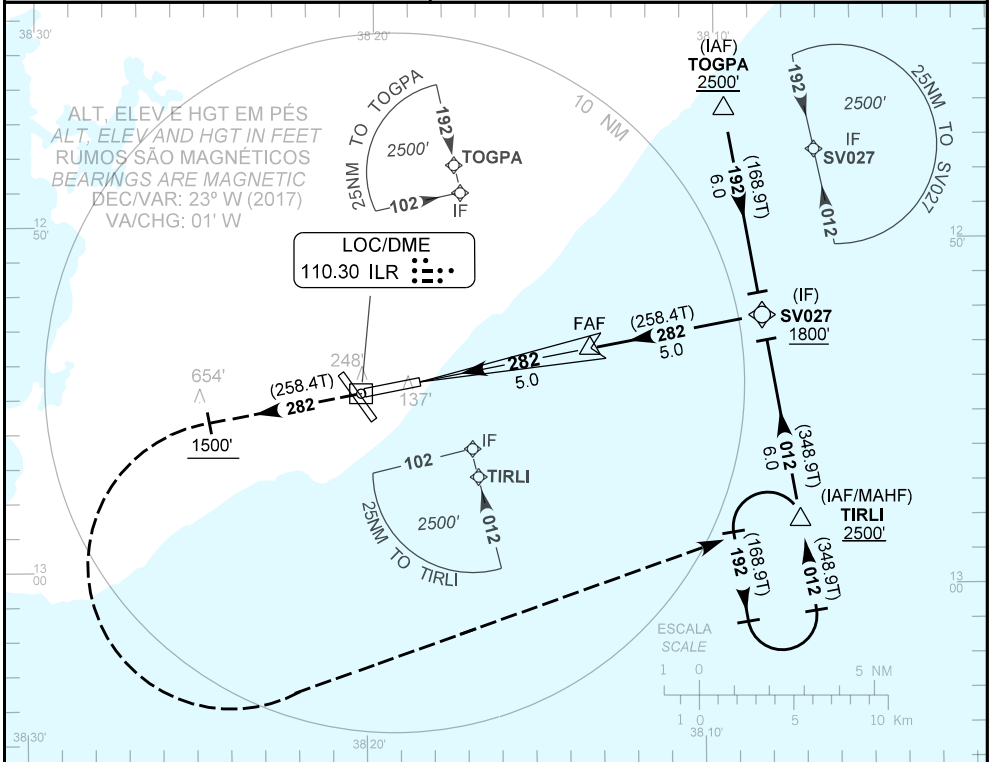
CARTA DE APROXIMAÇÃO
POR INSTRUMENTOS (IAC)

SALVADOR / Deputado Luís Eduardo Magalhães, INTL (SBSV)

INSTRUMENT APPROACH CHART (IAC)

ILS Z RWY 28

AD ELEV: 66'	ATIS 127.75	APP SALVADOR 119.35 119.80 120.80 129.45	TWR SALVADOR 118.30 118.60 118.95 121.10 121.50	GNDC SALVADOR 121.90
RMK: 1) RNAV 1 ou/or RNP 1 2) D-ATIS AVBL via DATALINK.		Aproximação Perdida: Subir para 2500'. Manter rumo 282 até cruzar 1500'. Então, curvar à esquerda direto TIRLI para Espera. Missed Approach: Climb to 2500'. Maintain course 282 until passing 1500'. Then, turn left direct to TIRLI for holding.		



RWY28	NIL					KT	090	110	130	150	170	190
ALT	NIL					FPM	500	600	700	800	900	1050
(HGT)	NIL					FAF-MAPT	NIL					
POUSO DIRETO STRAIGHT-IN	CAT	A	B	C	D	E						
CAT I	DA / OCH / TETO	264 / 200 / 200					NA					
	ALS/NO ALS/ RVR ALS (m)	NIL / 1200 / NIL										
CIRCULAR TO CIRCLE	MDA / OCH / TETO	NA										
	VIS (m)											

MODIFICAÇÕES / CHANGES: CARTA NOVA/NEW CHART.