

STANDARD DEPARTURE CHART
INSTRUMENT (SID)

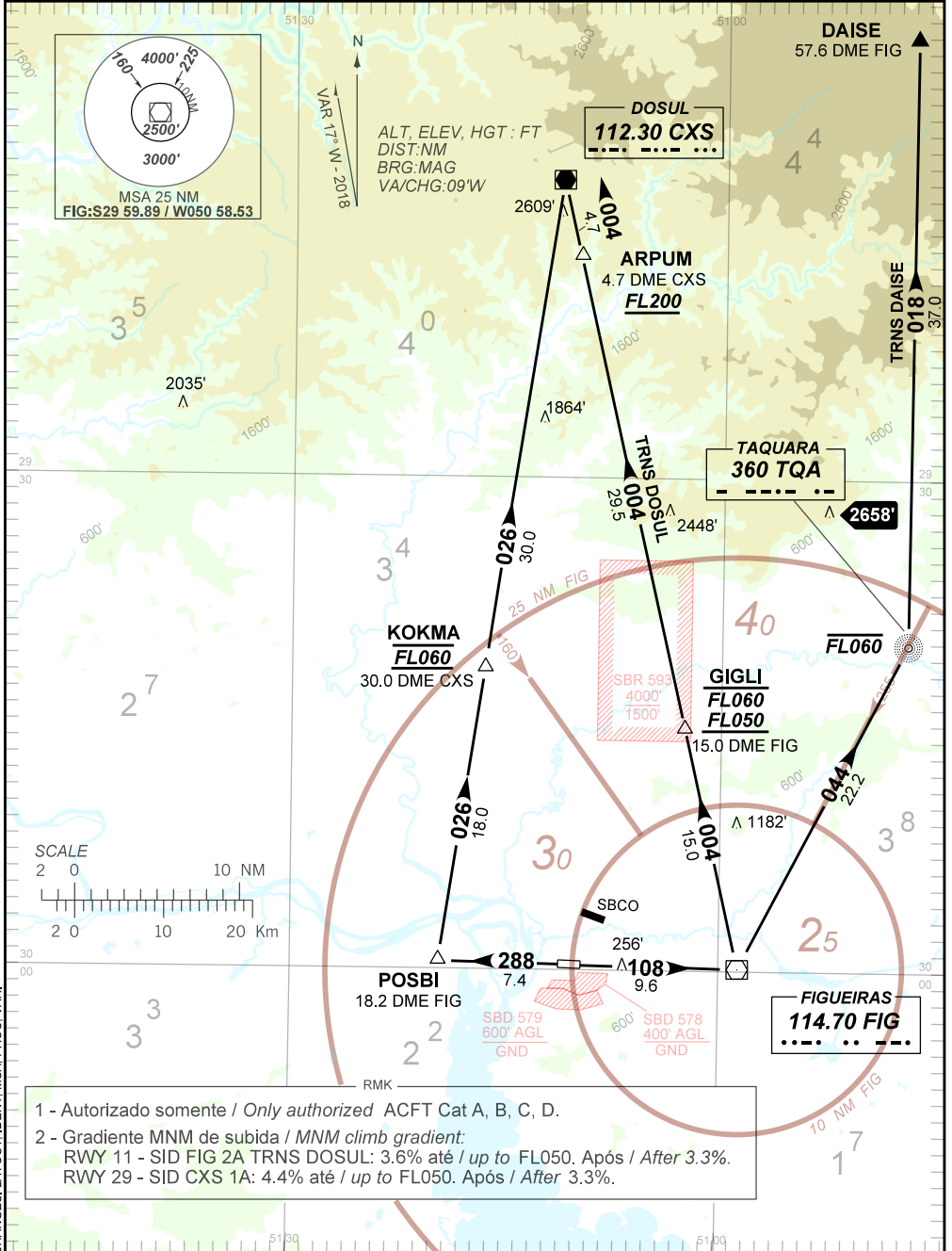
PORTO ALEGRE / Salgado Filho, INTL (SBPA)

RWY 11/29

CXS 1A - FIG 2A

AD ELEV: 12'

TA 4000'	D-ATIS 132.35	TWR PORTO ALEGRE 118.10 121.50	APP PORTO ALEGRE 119.00 120.10 120.55 128.90 121.50	ACC CURITIBA 127.40 126.75 135.85 128.45 121.50
----------	------------------	-----------------------------------	---	---



CHANGES: LAYOUT, IDENT, MSA, PROC, VAR.

— R M K —

- 3 - MNM IFR BLW MNM regulares / regular para / for DEP:
Teto / ceiling NO REQ / RVR 400m / VIS 600m.
Observar compulsoriamente a Seção INS da AIP-MAP.
INS Section of AIP-MAP shall be observed.
- 4 - INFO complementares no verso
See reverse side for additional INFO
- 5 - Obstáculos próximos não considerados para cálculo do (PDG):
Close-in obstacles not considered for procedure gradient (PDG):
DEP RWY 11: Árvores / Trees : a partir de / from THR29, AZM 160, DIST 150m, ELEV 68'.
- 6 - Aeronaves com destino a SBCX: desconsiderar a restrição de nível no fixo ARPUM.
Aircraft from SBPA to SBCX: disregard vertical restriction at ARPUM.