

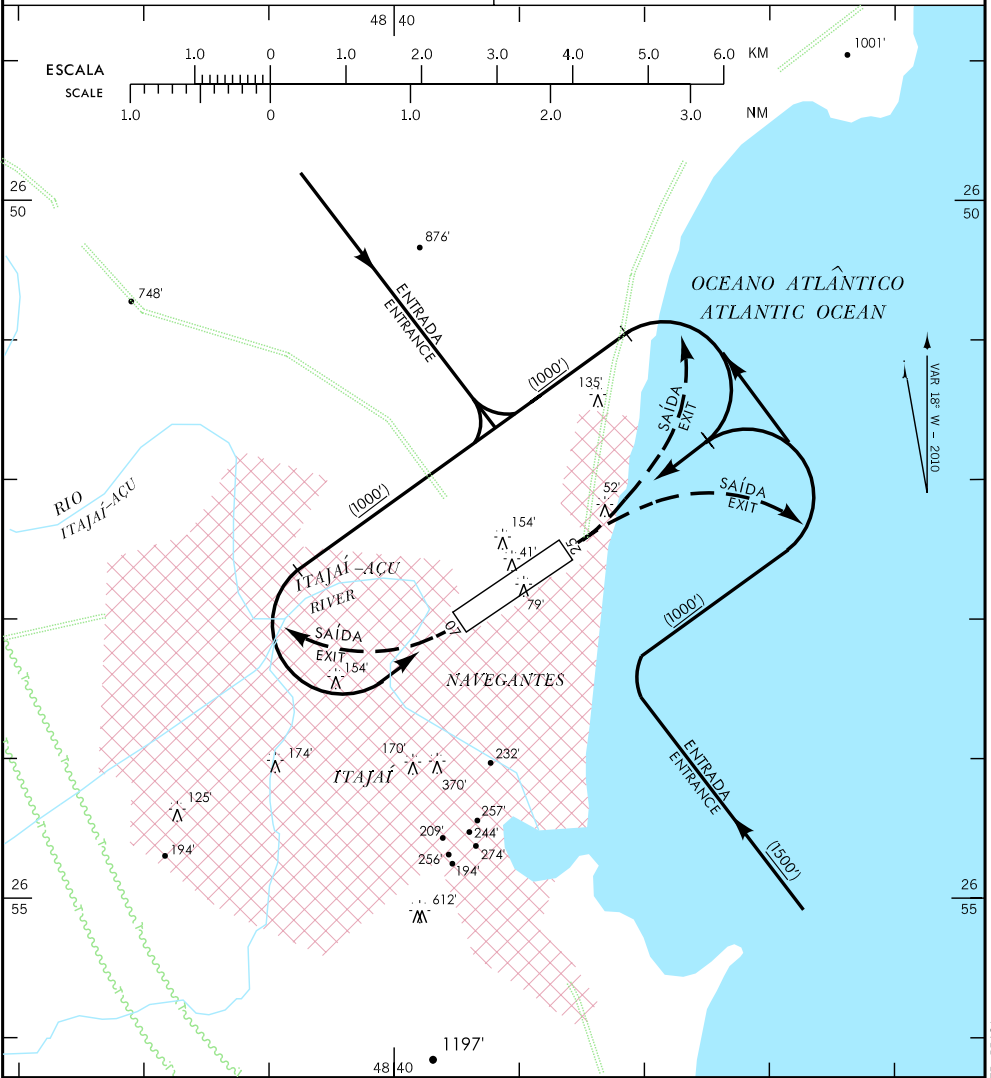
VAC - SBNF WGS84

RWY 07/25

ELEV 18'

APP NAVEGANTES 119.50
TWR NAVEGANTES 118.20

GNDC NIL
ATIS 127.625



RMK:

- 1- AERONAVES PROCEDENTES DO SETOR SUL/SW DEVERÃO ENTRAR NO CIRCUITO PELO PONTO MÉDIO DA PISTA 07/25.
1 - AIRCRAFTS FROM SOUTH/SW SECTOR MUST ENTER TRAFFIC PATTERN TROUGH 07/25 RUNWAY MIDDLE POINT.
- 2- AERONAVES ENTRANDO PELO SETOR SUL/SE/SW DEVERÃO OBSERVAR GUINDASTES BALIZADOS A 1640 M DA THR 07, ELEVACÃO 370 FT.
2 - AIRCRAFTS ENTERING FROM SOUTH/SE/SW SECTOR MUST OBSERVE LIGHTED TOWER CRANES AT 1640 M FROM 07 THR, ELEVATION 370 FT.

X:\NAVEGANTES-SBNF\bnf_vac.dgn

DEPARTAMENTO DE CONTROLE DO ESPAÇO AEREO - COMAER - BRASIL