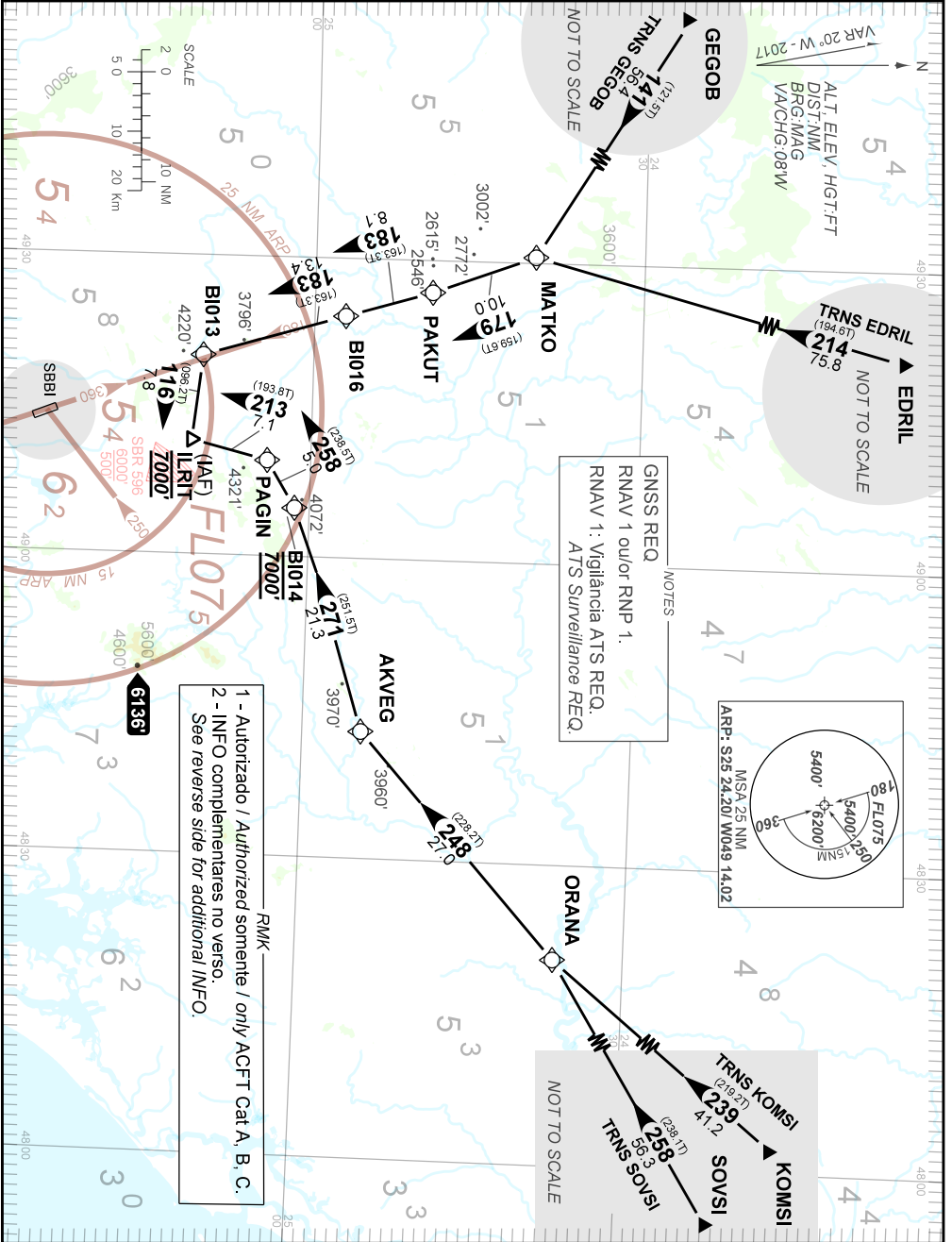


STANDARD DEPARTURE CHART
INSTRUMENT (STAR)

CURITIBA / Bacacheri (SBBI)
RWY 18/36
RNAV ILRIT 1A

AD ELEV: 3059'

TA 7000'	ATIS 132.325	ACC CURITIBA 126.50 132.80 126.95 128.25 125.80 127.20 121.50	APP CURITIBA 119.70 119.95 120.65 120.95 129.55 133.15 121.50	TWR BACACHERI 118.90
----------	--------------	---------------------------------------------------------------------	---------------------------------------------------------------------	-------------------------



FALHA DE COMUNICAÇÃO
COMMUNICATION FAILURE

Acionar transponder A7600, completar chegada até ILRIT e executar procedimento em uso pelo ATC.
Set transponder A7600, complete arrival to ILRIT and perform procedure in use by ATC.