

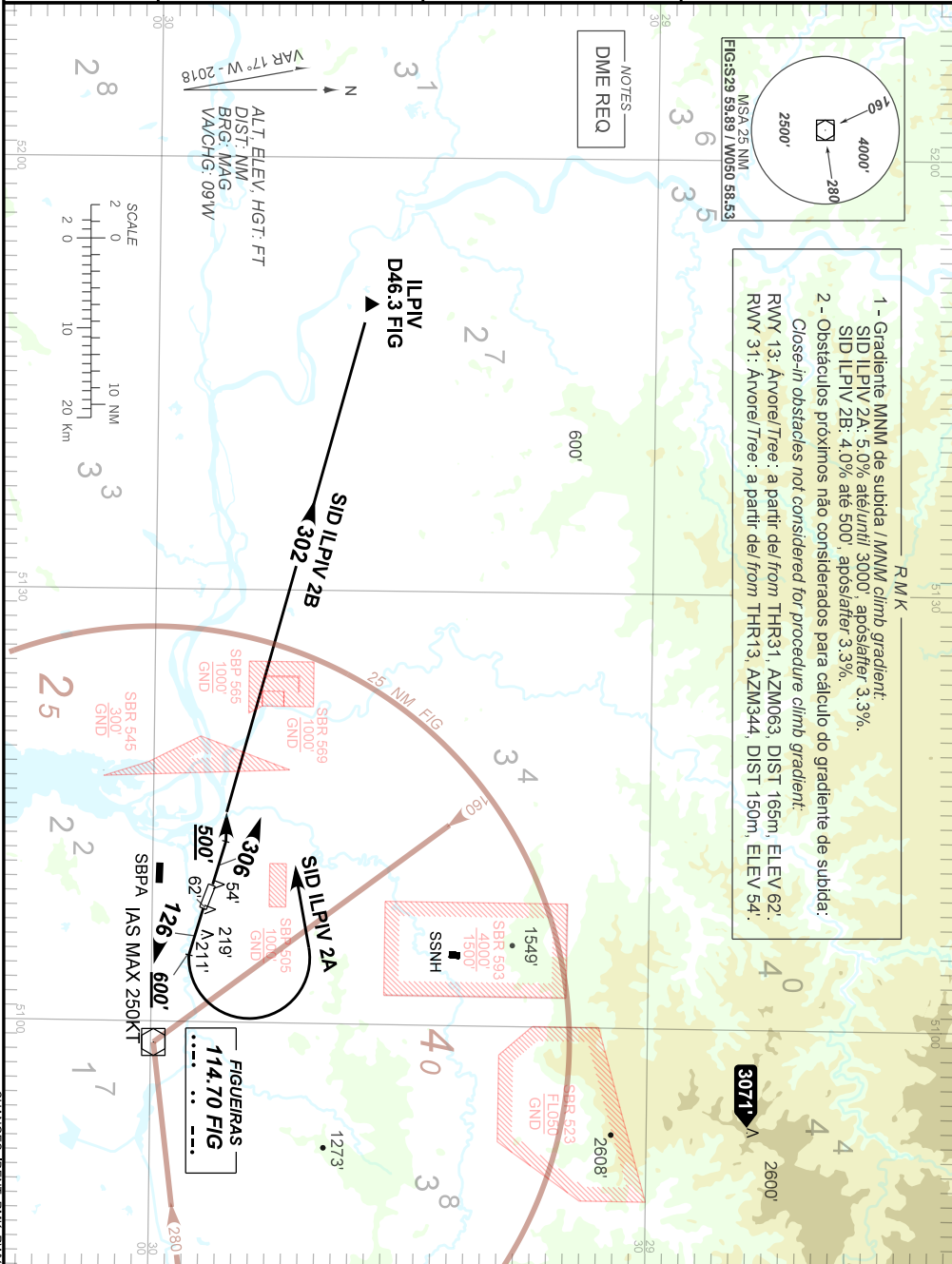
STANDARD DEPARTURE CHART  
INSTRUMENT (SID)

PORTO ALEGRE / Canoas, MIL (SBCO)

RWY 13/31  
ILPIV 2A, 2B

AD ELEV: 26'

TA 4000'	TWR CANOAS 118.50 122.80 (MIL) 121.50	APP PALEGRE 119.00 120.10 120.55 128.90 121.50	ACC CURITIBA 126.75 127.40 128.45 135.85 121.50
----------	--	--	---



1 - Gradiente MNM de subida / MNM climb gradient:  
SID ILPIV 2A: 5,0% até/until 3000', após/after 3,3%.  
SID ILPIV 2B: 4,0% até 500', após/after 3,3%.  
2 - Obstáculos próximos não considerados para cálculo do gradiente de subida:  
*Close-in obstacles not considered for procedure climb gradient:*  
RWY 13: Anorel/Tree: a partir/dei from THR31, AZM063, DIST 165m, ELEV 62'.  
RWY 31: Anorel/Tree: a partir/dei from THR13, AZM344, DIST 150m, ELEV 54'.

NOTES  
DME REQ



CHANGES IDENT. RMK. RWY.