

**INSTRUMENT APPROACH
CHART (IAC)**

PATO BRANCO / Juvenal Loureiro Cardoso (SBPO)

RNAV(GNSS) RWY 25

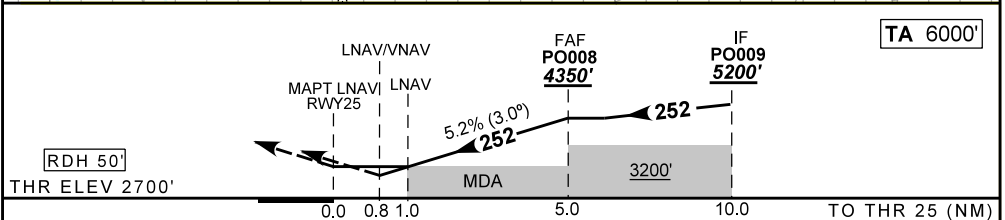
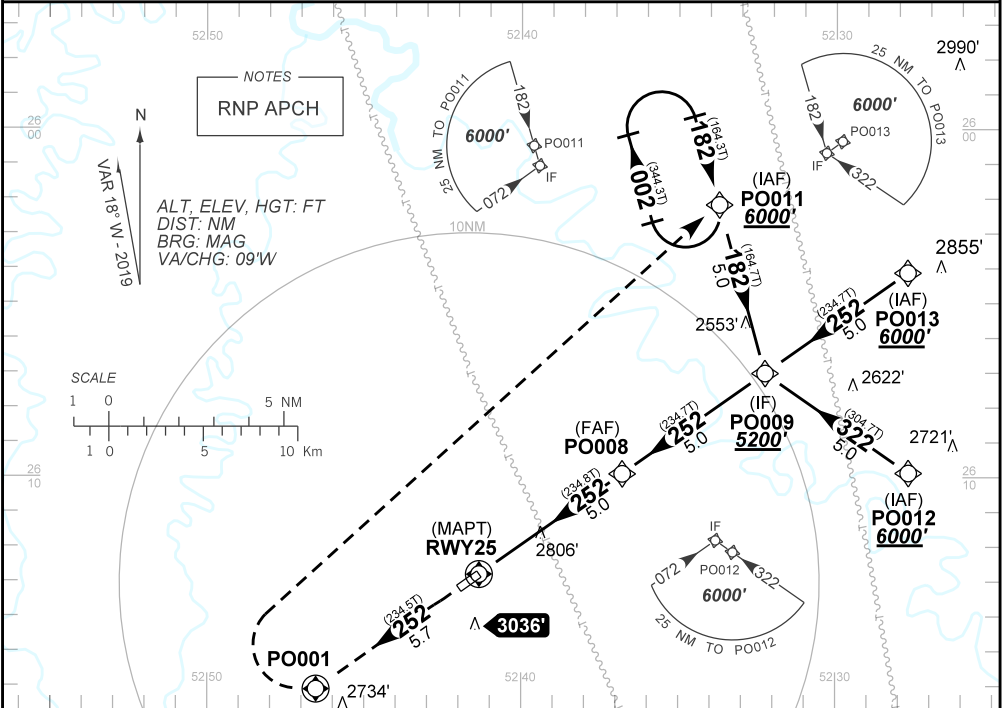
AD ELEV: 2700'

ATIS NIL	APP NIL	AFIS PATO BRANCO 130.80	GNDC NIL
N/A	FINAL CRS 252°	FAF 4350'	LNAV MDA / (OCH): 3060' / (360')

APCH Perdida: Subir para **6000'**. Manter rumo **252** até PO001. Após, curvar à DIREITA direto PO011 para espera.

Missed APCH: Climb to **6000'**. Maintain course **252** up to PO001. After, turn RIGHT direct to PO011 for holding.

RMK: Para sistemas não compensados Baro-VNAV, LNAV/VNAV NÃO AUTORIZADO abaixo de -10°C ou acima de 50°C.
For uncompensated systems Baro-VNAV, LNAV/VNAV NOT AUTHORIZED below -10°C or above 50°C.



RWY25	1.0	2.0	3.0	4.0	PO008	KT	090	110	130	150	170	190
ALT	3060	3380	3700	4020	4350	FPM	500	600	700	800	NA	NA
(HGT)	360	680	1000	1320	1650	FAF-MAPT				NA		

STRAIGHT-IN	CAT	A	B	C	D	E
LNAV/VNAV	DA / (OCH)	3001' / (301')				
	ALS/NO ALS/ RVR ALS (m)	NIL / 1600 / NIL			NIL / 1400 / NIL	
LNAV	MDA / (OCH)	3060' / (360')				
	ALS/NO ALS/RVR ALS (m)	NIL / 1600 / NIL			NIL / 1600 / NIL	
CIRCLING	MDA / (OCH)	NA				
	VIS (m)	NA				

SUP N112/19 20 JUN 19 TIL 18 JUL 19

DEPARTAMENTO DE CONTROLE DO ESPAÇO AÉREO

SBPO_IAC_00B 1/1
IAC RNAV(GNSS) RWY 25

CHANGES: NEW CHART.

INTENCIONALMENTE EM BRANCO
INTENTIONALLY LEFT BLANK