

**INSTRUMENT APPROACH CHART (IAC)**

**TAUBATÉ / Base de Aviação de Taubaté, MIL (SBTA)**

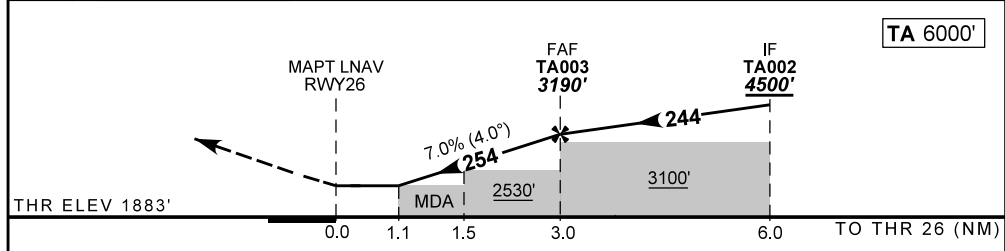
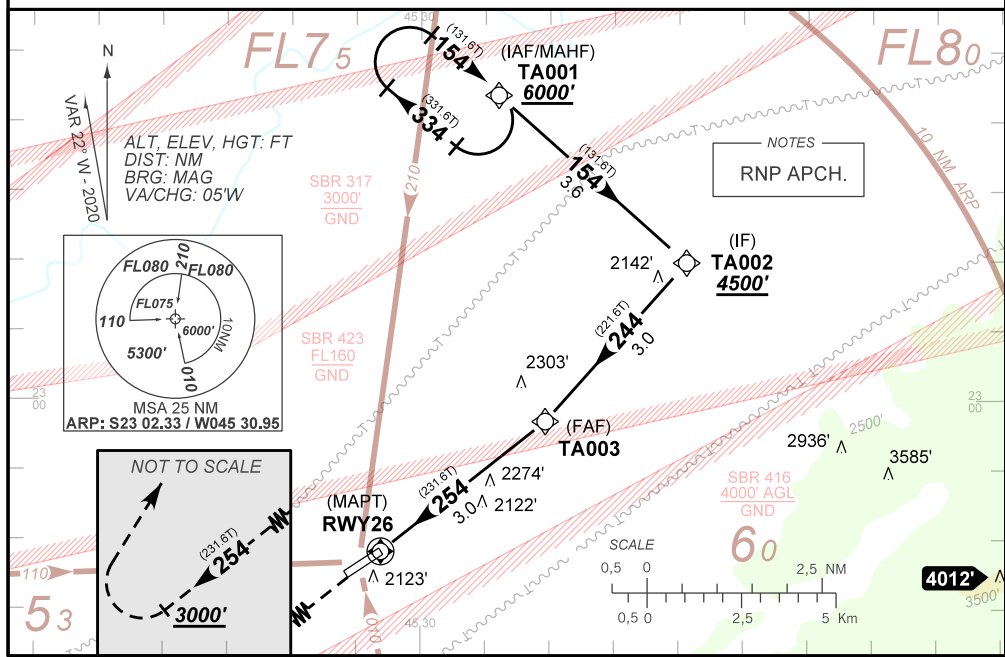
**AD ELEV: 1902'**

**RNAV(GNSS) RWY 26**

<b>ATIS</b> NIL	<b>APP</b> NIL	<b>TWR TAUBATÉ</b> 119.90 121.50	<b>GNDC TAUBATÉ</b> 121.70
<b>N/A</b>	<b>FINAL CRS</b> 254°	<b>FAF:</b> 3190'	<b>LNAV</b> MDA / (OCH): 2370' / (490')

APCH Perdida: Subir para **6000'**. Manter rumo **254** até **3000'**. Após, curvar à DIREITA direto TA001 para espera.  
 Missed APCH: Climb to **6000'**. Maintain course **254** until **3000'**. After, turn RIGHT direct to TA001 for holding.

RMK: NIL.



RWY 26	1.1	1.5	2.0	TA003		KT	060	070	080	090
ALT	2370	2556	2768	3190		FPM	430	500	600	640
(HGT)	490	673	885	1307		FAF-MAPT			NA	

STRAIGHT-IN	<b>CAT</b>	<b>H</b>
	MDA / (OCH)	
LNAV	ALS/NO ALS/ RVR ALS (m)	NIL / 800 / NIL
CIRCLING	MDA / (OCH)	NA
	VIS (m)	

CHANGES: NEW CHART.