

**INSTRUMENT APPROACH  
CHART (IAC)**

**SANTA MARIA / Santa Maria (SBSM)**

**AD ELEV: 289'**

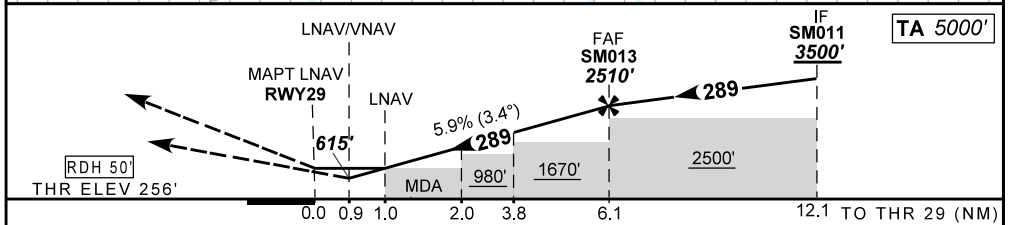
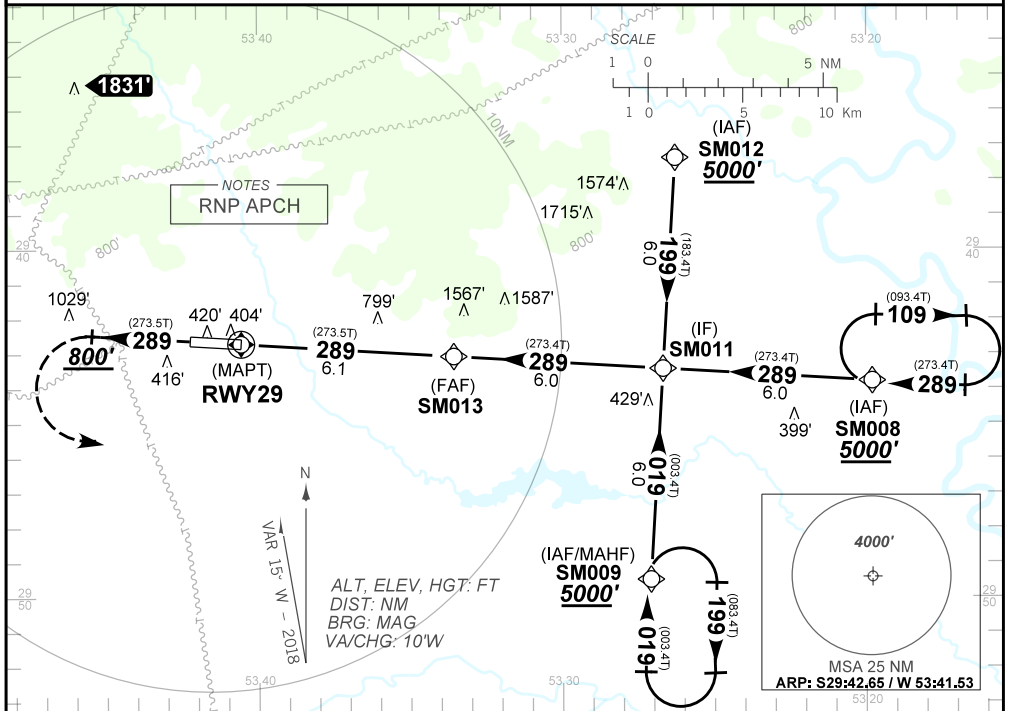
**RNAV (GNSS) RWY 29**

<b>ATIS</b> 127.75	<b>APP SANTA MARIA</b> 119.35 121.35 121.50	<b>TWR SANTA MARIA</b> 118.30 118.85 121.50	<b>GNDC</b> NIL
-----------------------	--	--	--------------------

<b>N/A</b>	<b>FINAL CRS</b> 289°	<b>FAF</b> 2510'	<b>LNAV/VNAV</b> DA / (OCH): 615' / (360')	<b>LNAV</b> MDA / (OCH): 650' / (400')
------------	--------------------------	---------------------	---	---

APCH Perdida: Subir para **5000'**. Manter rumo **289** até **800'**. Curvar à ESQUERDA direto SM009 para espera.  
Missed APCH: Climb to **5000'**. Maintain course **289** up to **800'**. Turn LEFT direct SM009 for holding.

RMK: 1) Para sistemas não compensados, LNAV/VNAV não autorizado abaixo de -20°C.  
1) For uncompensated systems, LNAV/VNAV not authorized below -20°C.



RWY29	1,0	2,0	3,0	4,0	5,0	SM013	KT	090	110	130	150	170	190
ALT	650	1027	1387	1749	2110	2510	FPM	500	600	700	800	900	1000
(HGT)	394	771	1131	1493	1854	2254	FAF-MAPT	NA					

STRAIGHT-IN	CAT	A	B	C	D	E
		NA				
LNAV / VNAV	DA / (OCH)	615' / (360')				NA
	ALS/NO ALS/ RVR ALS (m)	NIL / 1600 / NIL				
LNAV	MDA / (OCH)	650' / (400')				
	ALS/NO ALS/ RVR ALS (m)	NIL / 1600 / NIL		NIL / 1800 / NIL		
CIRCLING	MDA / (OCH)	NA				
	VIS (m)	NA				

CHANGES: NEW CHART.