

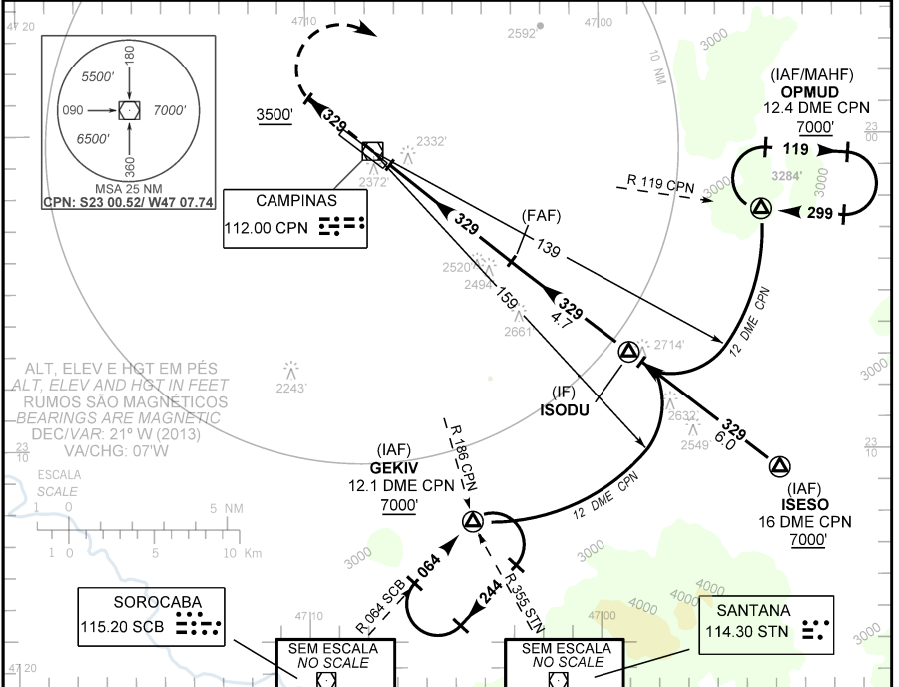
CARTA DE APROXIMAÇÃO
 POR INSTRUMENTOS (IAC)
 INSTRUMENT APPROACH CHART (IAC)

CAMPINAS / Viracopos, INTL (SBKP)

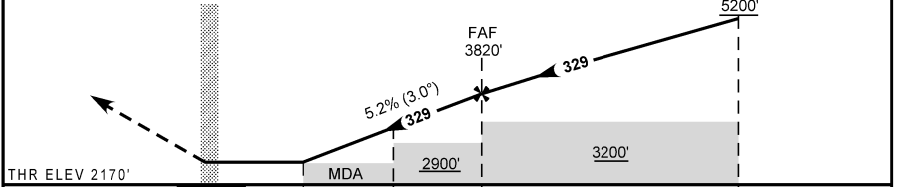
VOR RWY 33

AD ELEV: 2170'	ATIS 127.825	APP SÃO PAULO 119.25 121.40 132.10 120.25 135.75 120.05 119.80 129.00 119.60 134.65 121.50	TWR CAMPINAS 118.25 121.50	GNDCL CAMPINAS 121.90
----------------	-----------------	--	-------------------------------	--------------------------

RMK: IAS MAX 200Kt na aproximação final.
 Aproximação Perdida: 1) Subir para 7000', gradiente MNM 5% até 3500'.
 Manter RDL 329 CPN até 3500'. Curvar à direita, RDL 119 CPN para espera em OPMUD. 2) IAS MAX 200Kt.
 RMK: MAX IAS 200Kt on final approach.
 Missed Approach: Climb to 7000', MNM gradient 5% until 3500'. Maintain 329 CPN RDL until 3500'. Turn right, 119 CPN RDL for holding at OPMUD. 2) MAX IAS 200Kt.



MAPT CPN	IF ISODU	TA 8000'
----------	----------	----------



THR ELEV 2170'	0.0	1.3	2.5	5.0	9.7	TO THR 33 (NM)
	0.6	1.9	3.1	5.6	10.3	TO CPN (DME)

RWY33	1.3	2.0	3.0	4.0	FAF	KT	90	110	130	150	170	190
ALT	2620	2857	3175	3494	3820	FPM	500	600	700	800	900	1000
(HGT)	450	687	1005	1324	1650	FAF-MAPT 5.6 NM	3.44	3.03	2.35	2.14	1.59	1.46

POUSO DIRETO STRAIGHT-IN	CAT	A	B	C	D	E
	MDA / OCH / TETO	2620 / 450 / 500				
VOR	ALS/NO ALS/RVR ALS(m)	NIL / 1600 / NIL			NIL / 2100 / NIL	
	VIS (m)					
CIRCULAR TO CIRCLE	MDA / OCH / TETO	NA				
	VIS (m)					

MODIFICAÇÕES / CHANGES: FREC.