

AD ELEV: 479'

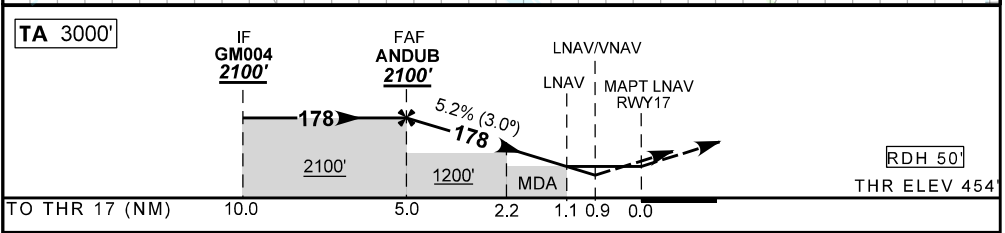
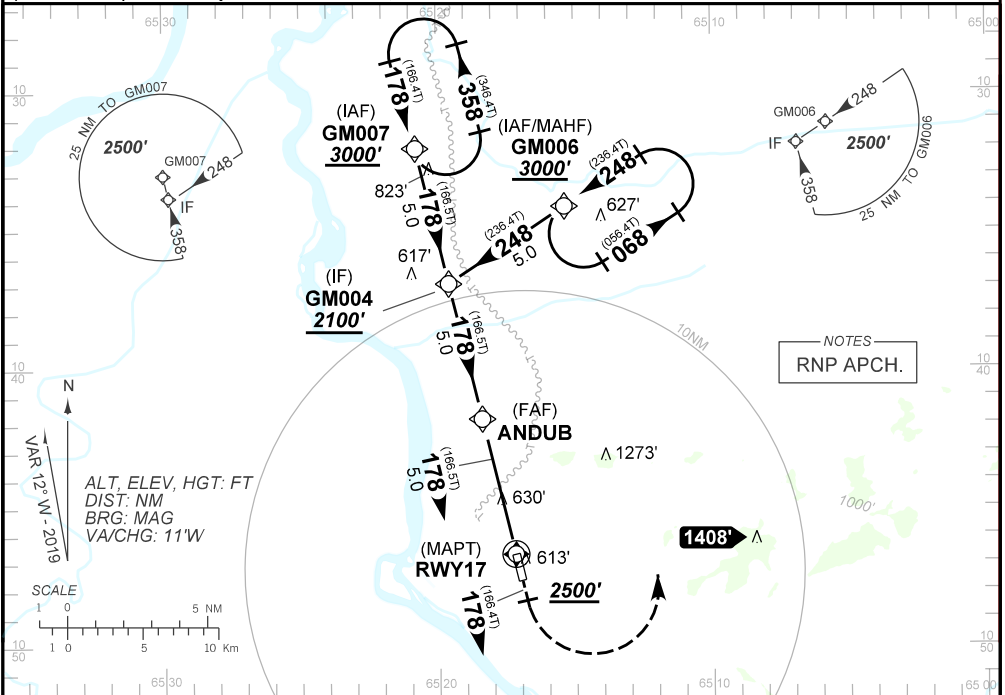
| | | | |
|-------------|-------------------|--|------------------------------------|
| ATIS NIL | APP NIL | AFIS GUAJARÁ-MIRIM 125.90 | GNDC NIL |
| N/A | FINAL CRS 178° | FAF 2100' | LNAV MDA / (OCH): 880' / (430') |
| | | LNAV/VNAV DA / (OCH): 774' / (320') | |

APCH Perdida: Subir para **3000'**. Manter rumo **178** até cruzar **2500'**. Curvar à ESQUERDA direto GM006 para espera.

Missed APCH: Climb to **3000'**. Maintain course **178** until passing **2500'**. Turn LEFT direct to GM006 for holding.

RMK: 1) Para sistemas não compensados Baro-VNAV, LNAV/VNAV NÃO AUTORIZADO abaixo de 0°C ou acima de 50°C.

1) For uncompensated systems Baro-VNAV, LNAV/VNAV NOT AUTHORIZED below 0°C or above 50°C.



| | | | | | | | | | | | | |
|-------|------|------|------|-----|-------|----------|-----|-----|-----|-----|-----|-----|
| ANDUB | 4.0 | 3.0 | 2.2 | 1.1 | RWY17 | KT | 090 | 110 | 130 | 150 | 170 | 190 |
| 2100 | 1778 | 1460 | 1200 | 880 | ALT | FPM | 500 | 600 | 700 | 800 | 170 | NA |
| 1646 | 1324 | 1006 | 746 | 426 | (HGT) | FAF-MAPT | | | | | | NA |

| | | | | | | |
|-------------|-------------------------|------------------|---|------------------|---|---|
| STRAIGHT-IN | CAT | A | B | C | D | E |
| LNAV/VNAV | DA / (OCH) | 774' / (320') | | | | |
| | ALS/NO ALS/ RVR ALS (m) | NIL / 1400 / NIL | | | | |
| LNAV | MDA / (OCH) | 880' / (430') | | | | |
| | ALS/NO ALS/ RVR ALS (m) | NIL / 1600 / NIL | | NIL / 2000 / NIL | | |
| CIRCLING | MDA / (OCH) | NA | | | | |
| | VIS (m) | | | | | |

CHANGES: DEC. TAA.