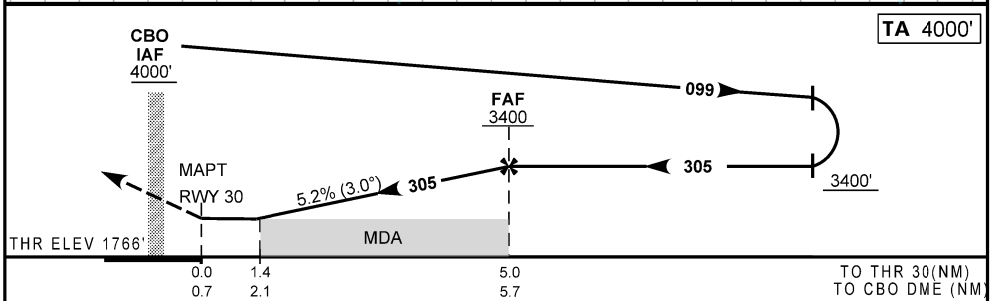
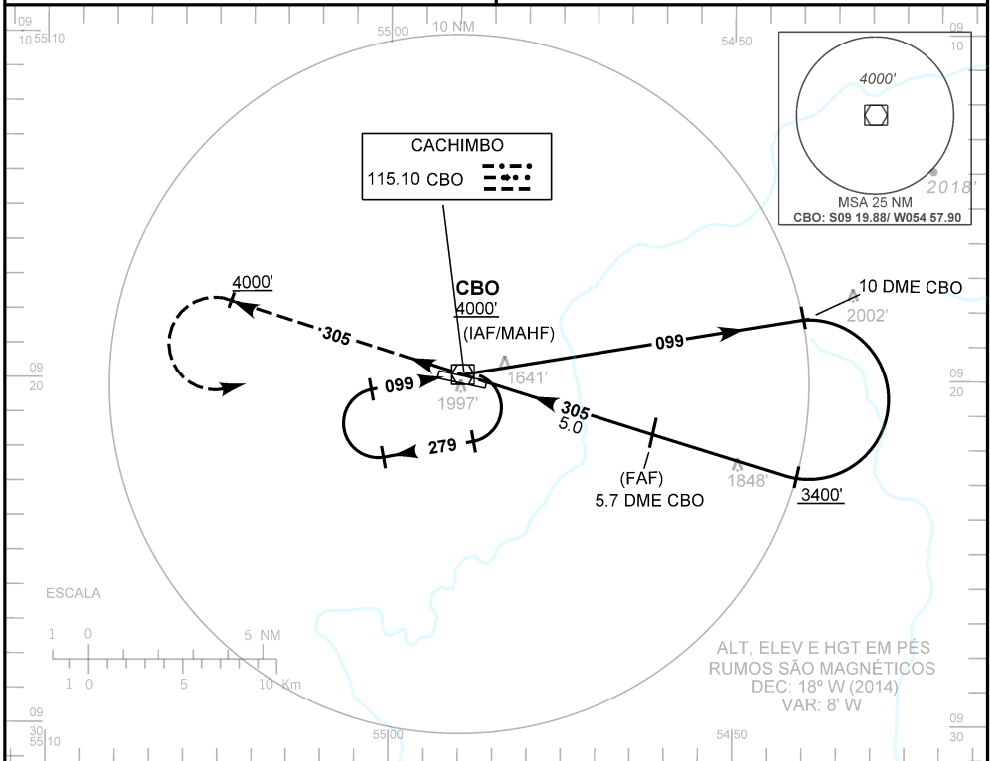


AD ELEV: 1777'	ATIS NIL	APP NIL	AFIS CACHIMBO 125.90	TWR NIL
----------------	-------------	------------	-------------------------	------------

RMK: NIL.

Aproximação Perdida: Subir para 4000' na RDL 305 CBO. Ao atingir 4000', curvar à esquerda para espera no VOR CBO.



RWY30	1.4	2.0	3.0	4.0	FAF		KT	090	110	130	150	170	190
ALT	2250	2440	2760	3080	3400		FPM	500	600	700	800	900	1050
(HGT)	484	674	994	1314	1634		FAF-MAPT NM	NIL					

POUSO DIRETO STRAIGHT-IN	CAT	A	B	C	D	E
	MDA / OCH / TETO	2250/490/500				
VOR	ALS/NO ALS/ RVR ALS (m)	NIL / 1600 / NIL		NIL / 2300 / NIL		

CIRCULAR	MDA / OCH / TETO	NA
	VIS (m)	

CHANGES: ELEV. IDENT.