

**INSTRUMENT APPROACH
CHART (IAC)**

**SALVADOR / Deputado Luís Eduardo Magalhães, INTL (SBSV)
RNAV(GNSS) Y RWY 09**

AD ELEV: 66'

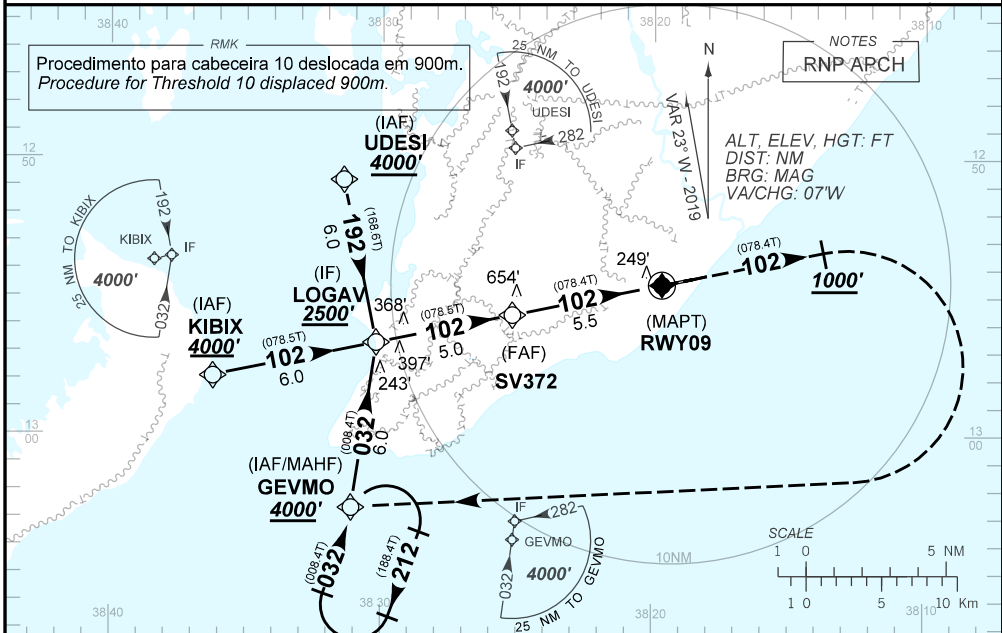
THR 10 DISPLACED 900m

ATIS 127.75	APP SALVADOR 119.35 119.80 120.80 129.45	TWR SALVADOR 118.30 118.60 118.95 121.10 121.50	GNDC SALVADOR 121.90
-----------------------	--	---	--------------------------------

N/A	FINAL CRS 102°	LNAV/VNAV DA / (OCH): 429' / (400')	LNAV MDA / (OCH): 520' / (490')
-----	--------------------------	---	---

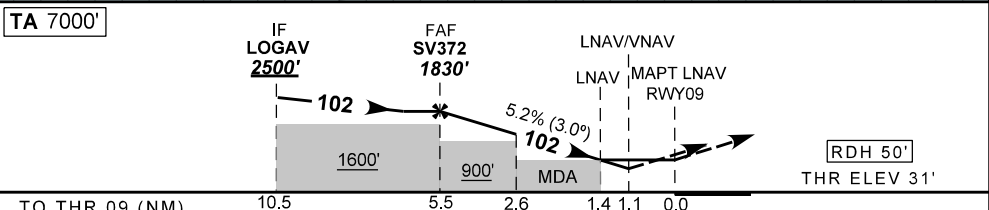
APCH Perdida: 1) Subir para **4000'**. Manter rumo **102°** até cruzar **1000'**. Então, curvar à DIREITA direto GEVMO para espera
Missed APCH: 1) Climb to **4000'**. Maintain course **102°** until passing **1000'**. Then, turn RIGHT direct GEVMO for holding.

RMK: 1) Para sistemas não compensados Baro-VNAV, LNAV/VNAV NÃO AUTORIZADO abaixo de 0°C ou acima de 46°C.
1) For uncompensated systems Baro-VNAV, LNAV/VNAV NOT AUTHORIZED below 0°C or above 46°C.



Procedimento para cabeceira 10 deslocada em 900m.
Procedure for Threshold 10 displaced 900m.

ALT, ELEV, HGT: FT
DIST: NM
BRG: MAG
VA/CHG: 07°W



SV372	5.0	4.0	3.0	2.6	1.4	RWY09	KT	090	110	130	150	170	190
1830	1673	1355	1036	909	520	ALT	FPM	500	600	700	800	900	NA
1799	1642	1324	1005	878	490	(HGT)	FAF-MAPT	NA					

STRAIGHT-IN	CAT	A	B	C	D	E
LNAV/VNAV	DA / (OCH)	429' / (400')				
	ALS/NO ALS/ RVR ALS (m)	NIL / 1600 / NIL		NIL / 1800 / NIL		
LNAV	MDA / (OCH)	520' / (490')				
	ALS/NO ALS/RVR ALS (m)	NIL / 1600 / NIL		NIL / 2300 / NIL		
CIRCLING	MDA / (OCH)	NA				
	VIS (m)	NA				

CHANGES: CARTA NOVA

INTENCIONALMENTE EM BRANCO
INTENTIONALLY LEFT BLANK