

**INSTRUMENT APPROACH
CHART (IAC)**

FOZ DO IGUAÇU / Cataratas, INTL (SBFI)

AD ELEV: 787'

RNAV (GNSS) RWY 32

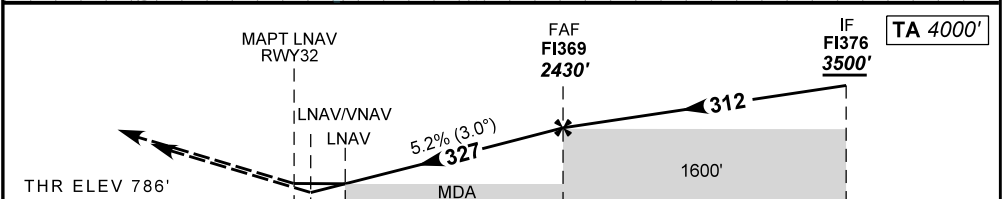
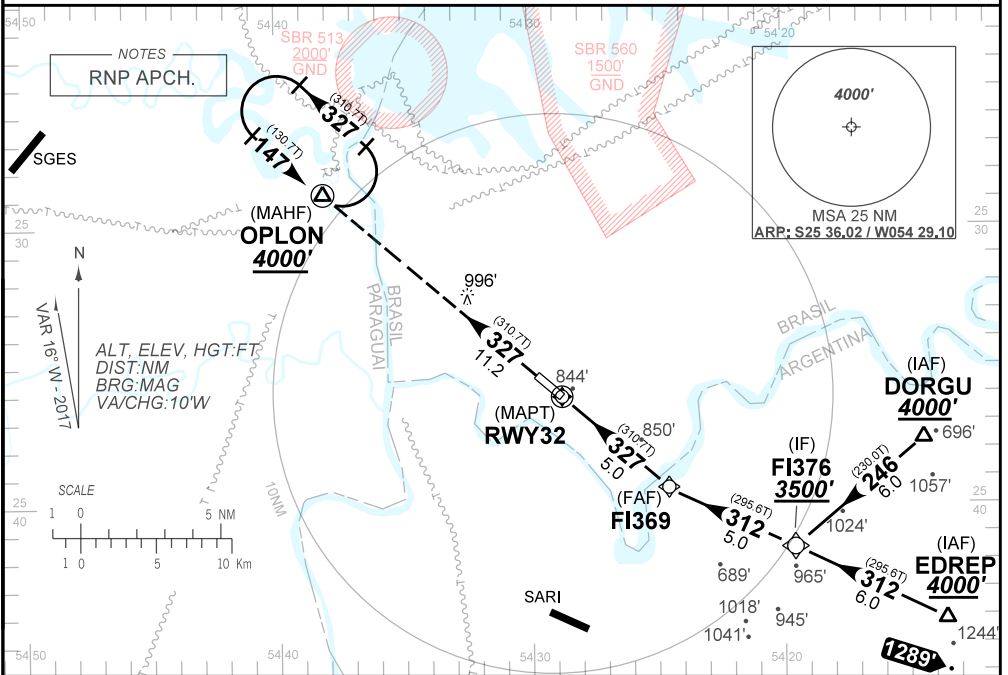
D-ATIS	APP FOZ 120.30 119.15 121.50			TWR FOZ 118.80	GNDC NIL
N/A	FINAL CRS 327°	FAF 2430'	LNAV/VNAV DA / (OCH): 1037' (260')	LNAV MDA / (OCH): 1130' (350')	

APCH Perdida: Subir para **4000'** no rumo **327'** para espera em OPLON.

Missed APCH: Climb to **4000'** on course **327'** for holding over OPLON.

RMK: 1) Para sistemas BARO-VNAV não compensados, procedimento LNAV/VNAV não autorizado abaixo de -10°C.

1) For uncompensated systems BARO-VNAV, LNAV/VNAV procedure not authorized below -10°C.



THR ELEV 786'	MAPT LNAV RWY32		FAF FI369 2430'		IF FI376 3500'	TA 4000'	
TO THR 32 (NM)	0.0	0.6	0.9	5.0	10.0		
RWY32	0.6	0.9	2.0	3.0	4.0	FI369	
ALT	1037	1130	1632	1899	2165	2431	
(HGT)	251	343	846	1112	1378	1644	
	KT	090	110	130	150	170	190
	FPM	500	600	700	800	900	NA
	FAF-MAPT 5NM	NA					

STRAIGHT-IN	CAT	A	B	C	D	E
LNAV/VNAV	DA / (OCH) / TETO	1037' / (260') / 300'				NA
	ALS/NO ALS/ RVR ALS (m)	NIL / 1300 / NIL				
LNAV	MDA / (OCH) / TETO	1130' / (350') / 400'				
	ALS/NO ALS/ RVR ALS (m)	NIL / 1600 / NIL				
CIRCLING	MDA / (OCH) / TETO	NA				
	VIS (m)	NA				

CHANGES: F. LAYOUT: PROC.