

**INSTRUMENT APPROACH
CHART (IAC)**

**SAO PEDRO DA ALDEIA / São Pedro da Aldeia, MIL (SBES)
VOR Y RWY 07**

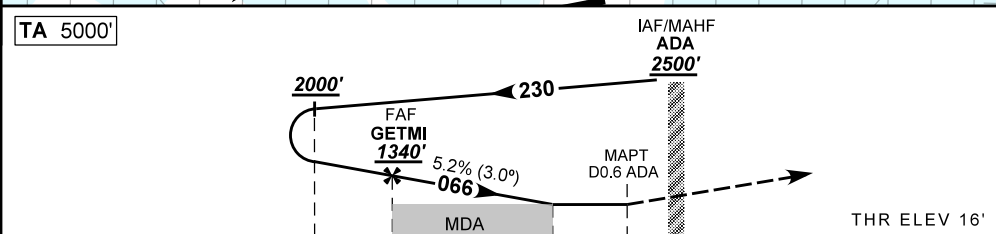
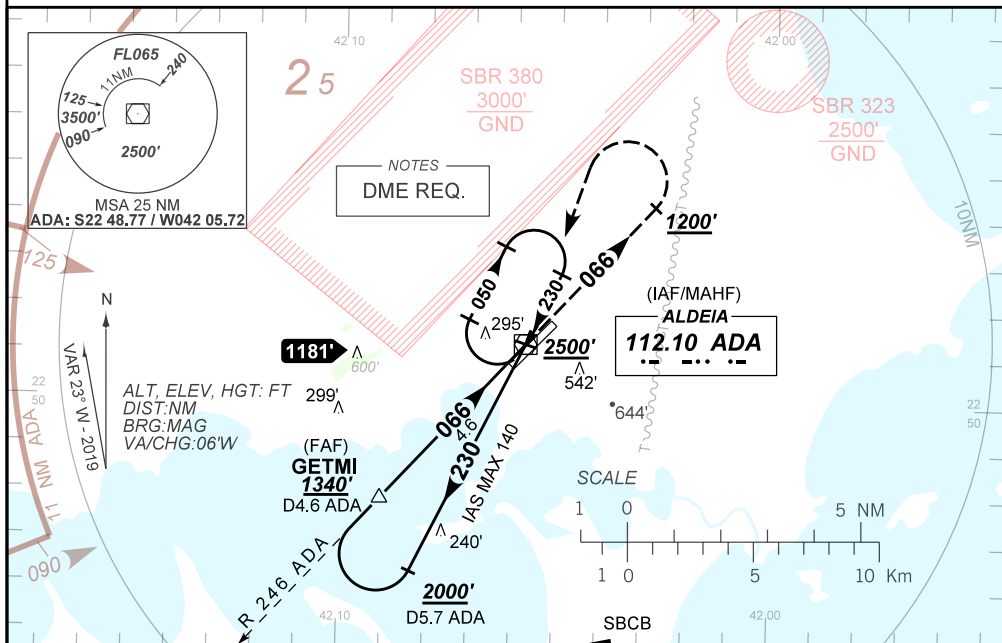
AD ELEV: 61'

(CAT A, B)

ATIS NIL	APP ALDEIA 119.45 120.30		TWR ALDEIA 118.30 122.80 (MIL) 121.50	GNDC ALDEIA 121.90
VOR/DME ADA 112.10 MHz	FINAL CRS 066°	FAF 1340'	N/A	VOR MDA / (OCH): 470' / (460')

APCH Perdida: Subir para **2500'**. Manter rumo **066°** até **1200'**, IAS MAX 230KT. Então, curvar à ESQUERDA direto VOR Aldeia para espera.

Missed APCH: Climb to **2500'**. Maintain course **066°** until passing **1200'**, IAS MAX 230KT. Then, turn LEFT direct to Aldeia VOR for holding.



TO THR 07 (NM)	5.1	4.0	1.3	0.0
TO DME ADA (NM)	5.7	4.6	1.9	0.6

	GETMI	3.0	2.0	1.3	RWY07	KT	090	110	130	150	170	190
	1340	1021	703	470	ALT	FPM	500	600	700		NA	NA
	1324	1005	687	460	(HGT)	FAF-MAPT	NA					

STRAIGHT-IN	CAT	A	B	C	D	E
	MDA / (OCH)	470' / (460')				
VOR	ALS/NO ALS/ RVR ALS (m)	NIL / 1600 / NIL				
	MDA / (OCH)	NA				
CIRCLING	MDA / (OCH)	NA				
	VIS (m)	NA				

CHANGES: NEW CHART.