

CARTA DE APROXIMAÇÃO
POR INSTRUMENTOS (IAC)

SALVADOR / Deputado Luís Eduardo Magalhães, INTL (SBSV)

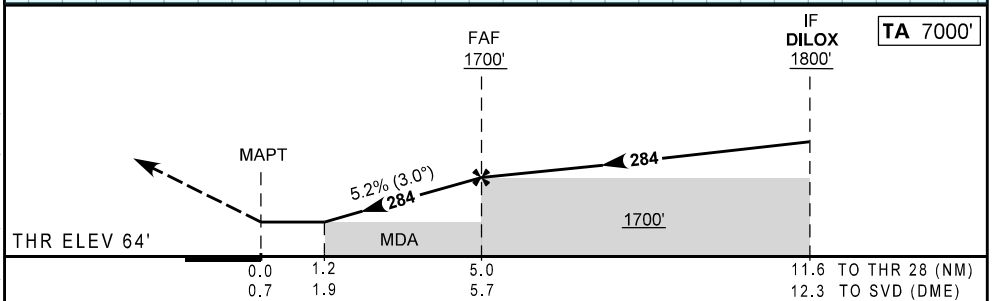
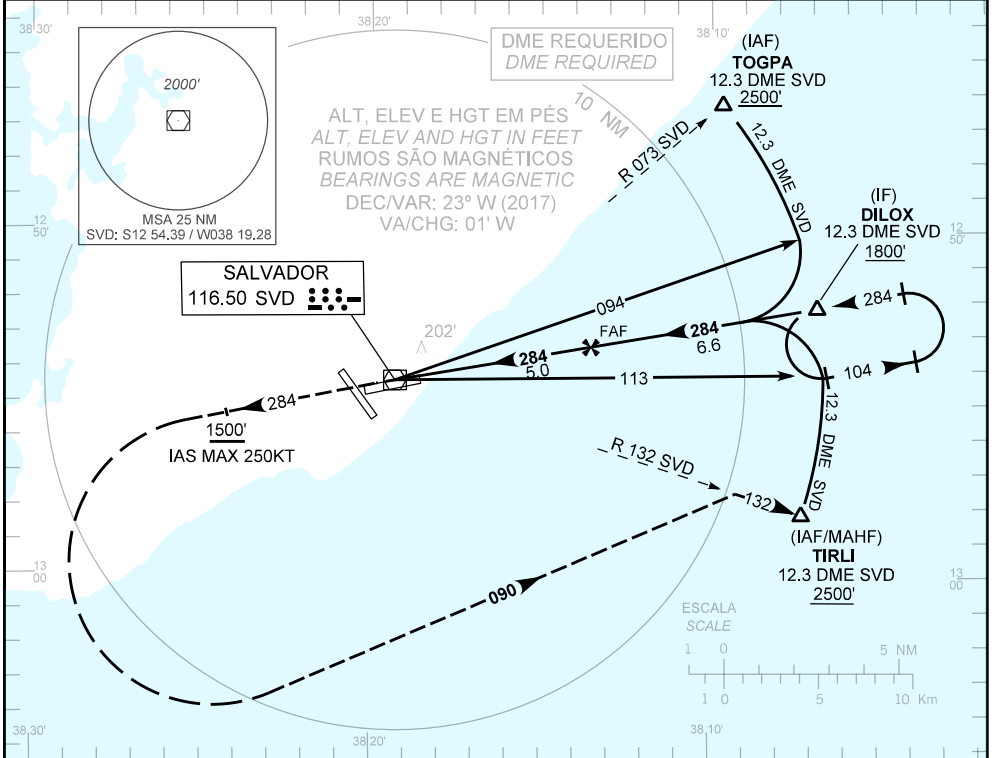
INSTRUMENT APPROACH CHART (IAC)

VOR Z RWY 28

AD ELEV: 66'	ATIS 127.75	APP SALVADOR 119.35 119.80 120.80 129.45	TWR SALVADOR 118.30 118.60 118.95 121.10 121.50	GNDC SALVADOR 121.90
--------------	----------------	---	---	-------------------------

RMK: D-ATIS AVBL via DATALINK.

Aproximação Perdida: Subir para 2500'. Manter RDL 284 SVD até cruzar 1500'. Então, curvar à esquerda proa 090 para interceptar a RDL 132 SVD e ingressar no arco DME 12.3 SVD para espera em DILOX.
Missed Approach: Climb to 2500'. Maintain 284 SVD RDL until passing 1500'. Then, turn left heading 090 to intercept 132 SVD RDL to join 12.3 DME SVD arc for holding at DILOX.



RWY28	1.2	2.0	3.0	4.0	FAF		KT	090	110	130	150	170	190
ALT	500	753	1071	1390	1700		FPM	500	600	700	800	900	1050
(HGT)	440	687	1005	1324	1634		FAF-MAPT	NIL					

POUZO DIRETO STRAIGHT-IN	CAT	A	B	C	D	E
	MDA / OCH / TETO	500 / 440 / 500				
VOR/DME	ALS/NO ALS/ RVR ALS (m)	NIL / 1600 / NIL		NIL / 2000 / NIL		
CIRCULAR TO CIRCLE	MDA / OCH / TETO	NA				
	VIS (m)	NA				

MODIFICAÇÕES / CHANGES: REG. IDENT. INFO. LAYOUT. MINM. APCH. PROC. RMK.