

**INSTRUMENT APPROACH
CHART (IAC)**

BAGÉ / Comandante Gustavo Kraemer (SBBG)

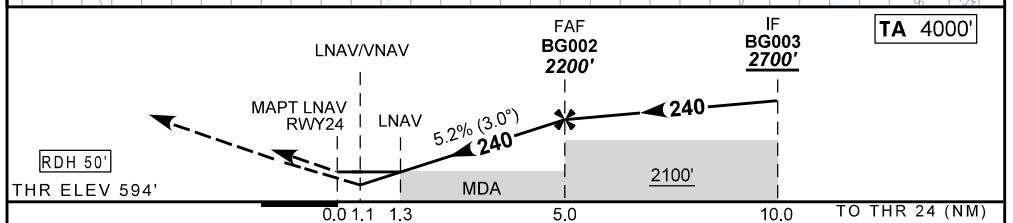
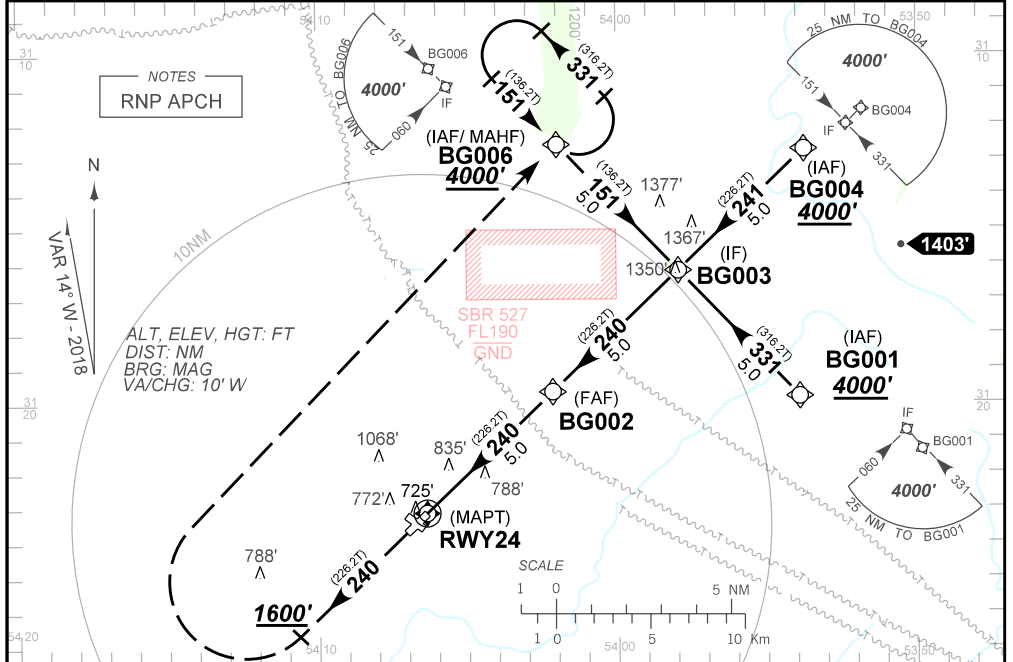
AD ELEV: 611'

RNAV(GNSS) RWY 24

ATIS NIL	APP NIL	AFIS BAGÉ 125.85		GNDC NIL
N/A	FINAL CRS 240°	FAF 2200'	LNAV/VNAV DA / (OCH): 990' (400')	LNAV MDA / (OCH): 1040' (450')

APCH Perdida: Subir para **4000'** no rumo 240. Ao passar **1600'**, curvar à DIREITA direto BG006 para espera.
Missed APCH: Climb to **4000'** on course 240. On passing **1600'**, turn RIGHT direct to BG006 for holding.

RMK: 1) Para sistemas não compensados Baro-VNAV, LNAV/VNAV NÃO AUTORIZADO abaixo de -10 °C.
2) Procedimento não utilizável quando SBR 527 estiver ativado.
1) For uncompensated systems Baro-VNAV, LNAV/VNAV NOT AUTHORIZED below -10 °C. 2) Procedure not usable when SBR 527 is activated.



RWY24	1.3	2.0	3.0	4.0	FAF		KT	090	110	130	150	170	190
ALT	1040	1281	1599	1918	2200		FPM	500	600	700	800	NA	NA
(HGT)	450	687	1005	1324	1606		FAF-MAPT	NA					

STRAIGHT-IN	CAT	A	B	C	D	E
	DA / (OCH)	990' / (400')				NA
LNAV/VNAV	ALS/NO ALS/ RVR ALS (m)	NIL / 1800 / NIL				
LNAV	MDA / (OCH)	1040' / (450')				
	ALS/NO ALS/RVR ALS (m)	NIL / 1800 / NIL			NIL / 2100 / NIL	
CIRCLING	MDA / (OCH)	NA				
	VIS (m)					

CHANGES: NEW CHART