

**INSTRUMENT APPROACH CHART (IAC)**

**RIO DE JANEIRO / Galeão - Antônio Carlos Jobim, INTL (SBGL)**

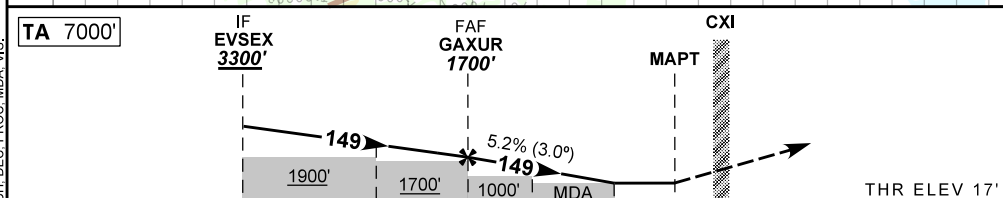
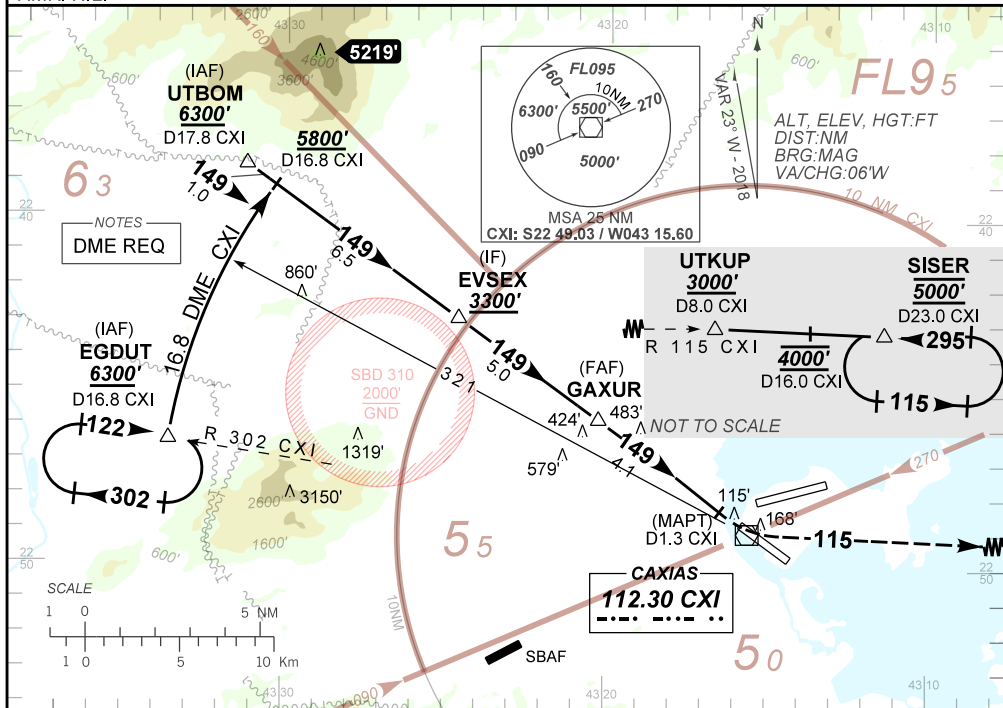
**AD ELEV: 28'**

**VOR Y RWY 15**

D-ATIS <b>127.60</b>	APP RIO <b>129.80 125.95 128.90 119.35 121.50</b>			TWR GALEÃO <b>118.00 118.20 121.50</b>	GNDC GALEÃO <b>121.65 128.35</b>
VOR CXI <b>112.30 MHZ</b>	FINAL CRS <b>149°</b>	FAF <b>1700'</b>	N/A		VOR MDA / (OCH): <b>450' (440')</b>

APCH Perdida: Subir para **5000'**, gradiente MNM 5%. Curvar à ESQUERDA RDL 115 CXI até UTKUP. Após, manter RDL 115 CXI até SISER para espera.  
 Missed APCH: Climb to **5000'**, MNM gradient 5%. Turn LEFT 115 CXI RDL up to UTKUP. Then, maintain 115 CXI RDL up to SISER for holding.

RMK: NIL.



TO THR 15 (DME)	10.0	8.0	5.1	3.0	1.2	1.0	0.0
TO CXI (DME)	10.3	8.3	5.4	3.3	1.4	1.3	0.3
	GAXUR	4.0	3.0	2.0	1.2	RWY15	
		1700	1350	1030	730	450	ALT
		1683	1333	1013	713	433	(HGT)
	KT	090	110	130	150	170	190
	FPM	500	600	700	800	900	1000
	FAF-MAPT	3:22	2:45	2:20	2:10	1:47	1:36

STRAIGHT-IN	CAT	A	B	C	D	E
	MDA / (OCH)	450' / (440')				
VOR/DME	ALS/NO ALS/RVR/ALS (m)	800 / 1600 / 700			1500 / 1200 / 700	
	MDA / (OCH)	NA				
CIRCLING	MDA / (OCH)	NA				
	VIS (m)	NA				

CHANGES: EAC, LAYOUT, MISSED APPROACH, DEC. PROC, MDA, VIS.