

**INSTRUMENT APPROACH CHART (IAC)**

**PORTO ALEGRE / Salgado Filho, INTL (SBPA)**

**AD ELEV: 12'**

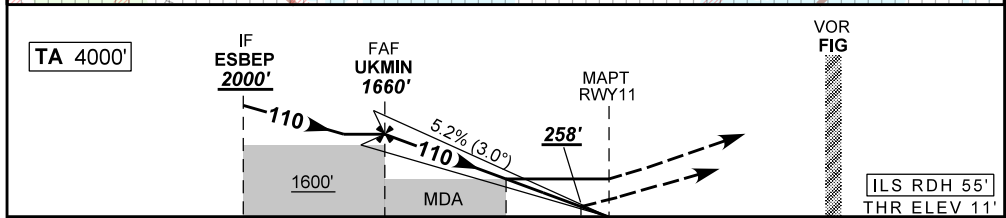
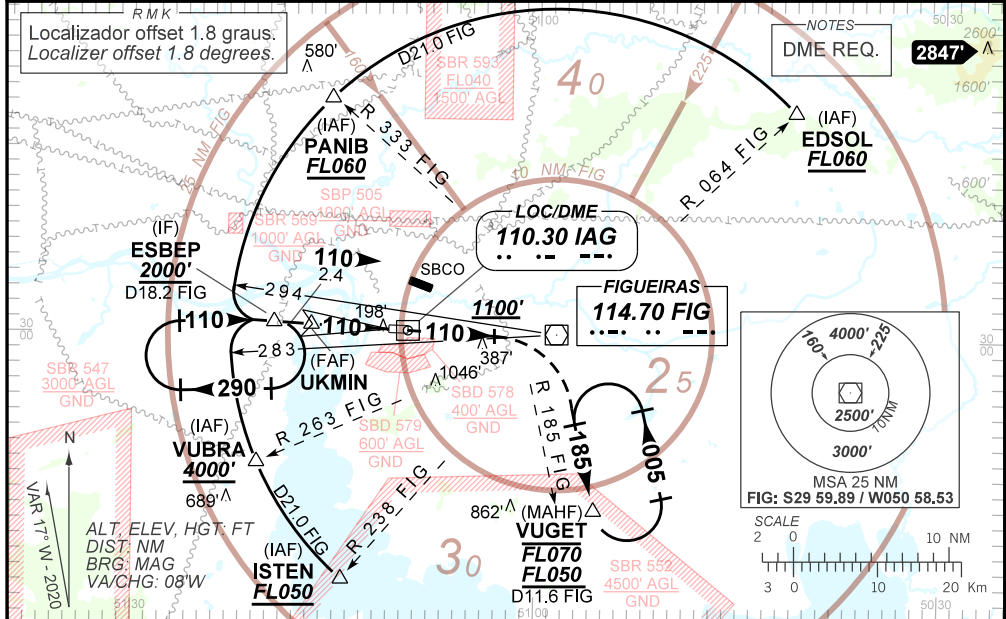
**ILS X or LOC X RWY 11**

D-ATIS <b>132.35</b>	APP PALEGRE <b>119.00 120.10 120.55 128.90</b>		TWR PALEGRE <b>118.10</b>	GNDX PALEGRE <b>121.90</b>
-------------------------	---	--	------------------------------	-------------------------------

LOC IAG <b>110.30 MHz</b>	FINAL CRS <b>110°</b>	FAF: <b>1660'</b>	CAT I DA / (OCH): <b>258' / (247')</b>	LOC MDA / (OCH): <b>540' / (530')</b>
------------------------------	--------------------------	----------------------	---	--

APCH Perdida: Subir para **FL050**. Manter proa **110** até **1100'**. Após, curvar à DIREITA para interceptar RDL **185** VOR FIG até VUGET para espera.  
 Missed APCH: Climb to **FL050**. Maintain heading **110** until **1100'**. After, turn **RIGHT** to intercept **185** RDL FIG VOR to VUGET for holding.

RMK: (\*)VIS RVR ALS 550m para APCH utilizando Diretor de Voo, Piloto Automático ou Head-Up Display (HUD).  
 (\*)VIS RVR ALS 550m for APCH using a Flight Director, Autopilot or Head-Up Display (HUD).



TO THR 11 (NM)	7.4	5.0	1.5	0.6	0.0
TO IAG (DME)	8.6	6.2	2.7	1.8	1.2

UKMIN	4.0	3.0	2.0	1.5	0.6	RWY11
1660	1342	1023	705	540	258	ALT
1649	1331	1012	694	530	247	(HGT)

STRAIGHT-IN	CAT	A	B	C	D	NA
	DA / (OCH)	258' / (247')				
CAT I	ALS/NO ALS/ RVR ALS (m)	800 / 1300 / 700*				NA
	MDA / (OCH)	540' / (530')				
LOC	ALS/NO ALS/ RVR ALS (m)	800 / 1600 / NIL		1700 / 2400 / NIL		NA
	MDA / (OCH)	NA				
CIRCLING	MDA / (OCH)	NA				NA
	VIS (m)	NA				

CHANGES: NEW CHART.