

AD ELEV: 1342'

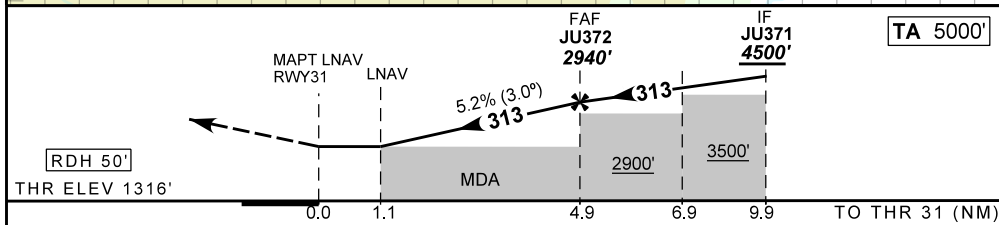
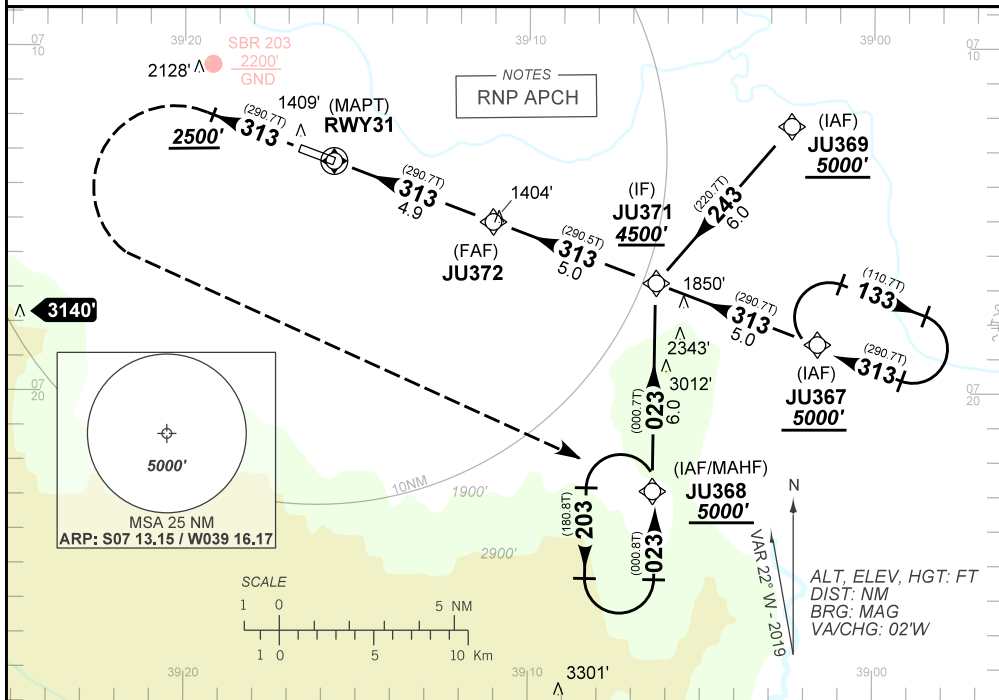
RNAV(GNSS) RWY 31

ATIS NIL	APP NIL	AFIS JUAZEIRO 131.75 121.50	GNDC NIL
N/A	FINAL CRS 313°	FAF 2940'	LNAV MDA / (OCH): 1730' / (420')

APCH Perdida: Subir para **5000'**. Manter o rumo **313°** até cruzar **2500'**. Após, curvar à ESQUERDA direto JU368 para espera.

Missed APCH: Climb to **5000'**. Maintain course **313°** until passing **2500'**. After, turn LEFT direct to JU368 for holding.

RMK: NIL



RWY31	1.1	2.0	3.0	4.0	JU372		KT	090	110	130	150	170	190
ALT	1730	2003	2321	2640	2940		FPM	500	600	700	800	900	NA
(HGT)	420	687	1005	1324	1624		FAF-MAPT	NA					

STRAIGHT-IN	CAT	A	B	C	D	E
	DA / (OCH)	NA				
LNAV/VNAV	ALS/NO ALS/ RVR ALS (m)	NA				
	MDA / (OCH)	1730' / (420')				
LNAV	ALS/NO ALS/RVR ALS (m)	NIL / 1600 / NIL		NIL / 1900 / NIL		
	MDA / (OCH)	NA				
CIRCLING	VIS (m)	NA				

CHANGES: LAYOUT, PROC.