

**INSTRUMENT APPROACH  
CHART (IAC)**

**SÃO PEDRO DA ALDEIA / São Pedro da Aldeia, MIL (SBES)**

**AD ELEV: 61'**

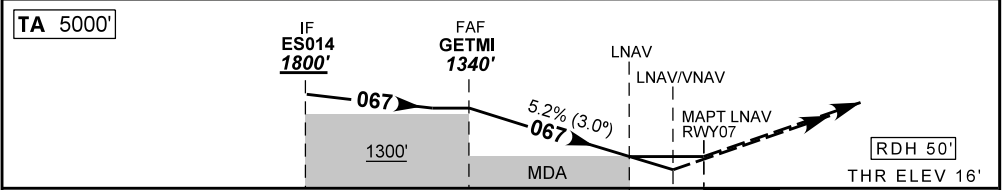
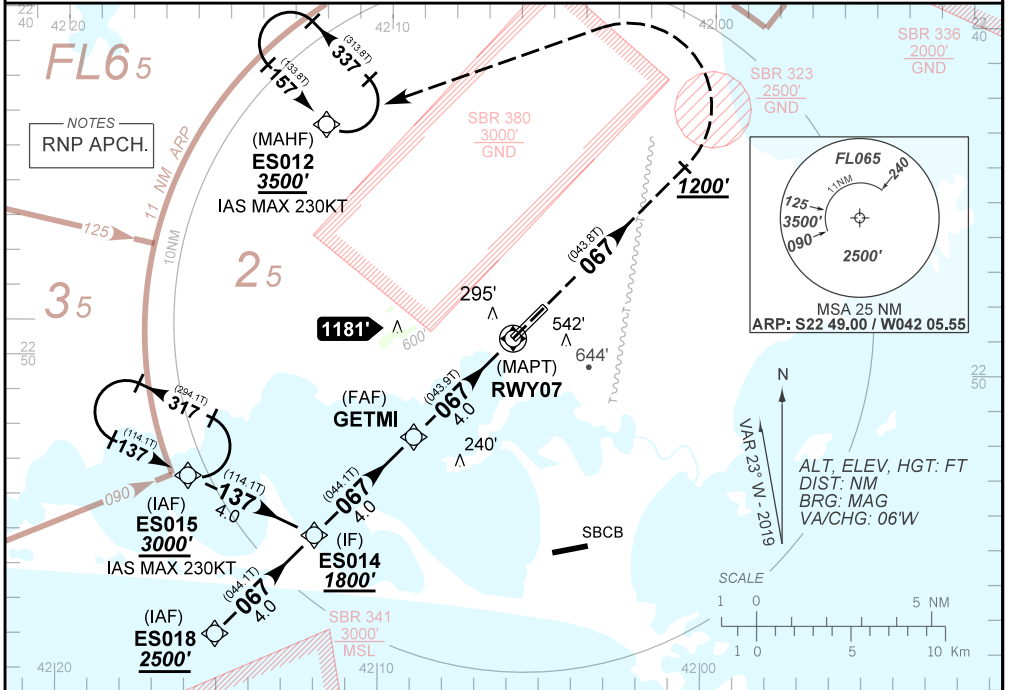
**RNAV(GNSS) Z RWY 07**

ATIS <b>NIL</b>	APP ALDEIA <b>119.45 120.30</b>	TWR ALDEIA <b>118.30 122.80 (MIL) 121.50</b>	GNDC ALDEIA <b>121.90</b>
--------------------	------------------------------------	---	------------------------------

N/A	FINAL CRS <b>067°</b>	FAF <b>1340'</b>	LNAV/VNAV DA / (OCH): <b>REFER TO MNM</b>	LNAV MDA / (OCH): <b>580' / (570')</b>
-----	--------------------------	---------------------	--	---

APCH Perdida: Subir para **3500'**. Manter rumo **067°** até **1200'**. Então, curvar à ESQUERDA direto ES012 para espera.  
Missed APCH: Climb to **3500'**. Maintain course **067°** until passing **1200'**. Then, turn LEFT direct to ES012 for holding.

RMK: 1) Para sistemas não compensados Baro-VNAV, LNAV/VNAV NÃO AUTORIZADO abaixo de 0°C ou acima de 48°C.  
1) For uncompensated systems Baro-VNAV, LNAV/VNAV NOT AUTHORIZED below 0°C or above 48°C.



TOTHR 07 (NM) 8.0 4.0 1.6 0.0

	GETMI	3.0	2.0	1.6	RWY07	KT	090	110	130	150	170	190
		1340	1021	703	580	FPM	500	600	700	800	950	1000
		1324	1005	687	570	FAF-MAPT	NA					

STRAIGHT-IN	CAT	A	B	C	D	E
	DA / (OCH)	435' / (419')	448' / (432')	459' / (443')	491' / (475')	
LNAV/VNAV	ALS/NO ALS/ RVR ALS (m)	NIL / 1600 / NIL		NIL / 2100 / NIL		NA
	MDA / (OCH)	580' / (570')				
LNAV	ALS/NO ALS/ RVR ALS (m)	NIL / 1600 / NIL		NIL / 2600 / NIL		
	MDA / (OCH)	NA				
CIRCLING	VIS (m)	NA				

CHANGES: NEW CHART.