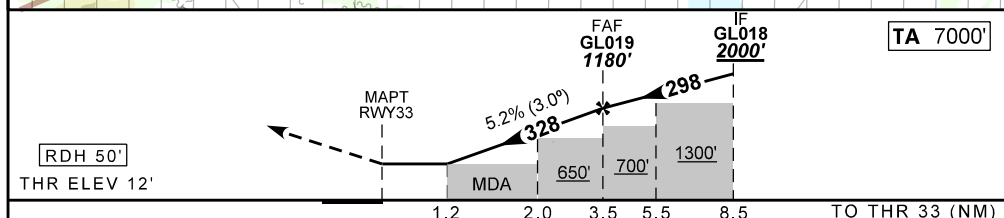
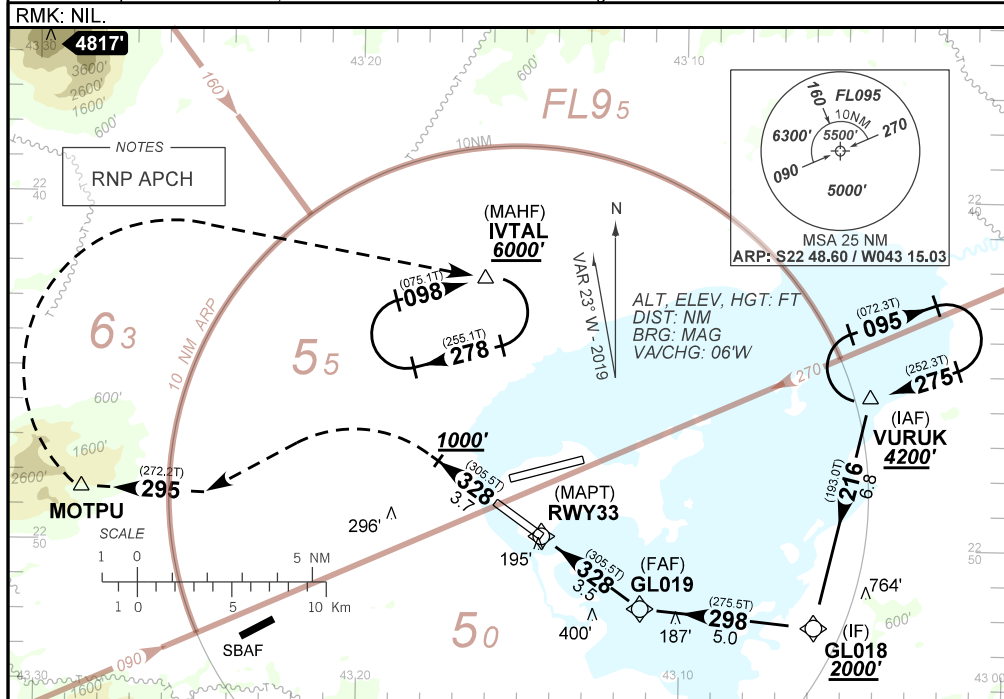


AD ELEV: 28'

RNAV(GNSS) W RWY 33

D-ATIS 127.60	APP RIO 126.20 133.30 129.80 125.95 128.90 119.35 134.40 121.25 121.50	TWR GALEÃO 118.00 118.20 121.50	GNDC GALEÃO 121.65 128.35
N/A	FINAL CRS 328°	FAF: 1180'	N/A
		MDA / (OCH):	460' / (450')

APCH Perdida: Subir para **6000'**. Gradiente MNM de 5%. Manter rumo **323** até **1000'**. Após, curvar à ESQUERDA para interceptar o curso **295** até MOTPU. Então, curvar à DIREITA direto IVTAL para espera.
Missed APCH: Climb to **6000'**. MNM climb gradient 5%. Maintain course **328** until **1000'**. LEFT turn to intercept course **295** up to MOTPU. Then, turn RIGHT direct to IVTAL for holding.



RWY33	1.2	2.0	3.0	GL019					
ALT	460	700	1018	1180					
(HGT)	448	688	1006	1168					

KT	090	110	130	150	170	190
FPM	500	600	700	800	900	1000
FAF-MAPT	NA					

STRAIGHT-IN	CAT	A	B	C	D	E
	MDA / (OCH)	460' / (450')				
LNAV	ALS/NO ALS/ RVR ALS (m)	NIL / 1600 / NIL			NIL / 2100 / NIL	
CIRCLING	MDA / (OCH)	NA				
	VIS (m)					

CHANGES: NEW CHART.