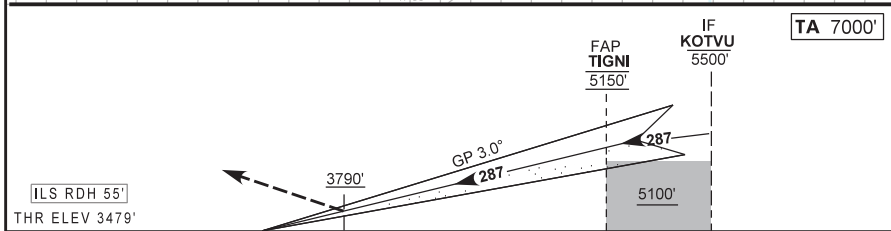
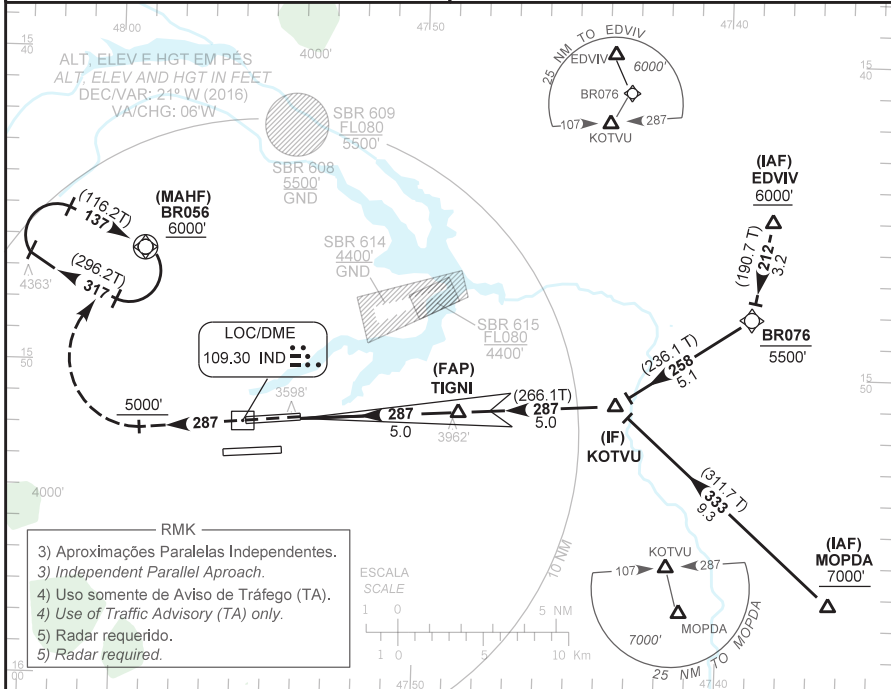


CARTA DE APROXIMAÇÃO  
POR INSTRUMENTOS (IAC)  
INSTRUMENT APPROACH CHART (IAC)

BRASÍLIA / Pres. Juscelino Kubitschek, INTL (SBBR)

ILS Y RWY 29R

AD ELEV: 3497'	ATIS 127.80	APP BRASÍLIA 119,20 119,50 119,70 120,00 129,60 121,50	TWR BRASÍLIA 118,10 118,45 121,50	GNDQ BRASÍLIA 121,80
RMK: 1) Observar compulsoriamente seção CAR da AIP-MAP. RMK: 1) CAR section of AIP-MAP shall be observed. 2) RNP APCH. 2) RNP APCH.		Aproximação Perdida: Subir para 6000' no rumo 287. Após 5000', curvar à direita para espera em BR056. Missed Approach: Climb to 6000' on track 287. After 5000', turn right for holding at BR056.		



ILS RDH 55'		THR ELEV 3479'		FAP TIGNI 5150'		IF KOTVU 5500'		TA 7000'					
		0.0 0.8		5.0 10.0		TO THR 29R (NM)		TO IND (DME)					
		1.9 2.7		6.9 11.9									
RWY29R	0.8	1.0	2.0	3.0	4.0	TIGNI	KT	090	110	130	150	170	190
ALT	3790	3853	4174	4497	4822	5150	FPM	500	600	700	800	900	1000
(HGT)	311	374	695	1010	1343	1671	FAP-MAPT	NIL					
POUSO DIRETO STRAIGHT-IN	CAT		A		B		C		D		E		
CAT I	DA / OCH / TETO						3790 / 320 / 400						
	ALS/NO ALS/ RVR ALS (m)						800 / 1400 / 700						
CIRCULAR TO CIRCLE	MDA / OCH / TETO						NA						
	VIS (m)												

MODIFICAÇÕES / CHANGES: JDC, FEFEL, PROPRIE.