

**INSTRUMENT APPROACH  
CHART (IAC)**

**CUIABÁ / Marechal Rondon, INTL (SBCY)**

**AD ELEV: 617'**

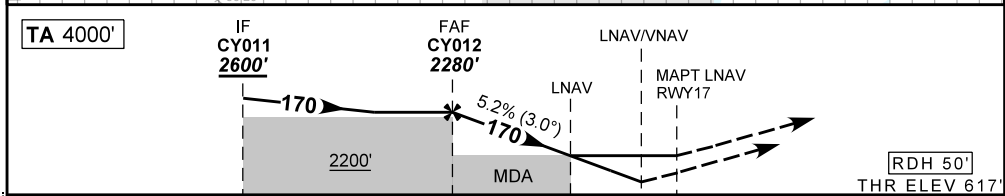
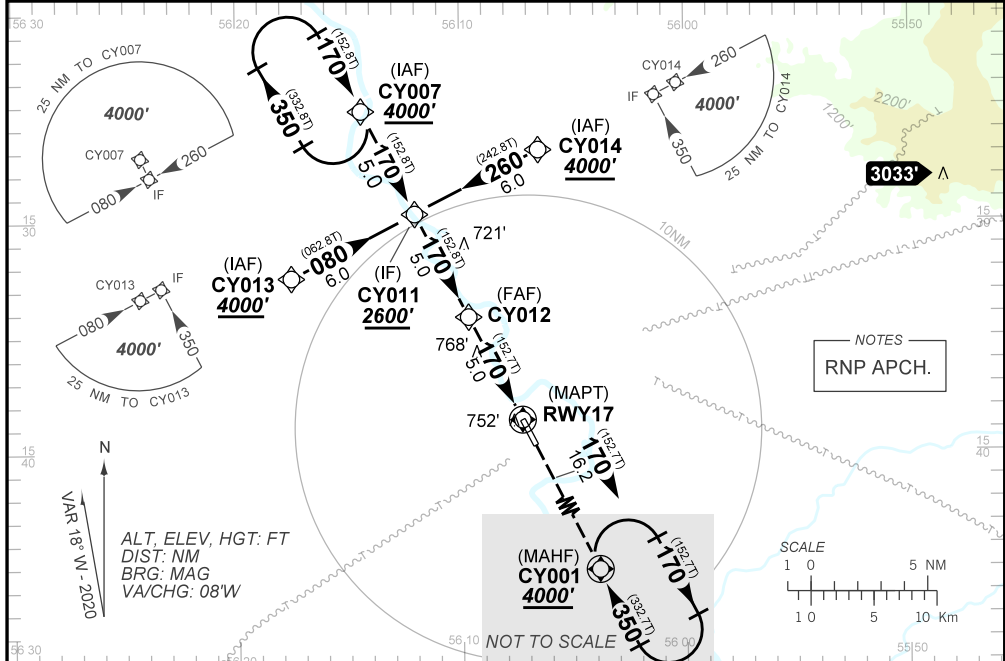
**RNAV(GNSS) Z RWY 17**

D-ATIS <b>127.85</b>	APP CUIABÁ <b>119.40 120.35 128.90 121.50</b>			TWR CUIABÁ <b>118.10 121.50</b>	GNDC CUIABÁ <b>121.90</b>
<b>N/A</b>	FINAL CRS <b>170°</b>	FAF: <b>2280'</b>	LNAV/VNAV DA / (OCH): <b>932' / (315')</b>	LNAV MDA / (OCH): <b>1020' / (410')</b>	

APCH Perdida: Subir para **4000'**. Manter proa **170** até CY001 para espera.

Missed APCH: Climb up to **4000'**. Mantain course **170** to CY001 for holding.

RMK: 1) Para sistemas não compensados, LNAV/VNAV não autorizado abaixo de 0°C e acima de 55°C.  
1) For uncompensated systems, LNAV/VNAV procedure not authorized below 0°C and above 55°C.



TO THR 17 (NM) 10.0 5.0 1.1 0.8 0.0

	CY012	4.0	3.0	2.0	1.1	RWY17	KT	090	110	130	150	170	190
	2280	1941	1623	1304	1020	ALT	FPM	500	600	700	800	900	NA
	1663	1324	1006	687	410	(HGT)	FAF-MAPT	NA					

STRAIGHT-IN	CAT	A	B	C	D	E
	DA / (OCH)	932' / (315')				NA
LNAV/VNAV	ALS/NO ALS/ RVR ALS (m)	NIL / 1400 / NIL				
	MDA / (OCH)	1020' / (410')				
LNAV	ALS/NO ALS/ RVR ALS (m)	NIL / 1600 / NIL		NIL / 1900 / NIL		
	MDA / (OCH)	NA				
CIRCLING	MDA / (OCH)	NA				
	VIS (m)	NA				

CHANGES: DA, IDENT, LAYOUT, MDA, PROC, VAR.