

**INSTRUMENT APPROACH
CHART (IAC)**

TERESINA / Senador Petrônio Portella (SBTE)

RNAV(GNSS) RWY 20

AD ELEV: 220'

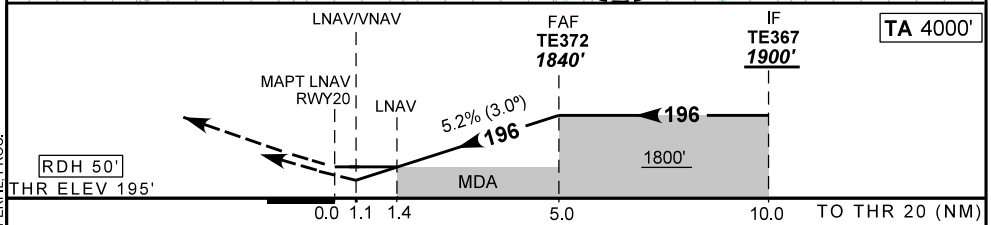
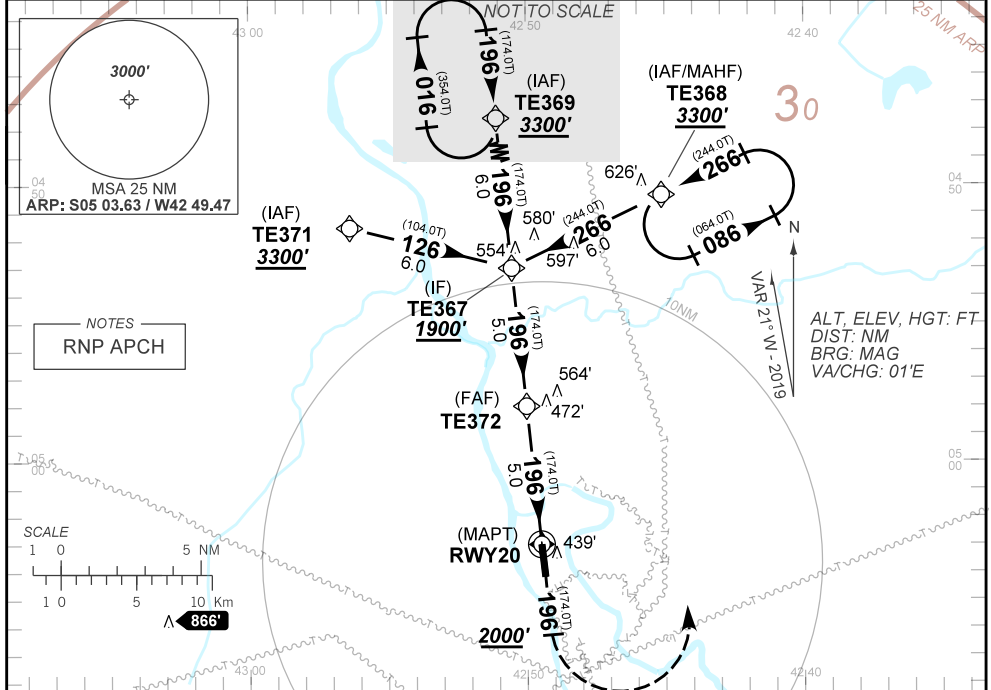
ATIS 127.80	APP TERESINA 119.60		TWR TERESINA 118.80	GND C NIL
N/A	FINAL CRS 196°	FAF 1840'	LNAV/VNAV DA / (OCH): 605' / (405')	LNAV MDA / (OCH): 700' / (510')

APCH Perdida: Subir para **3300'**. Após **2000'**, curvar à ESQUERDA direto TE368 para espera.

Missed APCH: Climb to **3300'**. After **2000'**, turn LEFT direct to TE368 for holding.

RMK: 1) Para sistemas não compensados Baro-VNAV, LNAV/VNAV NÃO AUTORIZADO abaixo de 0°C ou acima de 48°C.

1) For uncompensated systems Baro-VNAV, LNAV/VNAV NOT AUTHORIZED below 0°C or above 48°C.



RWY20	1.4	2.0	3.0	4.0	TE372													
ALT (HGT)	700	880	1200	1520	1840													
	505	685	1005	1325	1645													

STRAIGHT-IN	CAT	A	B	C	D	E
LNAV/VNAV	DA / OCH	605' / (405')				
	ALS/NO ALS/ RVR ALS (m)	NIL / 1900 / NIL				
LNAV	MDA / OCH	700' / (510')				
	ALS/NO ALS/RVR ALS (m)	NIL / 1600 / NIL		NIL / 2400 / NIL		
CIRCLING	MDA / OCH	NA				
	VIS (m)					

CHANGES: LAYOUT, MINM OPR, OBST, PERFL, PROC.