

AD ELEV: 184'

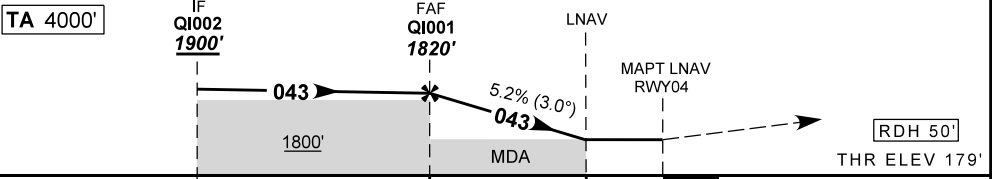
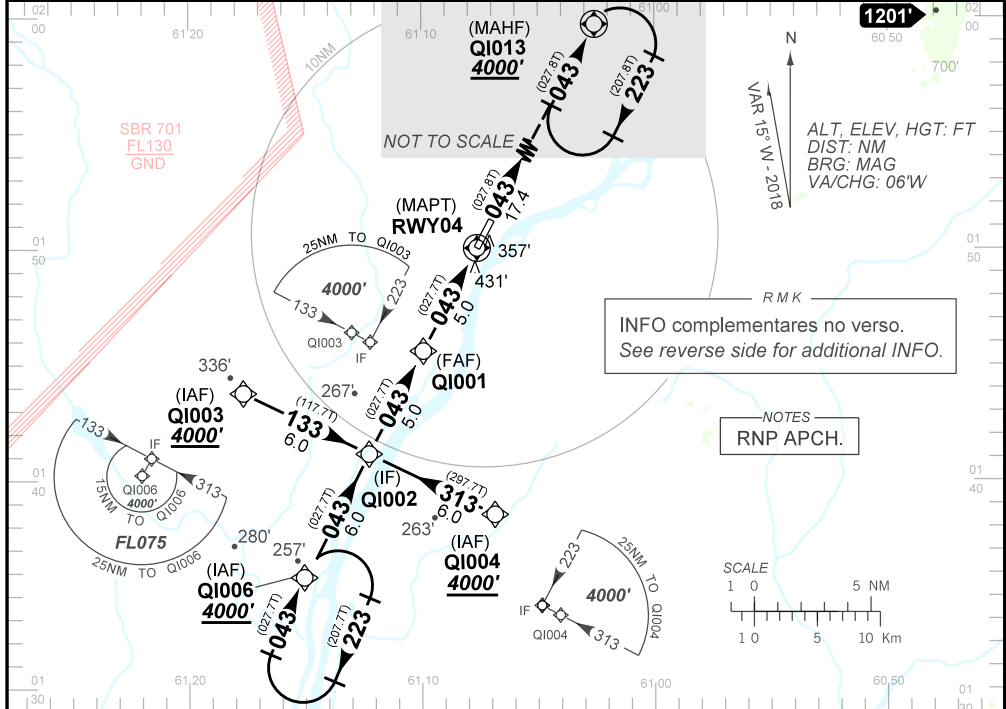
D-ATIS NIL	APP NIL	TWR NIL	CONTROLE BOA VISTA 120.10
N/A	FINAL CRS 043°	FAF: 1820'	N/A
		LNAV RASS (SBBV) MDA / (OCH): 980' / (800')	

APCH Perdida: Subir para **4000'**. Manter rumo **043** até QI013 para espera.

Missed APCH: Missed APCH: Climb to **4000'**. Maintain course **043** up to QI013 for holding.

RMK: 1) Realização do procedimento condicionada às regras específicas definidas pelo COMAER.

1) Procedure according specific rules defined by COMAER.



TO THR 04 (NM)	10.0	5.0	2.4	0.0								
	QI001	4.0	3.0	2.4	RWY04	KT	90	110	130	150	170	190
	1820	1503	1185	980	ALT	FPM	500	600	700	800	900	NA
	1641	1324	1005	800	(HGT)	FAF-MAPT	NA					

STRAIGHT-IN	CAT	A	B	C	D	E
LNAV	MDA / (OCH)	NA				NA
	ALS/NO ALS/ RVR ALS (m)					
LNAV RASS (SBBV)	MDA / (OCH)	980' / (800')				NA
	ALS/NO ALS/ RVR ALS (m)	NIL / 2000 / NIL		NIL / 3600 / NIL		
CIRCLING	MDA / (OCH)	NA				NA
	VIS (m)					

CHANGES: NEW CHART.

— R M K —

- 2 - Antes de iniciar o procedimento informar posição e intenção de voo na FREQ 123.45 MHz.
Before start procedure, report position and flight intentions at FREQ 123.45 MHZ.
- 3 - Utilizar o altímetro de SBBV.
Use altimeter setting from SBBV.
- 4 - Após a MDA, ao prosseguir para pouso, atentar para condições da pista e para a possibilidade de incursões em pista.
After the MDA, when proceeding for landing, watch field conditions to avoid runway incursions.
- 5 - Dados complementares:
Complementary data:

IDENT	LATITUDE/LONGITUDE
QI001	N 01:45.59 / W 61:09.95
QI002	N 01:41.14 / W 61:12.27
QI003	N 01:43.95 / W 61:17.57
QI004	N 01:38.33 / W 61:06.97
QI006	N 01:35.80 / W 61:15.06
QI013	N 02:05.47 / W 60:59.55
RWY04	N 01:50.03 / W 61:07.62