

**INSTRUMENT APPROACH
CHART (IAC)**

BRASÍLIA / Pres. Juscelino Kubitschek, INTL (SBBR)

AD ELEV: 3498'

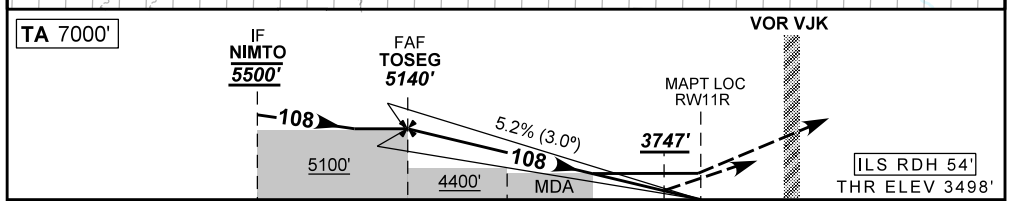
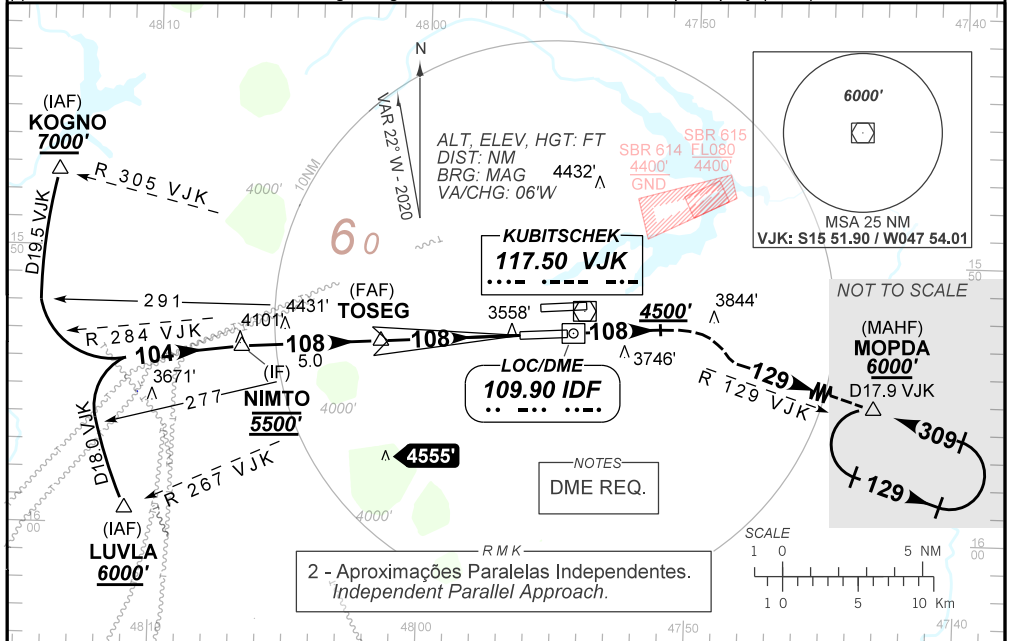
ILS X or LOC X RWY 11R

D-ATIS 127.80	APP BRASÍLIA 120.65 129.15 129.60 119.50 121.50	TWR BRASÍLIA 118.10 118.45 118.75 121.50	GNDC BRASÍLIA 121.80 121.95
LOC IDF 109.90 MHz	FINAL CRS 108°	FAF: 5140'	CAT I DA / (OCH): 3747' / (250') MDA / (OCH): 3880' / (390')

APCH Perdida: Subir para **6000'**. Manter proa **108** até **4500'**. Após, curvar à DIREITA para interceptar RDL **129** do VOR VJK até MOPDA para espera.

Missed APCH: Climb to **6000'**. Maintain heading **108** until **4500'**. After, turn RIGHT to intercept **129** RDL VJK VOR to MOPDA for holding.

RMK: 1(*)VIS RVR ALS 550m para APCH utilizando Diretor de Voo, Piloto Automático ou Head-Up Display(HUD). (*)VIS RVR ALS 550m for APCH using a Flight Director, Autopilot or Head-Up Display (HUD).



TO THR 11R (NM)	10.0	5.0	2.7	1.0	0.6	0.0
TO IDF (DME)	11.9	6.9	4.6	2.9	2.5	1.9

	TOSEG	4.0	3.0	2.0	1.0	RW11R		KT	090	110	130	150	170	190
	5140	4826	4507	4189	3880	ALT		FPM	500	600	700	800	900	1000
	1642	1328	1009	691	390	(HGT)		FAF-MAPT	NA					

STRAIGHT-IN	CAT	A	B	C	D	E
	DA / (OCH)	3747' / (250')				
CAT I	ALS/NO ALS/ RVR ALS (m)	800 / 1300 / 700(*)				
	MDA / (OCH)	3880' / (390')				
LOC	ALS/NO ALS/ RVR ALS (m)	800 / 1600 / NIL		1100 / 1800 / NIL		
	MDA / (OCH)	NA				
CIRCLING	MDA / (OCH)	NA				
	VIS (m)	NA				

CHANGES: LAYOUT, MISSED APCH.

AMDT 2007C 18 JUN 20

DEPARTAMENTO DE CONTROLE DO ESPAÇO AÉREO

SBBR_IAC_010 1/1
IAC ILS X or LOC X RWY 11R