

**INSTRUMENT APPROACH
CHART (IAC)**

GUARAPUAVA / Tancredo Thomas de Faria (SSGG)

AD ELEV: 3494'

RNAV (GNSS) RWY 26

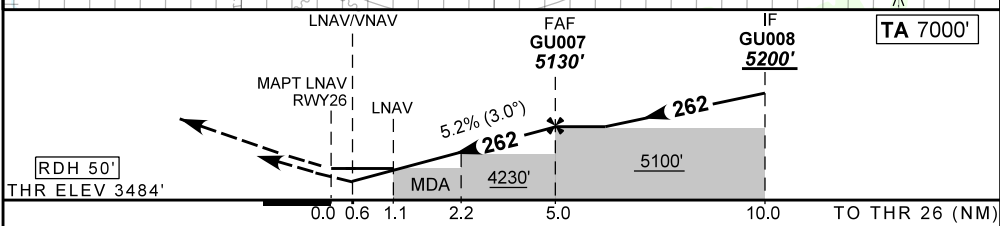
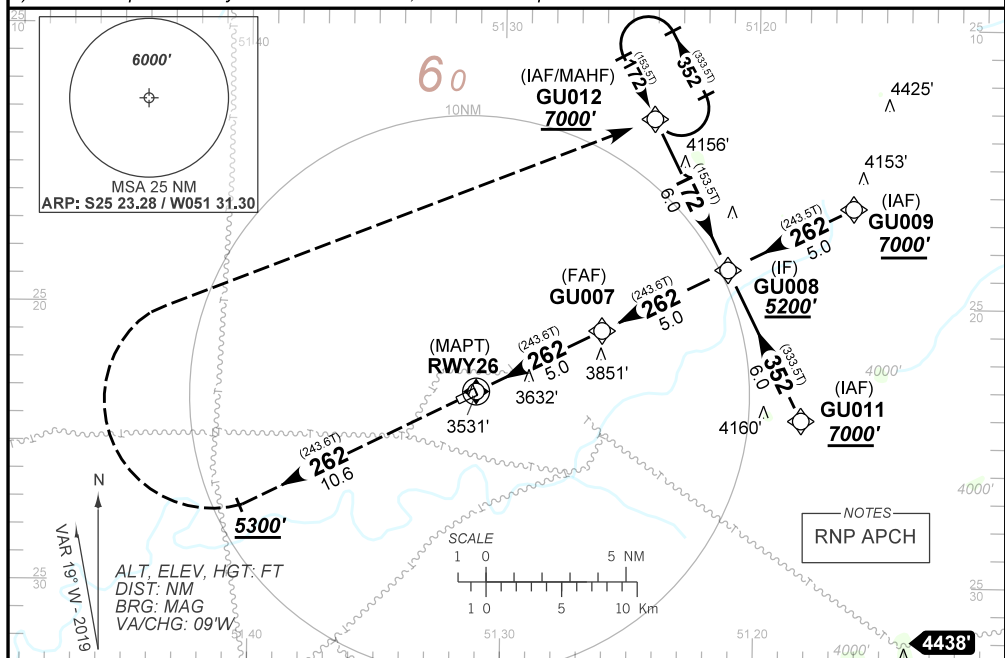
ATIS NIL	APP NIL		AFIS GUARAPUAVA 131.70	GNDC NIL
N/A	FINAL CRS 262°	FAF: 5130'	LNAV/VNAV DA / (OCH): 3734' / (250')	LNAV MDA / (OCH): 3870' / (390')

APCH Perdida: Subir para **7000'** no rumo **262**, após **5300'**, curvar à direita direto GU012 para espera.

*Missed APCH: Climb to **7000'** on course **262**, until **5300'**, turn right direct GU012 for holding.*

RMK: 1) Para sistema BARO-VNAV não compensados, procedimento LNAV/VNAV não autorizado abaixo de -10°C.

1) For uncompensated systems BARO-VNAV, LNAV/VNAV procedure not authorized below -10°C.



RWY26	1.1	2.0	3.0	4.0	GU007	KT	090	110	130	150	170	190
ALT	3870	4176	4494	4812	5130	FPM	500	600	700	800	NA	NA
(HGT)	386	692	1010	1328	1646	FAF-MAPT	NA					

STRAIGHT-IN	CAT	A	B	C	D	E
LNAV/VNAV	DA / (OCH)	3734' / (250')			NA	
	ALS/NO ALS/ RVR ALS (m)	NIL / 1300 / NIL				
LNAV	MDA / (OCH)	3870' / (390')			NA	
	ALS/NO ALS/ RVR ALS (m)	NIL / 1800 / NIL				
CIRCLING	MDA / (OCH)	NA				
	VIS (m)					

CHANGES: NEW CHART.