

INSTRUMENT APPROACH
CHART (IAC)

**CARTA DE USO EXCLUSIVO
ACFT MILITARES**

NATAL / Augusto Severo, MIL (SBNT)

PAR RWY 34R

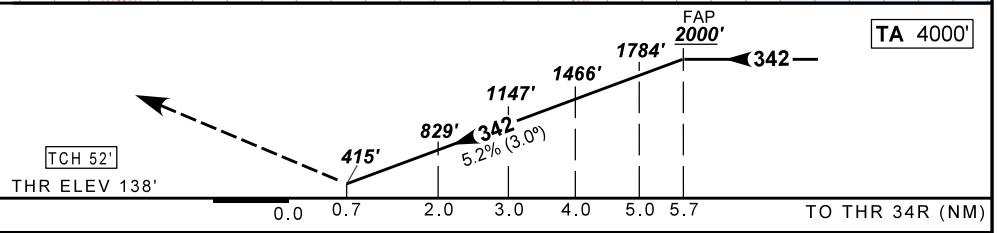
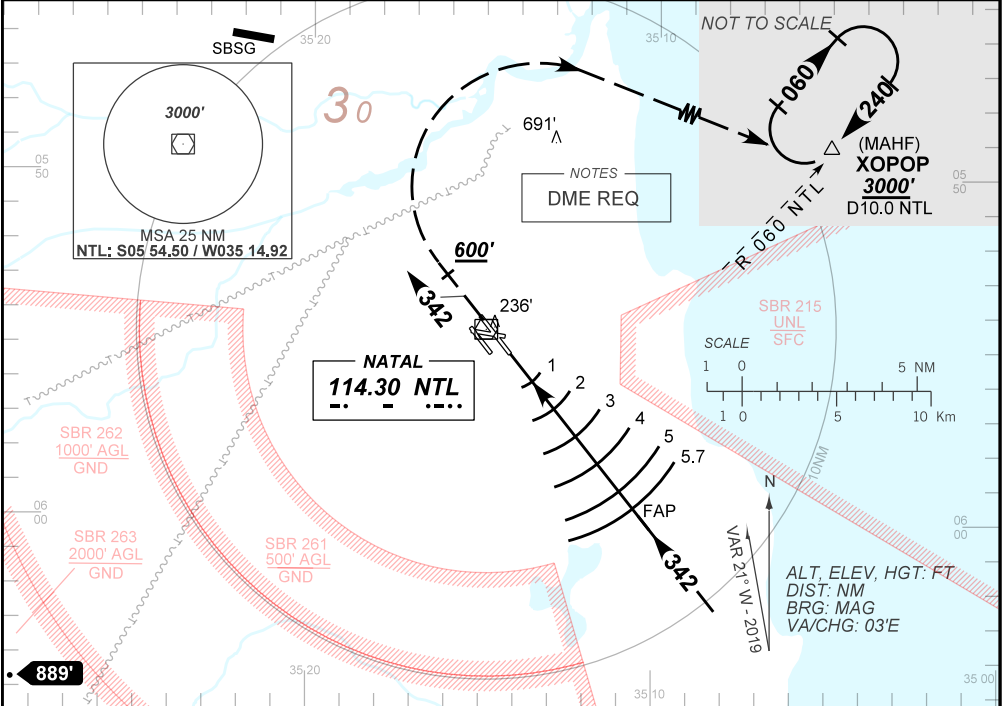
AD ELEV: 171'

| | | | | |
|-------------------------|--|---|---|-----------------------------|
| D-ATIS 132.65 | APP NATAL 119.30 119.65 120.65 129.80 121.50 | PAR NATAL 128.875 132.400 348.650 359.000 | TWR NATAL 118.70 122.80(MIL) 121.50 | GNDC Natal 121.90 |
| N/A | FINAL CRS 342° | FAP 2000' | PAR DA / (OCH): 415' / (277') | N/A |

APCH Perdida: Subir para **3000'**. Após **600'**, curvar à DIREITA direto NTL01 para espera.

Missed APCH: Climb to **3000'**. After **600'**, turn RIGHT direct to NTL01 for holding.

RMK: NIL.



| | | | | | | | | |
|-------|-----|----------|-----|-----|-----|-----|-----|------|
| RW34R | NIL | KT | 090 | 110 | 130 | 150 | 170 | 190 |
| ALT | NIL | FPM | 500 | 600 | 700 | 800 | 900 | 1000 |
| (HGT) | NIL | FAF-MAPT | NA | | | | | |

| | | | | | | |
|-------------|-------------------------|------------------|---|---|---|---|
| STRAIGHT-IN | CAT | A | B | C | D | E |
| PAR | DA / (OCH) | 415' / (277') | | | | |
| | ALS/NO ALS/ RVR ALS (m) | NIL / 1300 / NIL | | | | |
| | MDA / (OCH) | NA | | | | |
| | VIS (m) | NA | | | | |

AIRAC AMDT 20/18 08 NOV 18

DEPARTAMENTO DE CONTROLE DO ESPAÇO AÉREO
CARTA DE USO EXCLUSIVO ACFT MILITARES

SBNT_IAC_01M 1/1
IAC PAR RWY 34R

CHANGES: DA, EAC, MA, FREQ, LAYOUT, PROC.