

**INSTRUMENT APPROACH
CHART (IAC)**

CURITIBA / Baccheri (SBBI)

AD ELEV: 3059'

RNAV (GNSS) B RWY 36

ATIS 132.325	APP CURITIBA 119.95 119.70 120.65 120.95 129.55 133.15 121.50			TWR BACACHERI 118.90	GNDC BACACHERI 121.80
N/A	FINAL CRS 209°	FAF 4680'	LNAV/VNAV DA / (OCH): N/A	LNAV MDA / (OCH): N/A	

APCH Perdida: Subir para **7000'**, curvando à ESQUERDA direto EPGAV para espera.

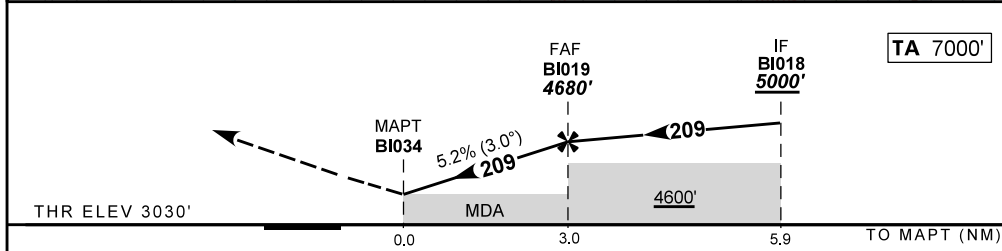
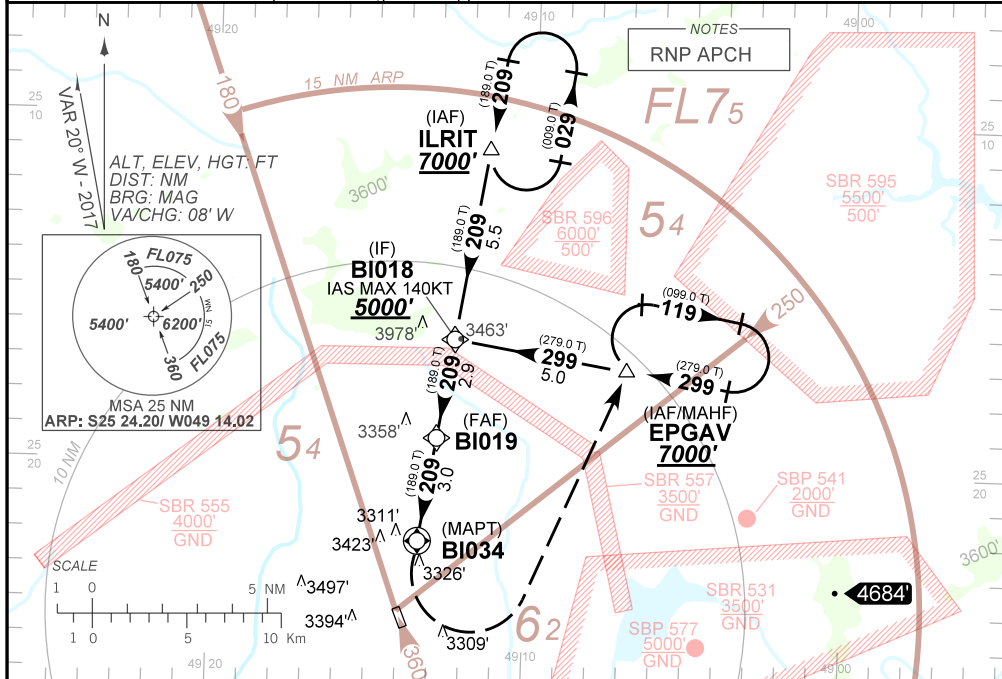
Missed APCH: Climbing **LEFT** turn to **7000'** direct to EPGAV for holding.

RMK: 1) proibido circular setor Oeste do AD entre os AZM 191 e 333. 2) procedimento para circular RWY36:

Circular pelo SECT E do AD interceptando a final com curva pela direita. 3) proibido circular para RWY18.

1) prohibited to circle W sector from AD between AZM 191 and 333. 2) procedure to circle RWY 36:

Circle E sector from AD to intercept final with right turn. 3) prohibited to circle to RWY 18.



MAPT	BI034	1.0	2.0	FAF		KT	090	110	130	150	170	190
ALT	3720	4035	4354	4680		FPM	500	600	700	NA		
(HGT)	670	1005	1324	1650		FAF-MAPT	NA					

STRAIGHT-IN	CAT	A	B	C	D	E
LNAV	MDA / OCH / TETO	NA				
	ALS/NO ALS/ RVR ALS (m)	NA				
CIRCLING	MDA / OCH / TETO	3720' / (670') / 700'			NA	
	VIS (m)	3700			NA	

CHANGES: RMK: