

**INSTRUMENT APPROACH  
CHART (IAC)**

**RIO DE JANEIRO / Santos Dumont (SBRJ)**

**AD ELEV: 11'**

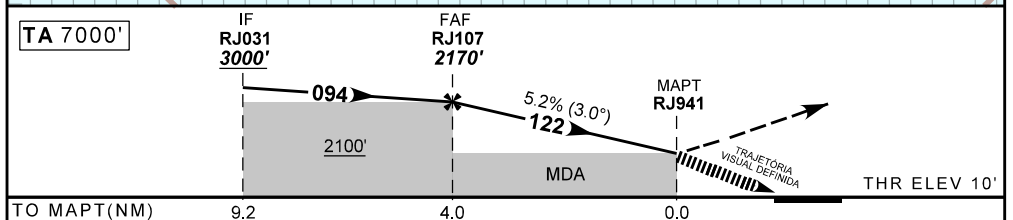
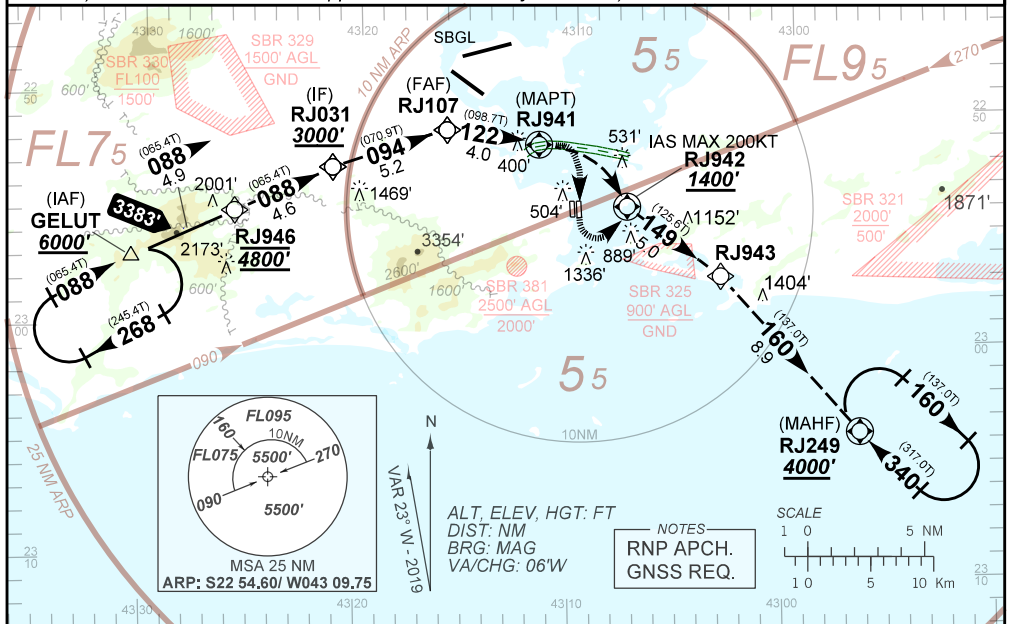
**RNAV(GNSS) E RWY 20L**

ATIS <b>132.65</b>	APP RIO <b>124.95 134.95 129.20 120.75 134.40 121.25 121.50</b>				TWR RIO <b>118.70 121.50</b>	GNDC RIO <b>121.70</b>
<b>N/A</b>	FINAL CRS <b>122°</b>	FAF: <b>2170'</b>	LNAV/VNAV DA / (OCH): <b>N/A</b>	LNAV MDA / (OCH): <b>N/A</b>		

APCH Perdida: Subir para **4000'**. Curvar à DIREITA direto RJ942. Curvar à ESQUERDA no rumo **149** até RJ943. Curvar à DIREITA no rumo **160** até RJ249 para espera.

Missed APCH: Climb to **4000'**. Turn **RIGHT** direct to RJ942. Turn **LEFT** course **149** up to RJ943. Turn **RIGHT** course **160** up to RJ249 for holding.

RMK: 1) IAS MAX 160KT na aproximação final e nas trajetórias visuais. 2) INFO complementares no verso.  
1) IAS MAX 160KT on final approach and visual trajectories. 2) See reverse side for additional INFO.



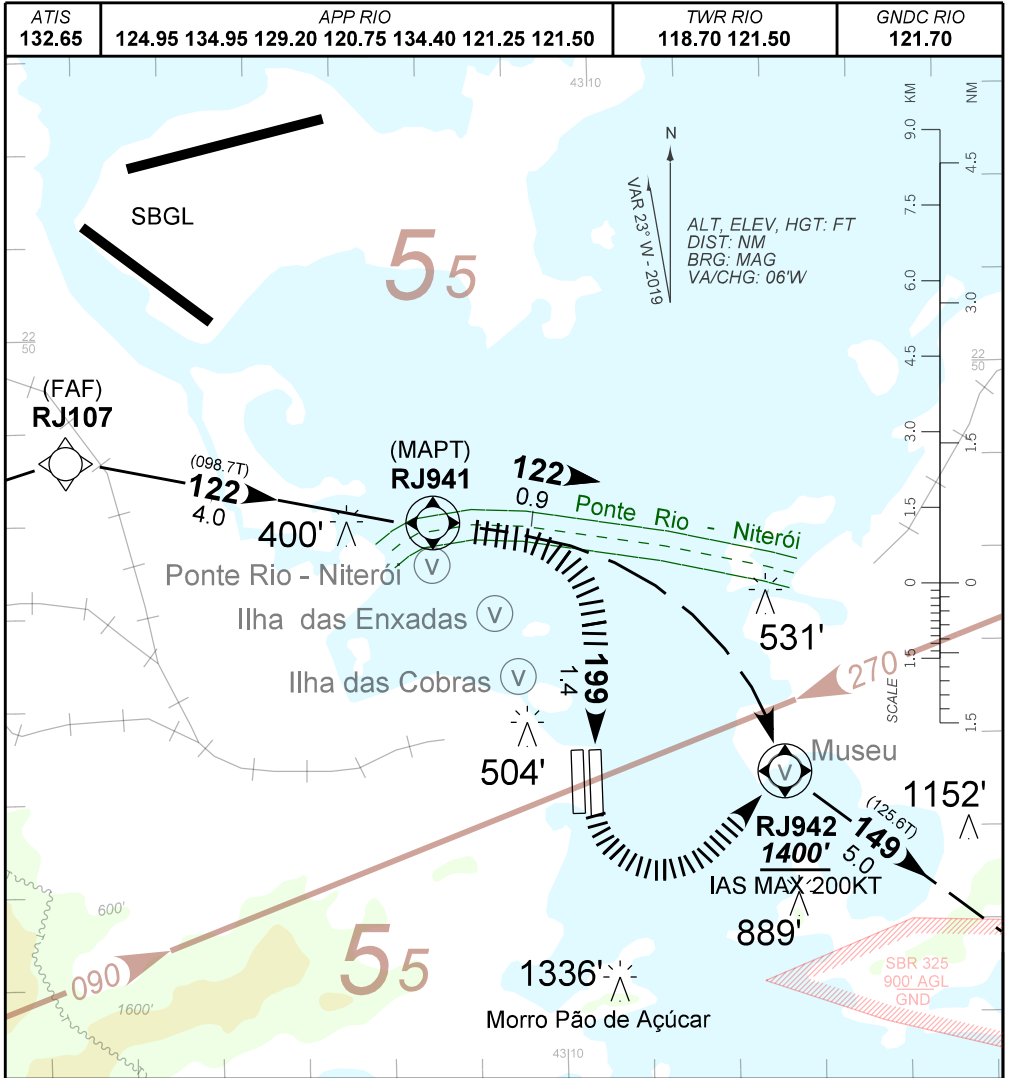
TA 7000'	IF RJ031 3000'	FAF RJ107 2170'	MAPT RJ941	THR ELEV 10'
	094	122		
	2100'			
TO MAPT(NM)	9.2	4.0	0.0	

	RJ107	3.0	2.0	1.0	RJ941	MAPT	KT	090	110	130	150	170	190
	2170	1855	1537	1218	900	ALT	FPM	500	600	700	800	NA	NA
	2159	1844	1526	1207	890	(HGT)	FAF-MAPT	NA					
STRAIGHT-IN	CAT	A		B		C		D		E			
LNAV	MDA / (OCH)												
	ALS/NO ALS/ RVR ALS (m)	NA											
LNAV/VNAV	DA / (OCH)												
	ALS/NO ALS/ RVR ALS (m)	NA											
CIRCLING	MDA / (OCH)	900' / (890')											
	VIS (m)	NIL / 4400 / NIL											
												NA	

CHANGES: LAYOUT, MDA, PROC, VAR, VIS.

AD ELEV: 11'

RNAV(GNSS) E RWY 20L



**TRAJETÓRIA VISUAL DEFINIDA RWY 20L  
VISUAL PRESCRIBED TRACK RWY 20L**

- 3) O piloto deverá estar em contato visual e prover sua própria separação com as referências visuais:  
*The pilot should have visual contact and provide his own separation with the visual references:*  
PONTE RIO - NITERÓI, ILHA DAS ENXADAS, ILHA DAS COBRAS e I and MUSEU.
- 4) Em caso de arremetida durante a manobra para circular: Subir para 4000' e voar direto RJ942 para interceptar a trajetória de aproximação perdida publicada.  
*In case of go around during the visual manoeuvring: Climbing to 4000' and fly direct to RJ942 to intercept the trajectory of the missed approach published.*

CHANGES: LAYOUT, MDA, PROC, VAR, VIS.