

STANDARD DEPARTURE CHART
INSTRUMENT (SID)

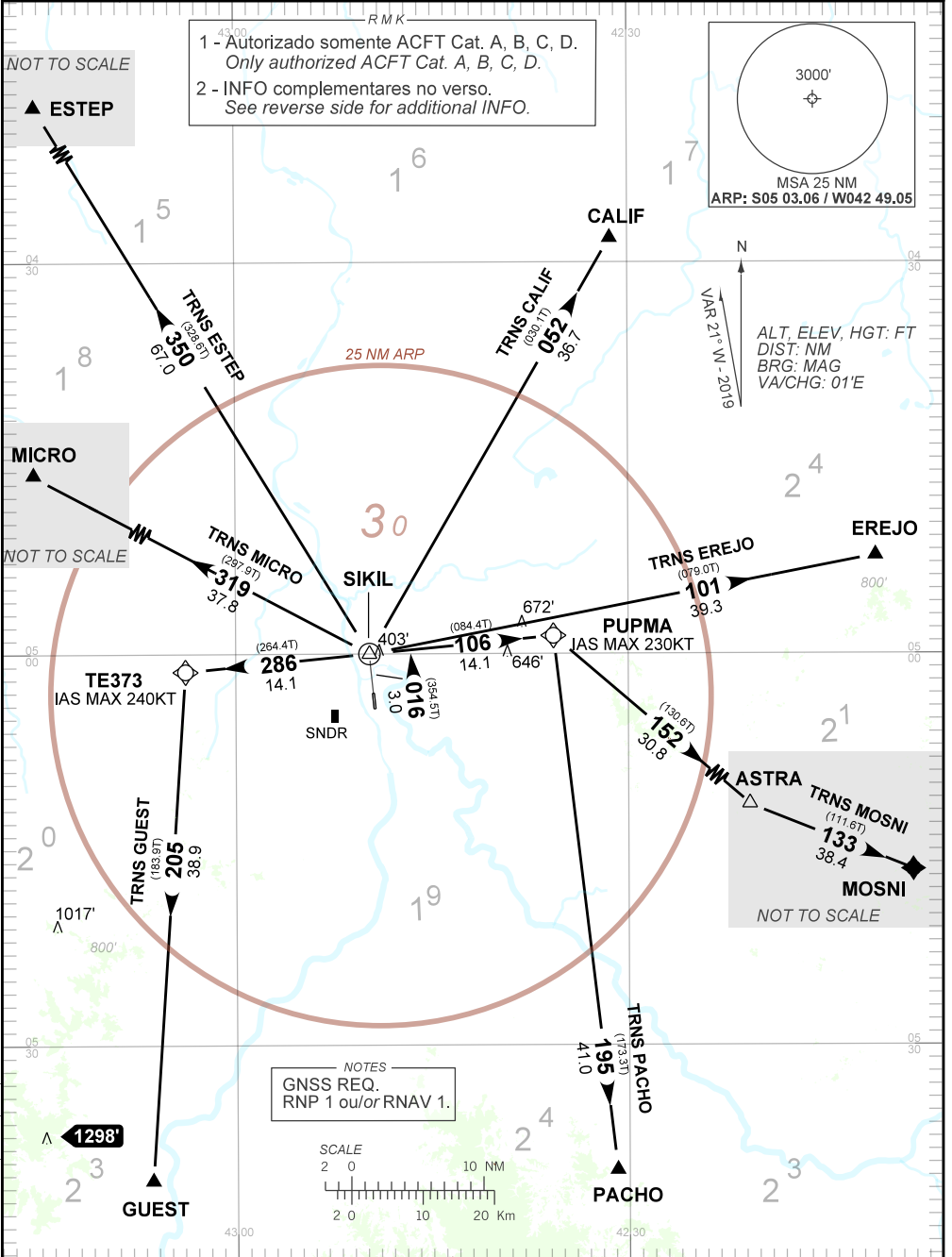
TERESINA/ Senador Petrônio Portella (SBTE)

RWY 02

RNAV SIKIL 1C

AD ELEV: 220'

| | | | | |
|----------|------------------------|------------------------|--|------------------------------------|
| TA 4000' | TWR TERESINA 118.80 | APP TERESINA 119.60 | ACC AMAZÔNICO 126.15 128.30 133.70 121.50 | ACC RECIFE 125.15 135.25 121.50 |
|----------|------------------------|------------------------|--|------------------------------------|



— RMK —

3 - Obstáculos próximos não considerados para cálculo do gradiente do procedimento (PDG):

Close-in obstacles not considered for procedure gradient (PDG):

- árvore/ *tree*: a partir de/from THR 20, AZM 050, DIST 313M, ELEV 262'.
- poste/ *pole*: a partir de/from THR 20, AZM 016, DIST 232M, ELEV 213'.
- poste/ *pole*: a partir de/from THR 20, AZM 356, DIST 213M, ELEV 213'.
- chaminé/ *chimney*: a partir de/from THR 20, AZM 034, DIST 888M, ELEV 285'.