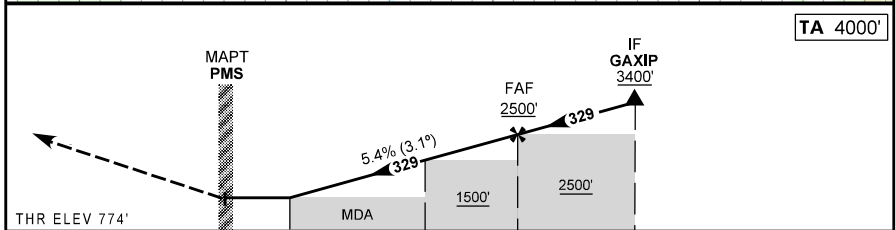
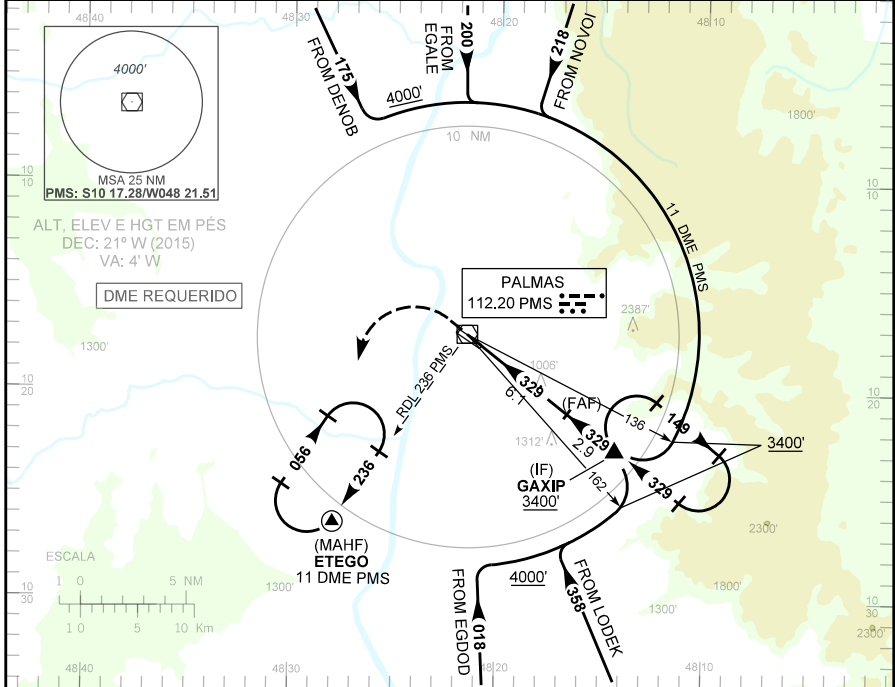


CARTA DE APROXIMAÇÃO
POR INSTRUMENTOS (IAC)
INSTRUMENT APPROACH CHART (IAC)

PALMAS / Brig. Lysias Rodrigues (SBPJ)

VOR RWY 32

AD ELEV: 774'	ATIS NIL	APP PALMAS 119.00 121.50	TWR PALMAS 118.00 121.50	GNDC NIL
RMK: IAS MAX no afastamento 210 KT.			Aproximação Perdida: Subir para 4000'. Curvar à esquerda, RDL 236 PMS para espera em ETEGO.	



	0.6	3.2	5.2	8.1	10.1	11.0	TO THR 32 (NM)
	1.5	4.1	6.1	9.0			TO PMS (DME)

DME PMS	1.5	2.0	3.0	4.0	5.0	6.1	KT	090	110	130	150	170	190
ALT	1260	1406	1698	1988	2280	2500	FPM	500	600	700	800	900	1000
(HGT)	486	632	924	1214	1506	1726	FAF-MAPT 6.1NM	4:04	3:20	2:49	2:26	2:09	1:56

POUSO DIRETO	CAT	A	B	C	D	E
VOR	MDA / OCH / TETO	1260 / 490 / 500				
	ALS/NO ALS/ RVR ALS (m)	NIL / 1600 / NIL		NIL / 2300 / NIL		
CIRCULAR	MDA / OCH / TETO	NA				
	MS (m)					

MODIFICAÇÕES: VS