

INSTRUMENT APPROACH  
CHART (IAC)

RIO DE JANEIRO / Campo Délio Jardim de Mattos, MIL (SBAF)

CARTA DE USO EXCLUSIVO  
ACFT MILITARES

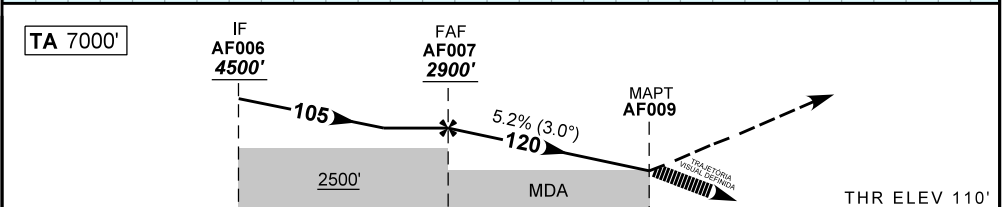
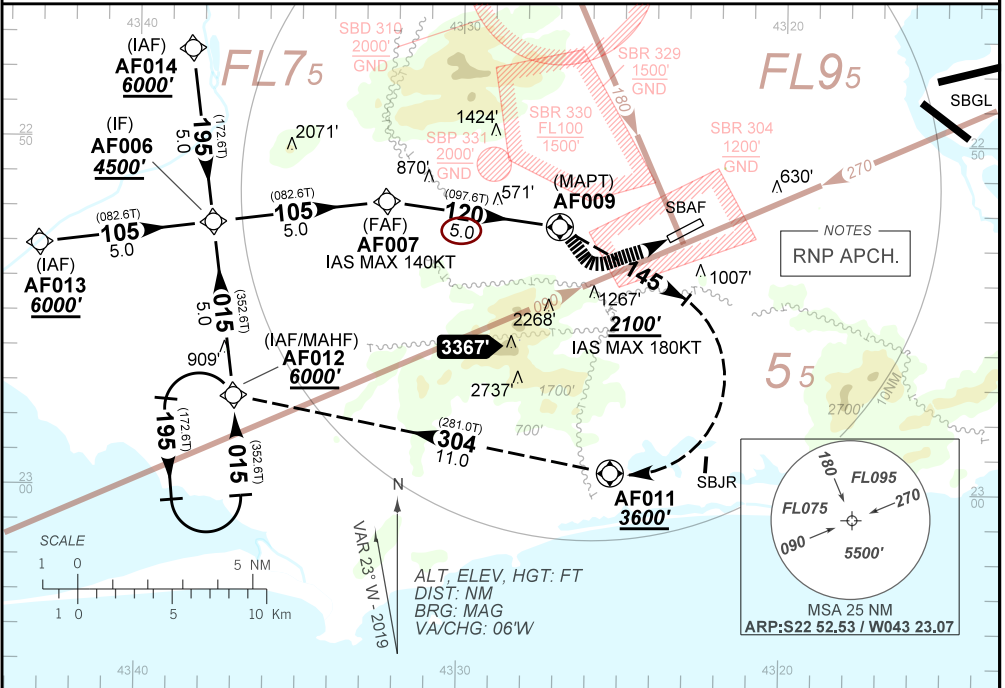
RNAV(GNSS) B RWY 08

AD ELEV: 112'

ATIS NIL	APP RIO 119.00 119.35 120.55 126.20 128.90 129.20 129.80 133.30 121.50				AFIS AFONOSOS 118.90 121.85 121.50	GND C AFONOSOS 121.85
N/A	FINAL CRS 120°	FAF 2900'	LNAV/VNAV DA / (OCH): N/A		LNAV MDA / (OCH): N/A	

APCH Perdida: 1) Subir para **6000'**. Manter rumo **145°** até cruzar **2100'**. Após, curvar à DIREITA direto AF011. Manter rumo **304°** até AF012 para espera. 2) Gradiente MNM 3.5% até AF011, após, 2.5%.  
Missed APCH: 1) Climb to **6000'**. Maintain course **145°** until passing **2100'**. After, turn RIGHT direct to AF011. Maintain course **304°** up to AF012 for holding. 2) MNM gradient 3.5% up to AF011, after, 2.5%.

RMK: NIL.



TO MAPT (NM) 10.0 5.0 0.0

AF007	4.0	3.0	2.0	1.0	AF009	MAPT	KT	090	110	130	150	170	190
2900	2590	2270	1945	1630	1310	ALT	FPM	500	600	700	800	NA	NA
2790	2480	2160	1835	1520	1200	(HGT)	FAF-MAPT	NA					

STRAIGHT-IN	CAT	A	B	C	D	E
	MDA / (OCH)	NA				
CIRCLING	MDA / (OCH)	1310' / (1200')				NA
	MS (m)	4800				

CHANGES: NEW CHART.

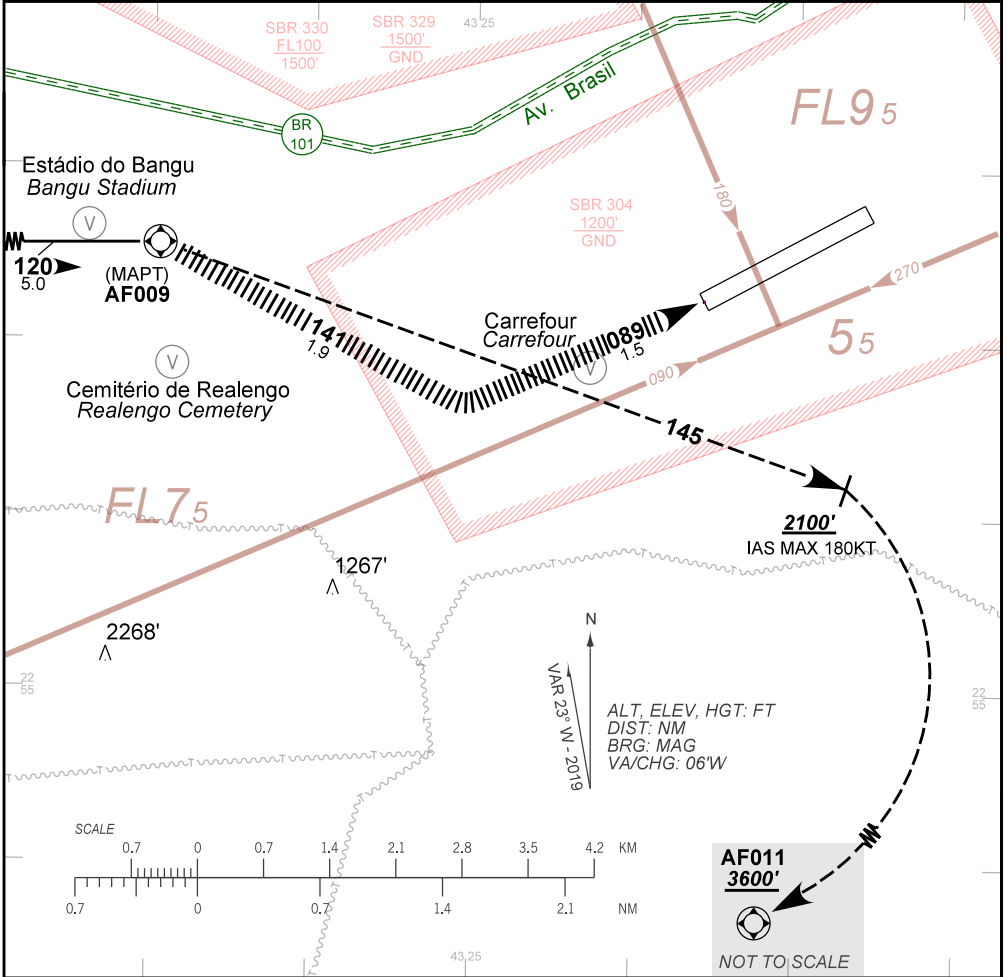
AIRAC AMDT 22/19 05 DEC 19

DEPARTAMENTO DE CONTROLE DO ESPAÇO AÉREO  
CARTA DE USO EXCLUSIVO: ACFT MILITARES

SBAF\_IAC\_00S 1/2  
IAC RNAV(GNSS) B RWY 08

AD ELEV: 112'

ATIS NIL	APP RIO 119.00 119.35 120.55 126.20 128.90 129.20 129.80 133.30 121.50	AFIS AFONSOS 118.90 121.85 121.50	GNDC AFONSOS 121.85
-------------	--	--------------------------------------	------------------------



**TRAJETÓRIA VISUAL DEFINIDA RWY 08  
VISUAL PRESCRIBED TRACK RWY 08**

1) O procedimento deverá ser autorizado pelo APP RIO durante a aproximação final e aproximação perdida.  
*Procedure must be authorized by RIO APP on final and missed approaches.*

2) O piloto deverá estar em contato visual e prover sua própria separação com as referências visuais: Cemitério de Realengo (S22 53.13, W43 26.87), Carrefour (S22 53.13, W43 24.28) e Estádio do Bangu (S22 52.35, W43 27.40).

*The pilot should have visual contact and provide his own separation with the visual references: Realengo Cemetery (S22 53.13 W43 26.87), Carrefour (S22 53.13 W43 24.28) and Bangu Stadium (S22 52.35, W43 27.40).*

3) Em caso de perda de referência visual, durante a manobra para circular: subir para 3600' no rumo 085. Ao passar 2500', curvar à direita direto AF011 para interceptar a trajetória de aproximação perdida publicada.  
*In case of visual reference loss during the circling maneuvering: climb to 3600' on course 085. After passing 2500', turn right direct to AF011 to intercept the trajectory of the missed approach published.*

4) Observar AIC sobre circulação visual na Terminal Rio de Janeiro.  
*See AIC about visual flight in Rio de Janeiro Terminal Area.*

CHANGES: NEW CHART.