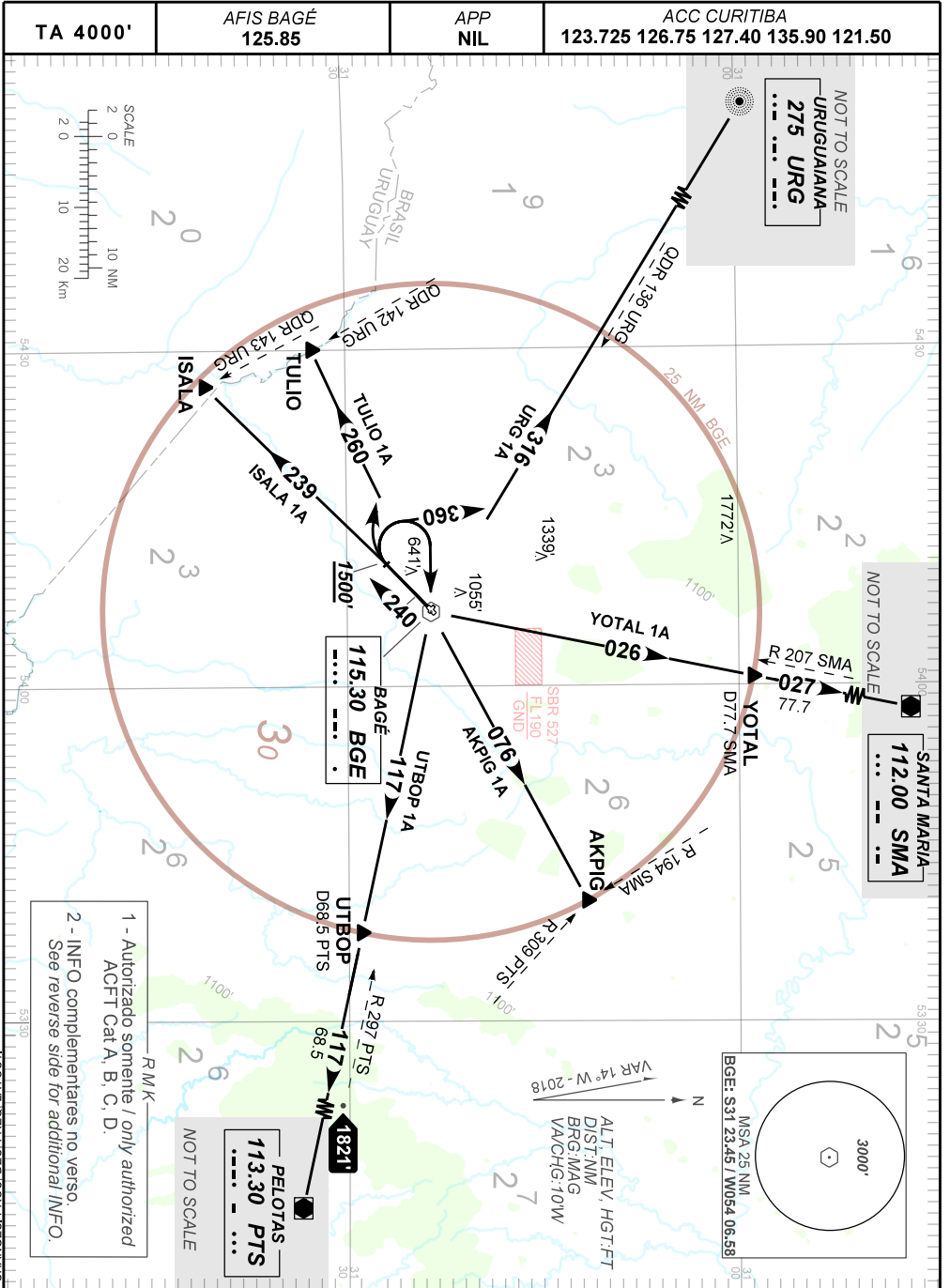


STANDARD DEPARTURE CHART  
INSTRUMENT (SID)

BAGÉ / Comandante Gustavo Kraemer (SBBG)  
RWY 24

AKPIG 1A - ISALA 1A - TULLIO 1A - URG 1A  
UTBOP 1A - YOTAL 1A

AD ELEV: 611'



CHANGES: PROC. DEC. FREQ. LAYOUT

—RMK—

3 - SID AKPIG 1A, UTBOP 1A, e / *and* YOTAL 1A: IAS MAX 210KT até / *until* VOR BGE

4 - SID YOTAL 1A: não utilizável / *not available* quando / *when* SBR 527 estiver ativada / *activated*.