

NATAL / Augusto Severo, MIL (SBNT)  
RN-BRASIL  
VOR OU VOR/DME Z RWY 16L

IAC - SBNT

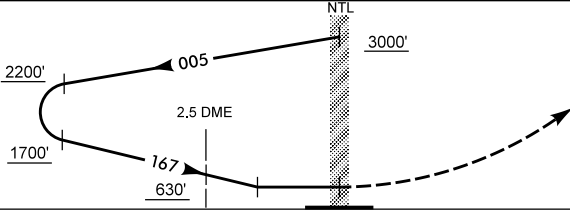
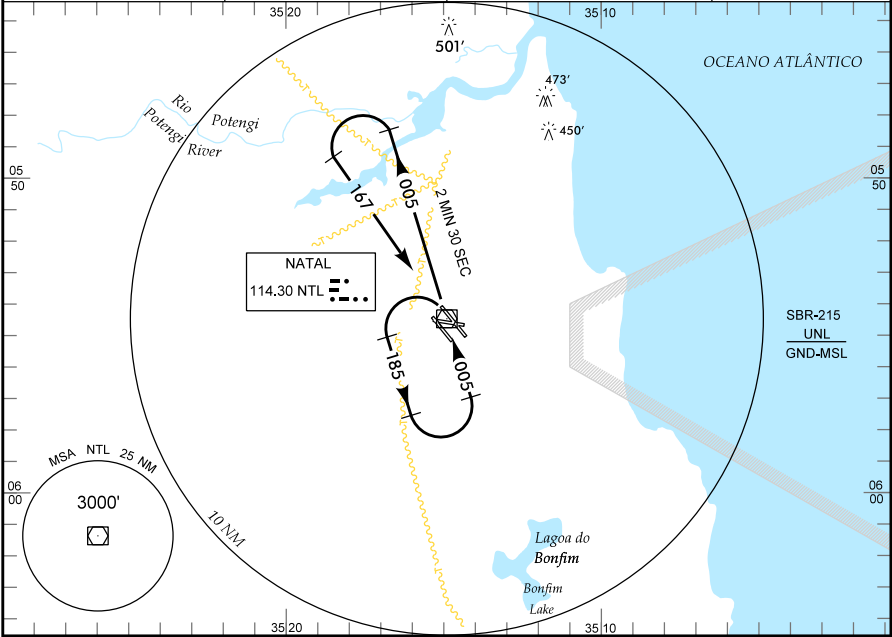
WGS84

ATIS  
132.65

APP NATAL  
119.30 119.65 121.50

TWR NATAL  
118.70 122.80(MIL) 121.50

GNDC NATAL  
121.90



TA 4000'

ELEV 169'

NM

APROXIMAÇÃO PERDIDA SUBIR PARA 3000' RDL 167.

RMK: ESPERA: IAS MAX 170 KT.

| C | POUSO DIRETO RWY 16L |           | IFR OPS DIURNA / NOTURNA |           | PARA CIRCULAR |      |      |        |
|---|----------------------|-----------|--------------------------|-----------|---------------|------|------|--------|
|   | VOR                  |           | VOR/DME                  |           |               |      |      |        |
| A | VOR                  |           | VOR/DME                  |           |               |      |      |        |
| T | MDA 630'             | TETO 500' | MDA 530'                 | TETO 400' |               |      |      |        |
| A | VIS                  |           | VIS                      |           | CAT           | MDA  | TETO | VIS    |
| B | 1600 M               |           | 1600 M                   |           | A             | 630' | 500' | 1600 M |
| C | 2000 M               |           | 2000 M                   |           | B             | 670' | 600' | 2400 M |
| D | 2400 M               |           | 2000 M                   |           | C             | 760' | 700' | 3600 M |
| E | 2800 M               |           | 2000 M                   |           | D             | 860' | 800' | 4400 M |
|   | 2800 M               |           | 2000 M                   |           | E             | 960' | 800' | 4400 M |

RAZÃO DE DESCIDA NA APROXIMAÇÃO FINAL

| KT  | 090 | 110 | 130 | 150 | 170 | 190 |  |  |  |  |  |  |  |
|-----|-----|-----|-----|-----|-----|-----|--|--|--|--|--|--|--|
| FPM | 700 |     |     |     |     |     |  |  |  |  |  |  |  |

MODIFICAÇÕES/CHANGES- IDENT. MINM. OPR.