

INSTRUMENT APPROACH
CHART (IAC)

GUARUJÁ / Base Aérea de Santos, MIL (SBST)

AD ELEV: 13'

RNAV(GNSS) RWY 35

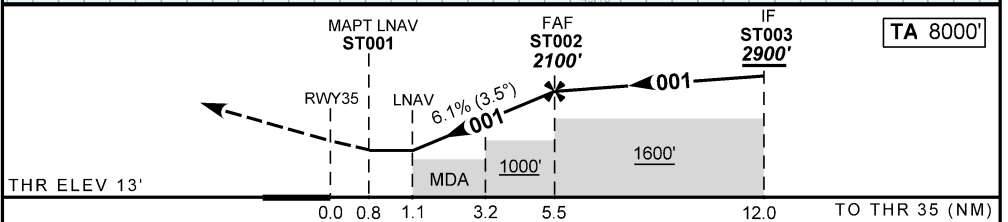
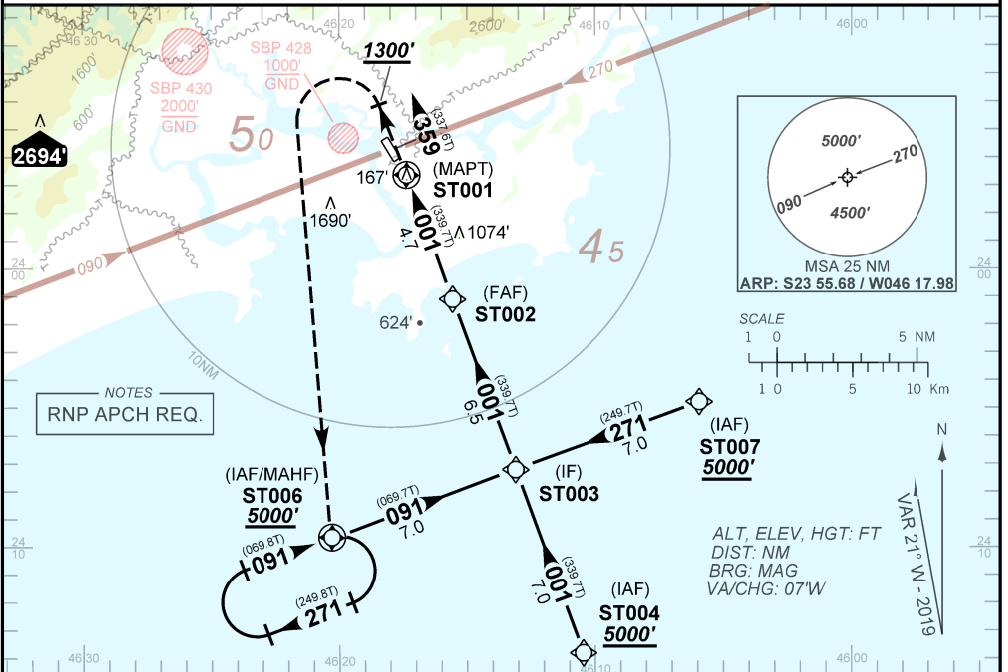
ATIS NIL	APP SÃO PAULO 119.00 120.10 120.55 128.90 121.50	AFIS SANTOS 132.225 118.65 121.50	GNDIC NIL
N/A	FINAL CRS 001°	FAF 2100'	LNAV/VNAV DA / (OCH): N/A
		LNAV MDA / (OCH): 480' / (470')	

APCH Perdida: 1) Subir para **5000'**, GRAD 5.0%. Manter curso **359** até passar **1300'**. Curvar à ESQUERDA direto ST006 para espera.

Missed APCH: 1) Climb to **5000'**, GRAD 5.0%. Maintain course **359** until passing **1300'**. Turn LEFT direct ST006 for holding.

RMK: 1) Aproximação perdida: MAX IAS 160KT. 2) Proibido circular pelo setor "E".

1) Missed Approach: MAX IAS 160KT. 2) Circling prohibited by "E" sector.



RWY35	1.1	2.0	3.0	4.0	5.0	ST002	KT	090	110	130	150	170	190
ALT	480	805	1175	1546	1916	2100	FPM	570	690	820	950	1070	1200
(HGT)	467	792	1162	1533	1903	2087	FAF-MAPT	NA					

STRAIGHT-IN	CAT	A	B	C	D	E
LNAV/VNAV	DA / (OCH)	NA				
	MALS/NO MALS/RVR ALS (m)	NA				
LNAV	MDA / (OCH)	480' / (470')				N/A
	MALS/NO MALS/RVR ALS (m)	NIL / 1600 / NIL		NIL / 2200 / NIL		
CIRCLING	MDA / (OCH)	880' / (870')	1060' / (1050')	2090' / (2080')	N/A	
	VIS (m)	2000	2400	4800		

CHANGES NEW CHART