

**INSTRUMENT APPROACH
CHART (IAC)**

ARACAJU / Santa Maria, INTL (SBAR)

AD ELEV: 23'

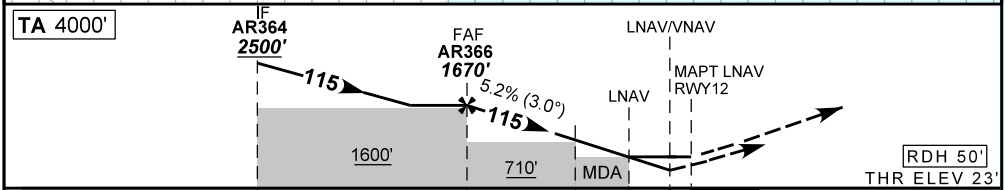
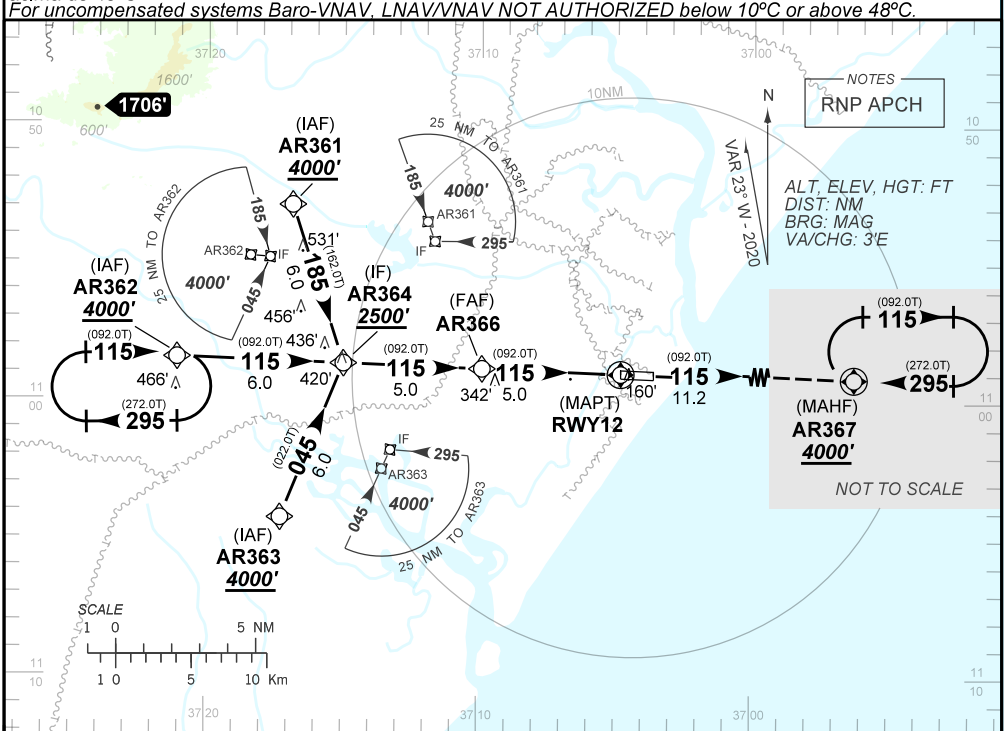
RNAV (GNSS) Z RWY 12

ATIS NIL	APP ARACAJU 120.30 129.25 121.50		TWR ARACAJU 118.80	GNDC NIL
N/A	FINAL CRS 115°	FAF 1670'	LNAV/VNAV DA / (OCH): 423' / (400')	LNAV MDA / (OCH): 570' / (550')

APCH Perdida: Subir para **4000'** no curso **115** para espera em AR367.

Missed APCH: Climb to **4000'** on course **115** for holding at AR367.

RMK: Para sistemas não compensados Baro-VNAV, LNAV/VNAV NAO AUTORIZADO abaixo de 10°C ou acima de 48°C.



TO THR 12 (NM)	10.0	5.0	2.0	1.6	1.1	0.0	
	AR366	AR364	AR366	AR366	MAPT	RWY12	
	4.0	3.0	2.0	1.6			
	1670	1347	1028	710	570	ALT	
	1647	1324	1005	687	550	(HGT)	
	KT	090	110	130	150	170	190
	FPM	500	600	700	800	900	NA
	FAF-MAPT	NA					

STRAIGHT-IN	CAT	A	B	C	D	E
LNAV/VNAV	DA / (OCH)	423' / (400')				NA
	ALS/NO ALS/ RVR ALS (m)	NIL / 1800 / NIL				
LNAV	MDA / (OCH)	570' / (550')				
	ALS/NO ALS/RVR ALS (m)	NIL / 1600 / NIL		NIL / 2500 / NIL		
CIRCLING	MDA / (OCH)	NA				
	VIS (m)					

CHANGES: LAYOUT, MIN OPR, PROC.