

**INSTRUMENT APPROACH
CHART (IAC)**

SÃO PAULO / Guarulhos - Gov. André Franco Montoro, INTL (SBGR)

AD ELEV: 2461'

ILS N RWY 27L

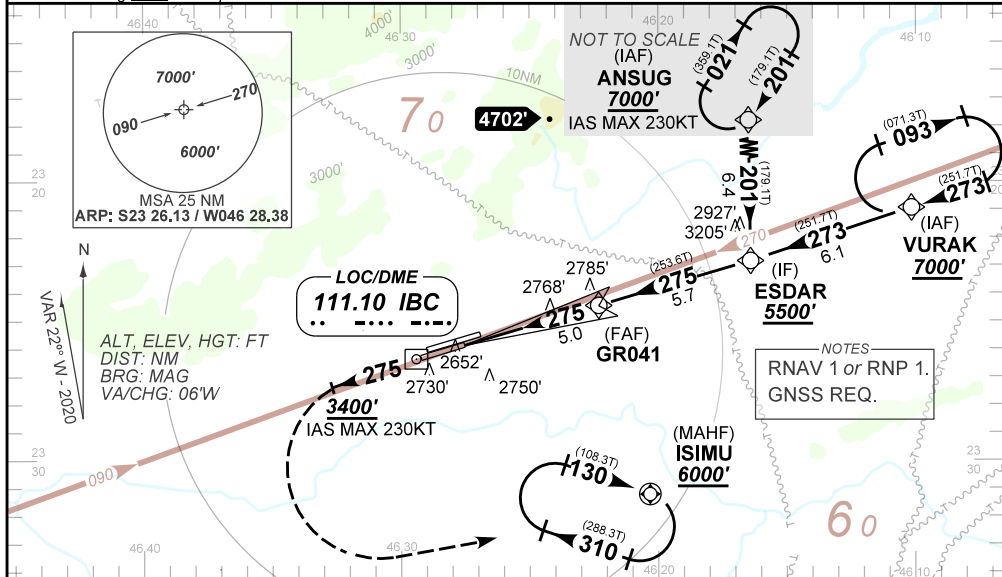
D-ATIS 127.75	APP SÃO PAULO 129.75 119.15 129.00 134.90 123.25 123.90 125.60 121.35 124.70 121.50	TWR GUARULHOS 118.40 132.75 135.20 121.50	GNDC GUARULHOS 121.70 126.90
-------------------------	---------------------------------------------------------------------------------------------------	---------------------------------------------------------	----------------------------------------

LOC IBC 111.10 MHz	FINAL CRS 275°	FAF: 4090'	CAT / DA / (OCH): 2646' / (200')	N/A
------------------------------	--------------------------	----------------------	--------------------------------------------	-----

APCH Perdida: Subir para **6000'**. Manter rumo **275°** e gradiente MNM 5.0% até **3400'**. Então, curvar imediatamente à ESQUERDA direto ISIMU para espera.
Missed APCH: Climb to **6000'**. Maintain course **275°** and MNM gradient 5.0% until **3400'**. Then, turn LEFT immediately direct to ISIMU for holding.

RMK: 1) (*) VIS RVR ALS 550m para aproximação utilizando Diretor de Voo, Piloto Automático ou Head-Up Display (HUD). 1) (*) VIS RVR ALS 550m for approach using a Flight Director, Autopilot or Head-Up Display (HUD).

ARREMETIDA VISUAL RWY27R: Subir para **7000'**. Manter proa **275°**. Após passar **6000'**, curvar à DIREITA proa **045°** e aguardar instruções ATC. VISUAL GO AROUND RWY 27R: Climb to **7000'**. Maintain heading **275°**. After passing **6000'**, turn RIGHT heading **045°** and expect instructions from ATC.



ILS RDH 55'	THR ELEV 2446'	FAF GR041 4090'	IF ESDAR 5500'	TA 8000'
0.0	0.5	5.0	10.7	TO THR 27L (NM)
0.2	0.7	5.2	10.8	TO IBC (NM)

RWY27L	NIL	KT	090	110	130	150	170	190
ALT	NIL	FPM				NIL		
(HGT)	NIL	FAF-MAPT				NA		

STRAIGHT-IN	CAT	A	B	C	D	E
CAT I	DA / (OCH)	2646' / (200')				
	ALS/NO ALS/ RVR ALS (m)	800 / 1200 / 700 (*)				
CIRCLING	MDA / (OCH)	NA				
	VIS (m)					

CHANGES: DEC. IDENT. MSA. PROC.