

INSTRUMENT APPROACH
CHART (IAC)

CAXIAS DO SUL / Campo dos Bugres (SBCX)

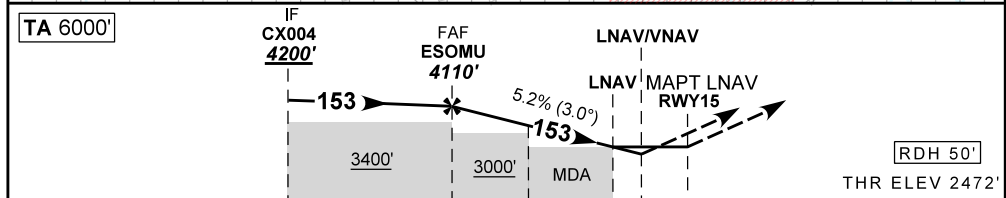
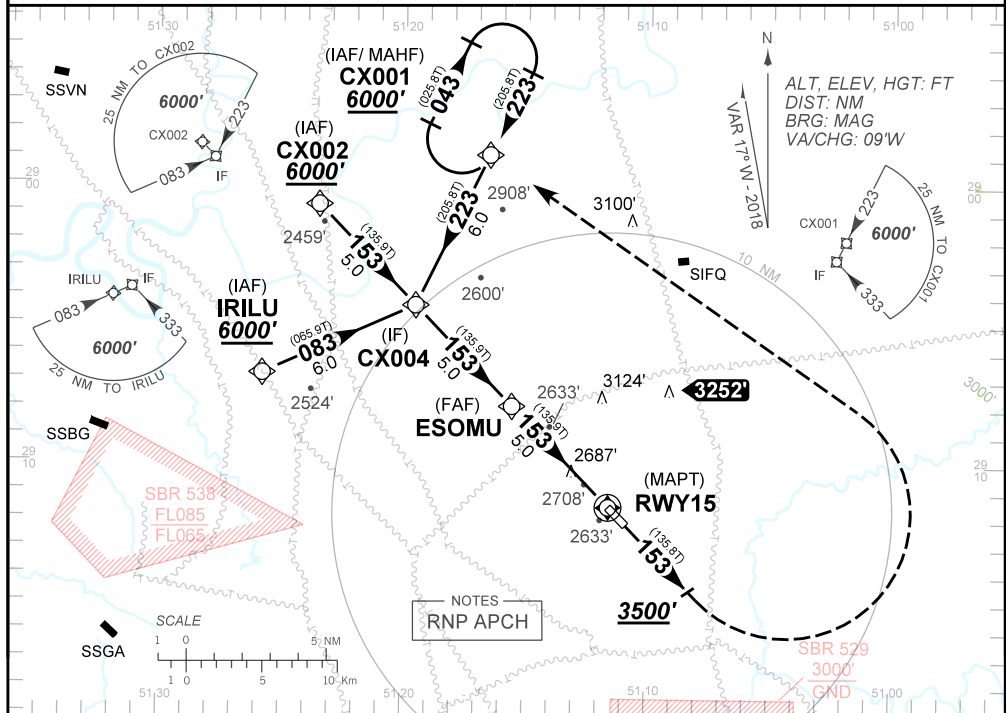
AD ELEV: 2474'

RNAV(GNSS) Z RWY 15

ATIS NIL	APP PORTO ALEGRE 119.00 120.10 120.55 128.90 121.50			AFIS CAXIAS 131.60	GNDC NIL
N/A	FINAL CRS 153°	FAF: 4110'	LNAV/VNAV DA / (OCH): 2869' (397')	LNAV: MDA / (OCH): 3000' (530')	

APCH Perdida: Subir para **6000'** no rumo **153°**. Ao passar **8500'**, curvar à ESQUERDA direto CX001 para espera
Missed APCH: Climb to **6000'** on course **153°**. On passing **8500'**, turn LEFT direct to CX001 for holding.

RMK: 1) Para sistemas não compensados, LNAV/VNAV NÃO AUTORIZADO abaixo de -10°C.
1) For uncompensated systems, LNAV/VNAV procedure NOT AUTHORIZED below -10°C.



TO THR 15 (NM)	10.0	5.0	2.0	1.5	1.1	0.0	
	ESOMU	4.0	3.0	2.0	1.5	RWY15	
	4110	3792	3474	3156	3000	ALT	
	1638	1320	1002	684	528	(HGT)	
	KT	090	110	130	150	170	190
	FPM	500	600	700	800	900	NA
	FAF-MAPT	NA					

STRAIGHT-IN	CAT	A	B	C	D	E
	DA / (OCH)	2869' / (397')				
LNAV/VNAV	ALS/NO ALS / RVR ALS (m)	NIL / 1700 / NIL				
	MDA / (OCH)	3000' / (530')				
LNAV	ALS/NO ALS/RVR ALS (m)	NIL / 1700 / NIL			NIL / 2400 / NIL	
	MDA / (OCH)	NA				
CIRCLING	MDA / (OCH)	NA				
	VIS (m)	NA				

CHANGES: FAF ID.