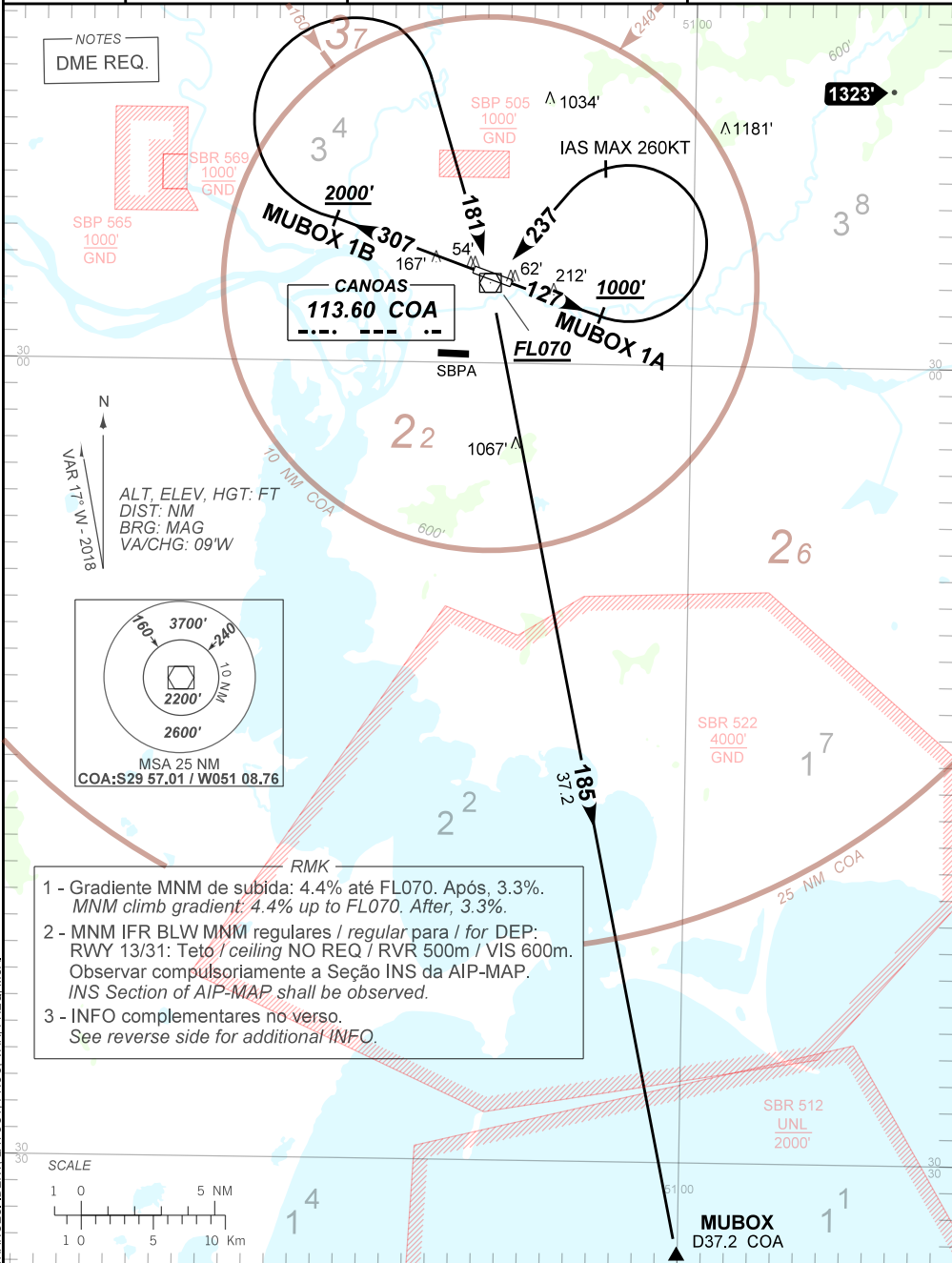


TA 4000'	TWR CANOAS 118.50 122.80 (MIL) 121.50	APP PORTO ALEGRE 119.00 120.10 120.55 128.90 121.50	ACC CURITIBA 127.40 126.75 128.45 135.85 121.50
----------	---	--	---



CHANGES: IDENT, LAYOUT, PROC, VAR, FREQ, MSA

— R M K —

4 - Obstáculos próximos não considerados para cálculo do gradiente de subida (PDG):

*Close-in obstacles not considered for procedure gradient (PDG):*

RWY 13: Árvores/Trees: a partir de/from THR31, AZM063, DIST 165m, ELEV 62'.

RWY 31: Árvores/Trees: a partir de/from THR13, AZM344, DIST 150m, ELEV 54'.