

**INSTRUMENT APPROACH
CHART (IAC)**

CURITIBA / Afonso Pena, INTL (SBCT)

VOR Z RWY 15

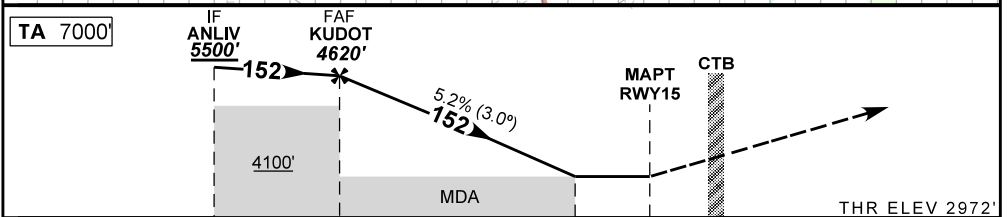
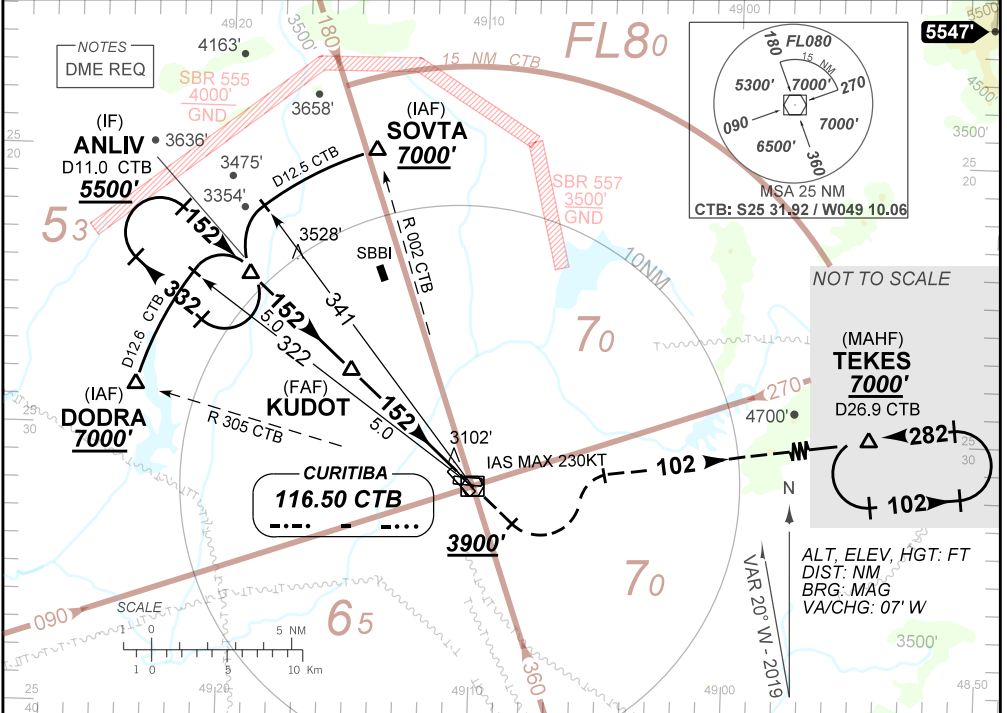
AD ELEV: 2989'

D-ATIS 127.80	APP CURITIBA 119.70 119.95 120.65 120.95 129.55 133.15 121.50	TWR CURITIBA 118.15 121.50	GNDC CURITIBA 121.90
VOR CTB 116.50 MHZ	FINAL CRS 152°	FAF: 4620'	N/A
VOR		MDA / (OCH): 3570' / (600')	

APCH perdida: 1) Subir para **7000'** RDL **152** CTB. Após passar **3900'**, curvar à ESQUERDA RDL **102** CTB para espera em TEKES. 2) IAS MAX na curva da aproximação perdida **230** KT.

Missed APCH: 1) Climb to **7000'**, **152** CTB RDL. After passing **3900'**, turn LEFT **102** CTB RDL for holding at TEKES. 2) Missed approach turn limited to **230** KT IAS maximum.

RMK: NIL



TO THR 15 (NM)	10.0	5.0	1.7	0.0
TO CTB (DME)	11.0	6.0	2.7	1.0

KUDOT	4.0	3.0	2.0	1.7	RWY15	
4620	4296	3977	3659	3570	ALT	
1648	1324	1005	687	598	(HGT)	
KT	090	110	130	150	170	190
FPM	500	600	700	800	900	NA
FAF-MAPT 5NM	NA					

STRAIGHT-IN	CAT	A	B	C	D	E
VOR	MDA / (OCH)	3570' / (600')				NA
	ALS / NO ALS / RVR ALS (m)	800 / 1600 / NIL				
CIRCLING	MDA / (OCH)	NA				NA
	VIS (m)	NA				

CHANGES: ALT. DEC.