

INSTRUMENT APPROACH  
CHART (IAC)

GUAJARÁ-MIRIM / Guajar-Mirim (SBGM)

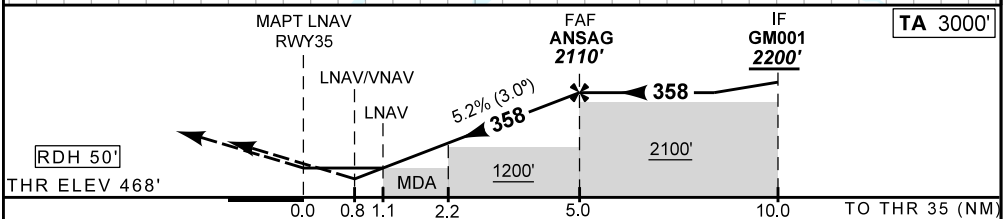
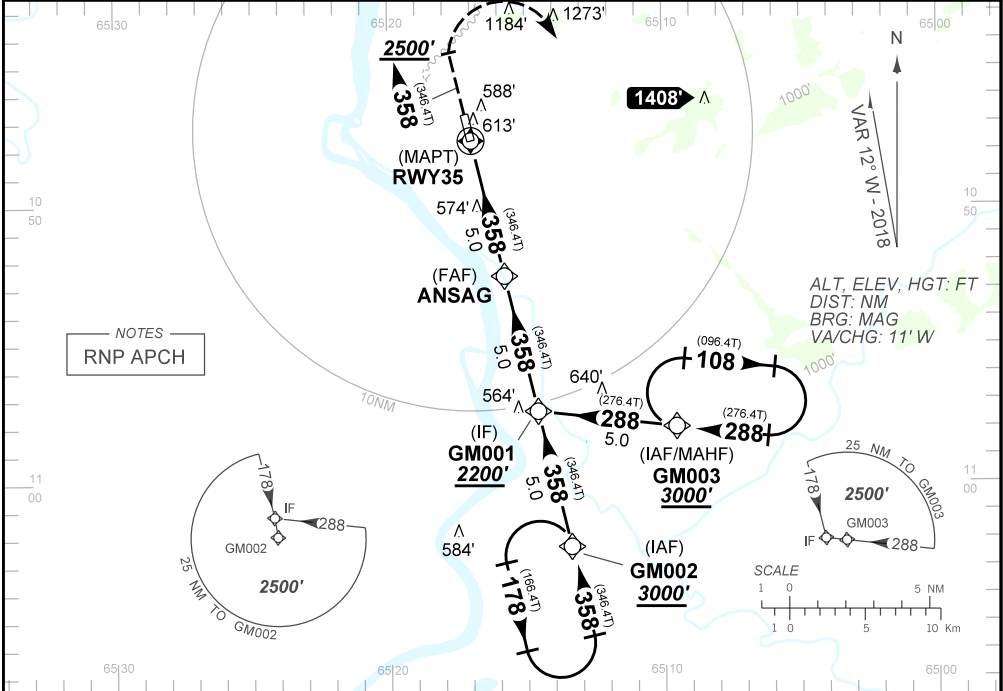
AD ELEV: 479'

RNAV (GNSS) RWY 35

ATIS NIL	APP NIL	AFIS GUAJAR-MIRIM 125.90		GNDC NIL
N/A	FINAL CRS 358°	FAF 2110'	LNAV/VNAV DA / (OCH): 787' (320')	LNAV MDA / (OCH): 880' (420')

APCH Perdida: 1) Subir para **3000'**. Manter rumo **358°** at cruzar **2500'**. Curvar a DIREITA direto GM003 para espera.  
Missed APCH: 1) Climb to **3000'**. Maintain course **358°** until passing **2500'**. Turn RIGHT direct to GM003 for holding.

RMK: 1) Para sistemas no compensados Baro-VNAV, LNAV/VNAV NAO AUTORIZADO abaixo de 0C ou acima de 50C.  
1) For uncompensated systems Baro-VNAV, LNAV/VNAV NOT AUTHORIZED below 0C or above 50C.



RWY35	1.1	2.2	3.0	4.0	ANSAG						
ALT	880	1206	1473	1792	2110						
(HGT)	412	738	1005	1324	1642						

KT	090	110	130	150	170	190
FPM	500	600	700	800	900	NA
FAF-MAPT	NA					

STRAIGHT-IN	CAT	A	B	C	D	E
LNAV/VNAV	DA / (OCH)	787' / (320')				NA
	ALS/NO ALS/ RVR ALS (m)	NIL / 1400 / NIL				
LNAV	MDA / (OCH)	880' / (420')				
	ALS/NO ALS/RVR ALS (m)	NIL / 1600 / NIL		NIL / 1900 / NIL		
CIRCLING	MDA / (OCH)	NA				
	VIS (m)					

CHANGES: NEW CHART.