

**INSTRUMENT APPROACH
CHART (IAC)**

SÃO PAULO / Guarulhos - Gov. André Franco Montoro, INTL (SBGR)

AD ELEV: 2461'

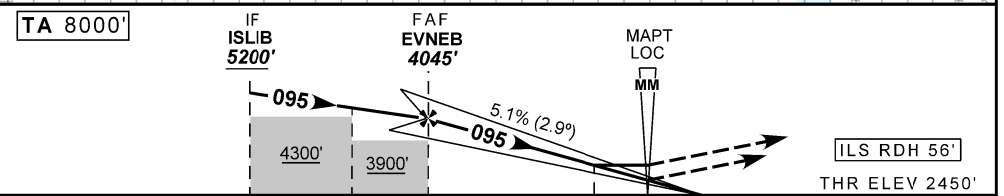
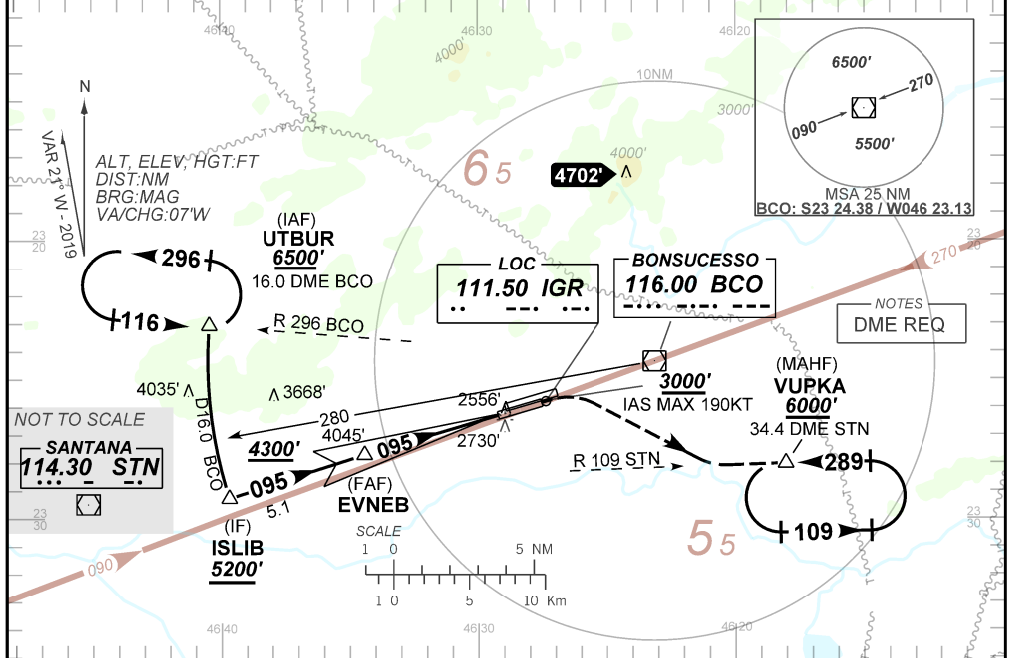
ILS Q ou / or LOC Q RWY 09R

D-ATIS 127.75	APP SÃO PAULO 129.75 119.15 120.45 120.85 133.85 121.50	TWR GUARULHOS 118.40 132.75 135.20 121.50	GNDC GUARULHOS 121.70 126.90
-------------------------	---	---	--

LOC IGR 111.50 MHz	FINAL CRS 095°	FAF: 4045'	CAT I DA / (OCH): 2662' / (212')	LOC ONLY MDA / (OCH): 2980' / (530')
------------------------------	--------------------------	----------------------	--	--

APCH Perdida: 1) Subir para **6000'**, gradiente MNM 5%. Manter rumo **095** até cruzar **3000'**. Após, curvar à DIREITA, RDL **109** STN para espera em VUPKA. 2) IAS MAX 190KT.
Missed APCH: 1) Climb to **6000'**, MNM gradient 5%. Mantain course **1095** until passing **3000'**. Then, turn RIGHT, **109** STN RDL for holding at VUPKA. 2) IAS MAX 190KT.

RMK: NIL



TO THR 09R (NM)	10.1	7.0	5.0	1.5	0.5	0.0
TO BCO (DME)	16.0	12.9	10.9	7.4	6.4	5.9

EVNEB	4.0	3.0	2.0	1.0	0.5	RWY09	KT	90	110	130	150	170	190
4045	3746	3436	3126	2816	2662	ALT	FPM	500	600	700	800	900	1000
1595	1297	986	676	366	212	(HGT)	FAF-MAPT	NA					

STRAIGHT-IN	CAT	A	B	C	D	NA
CAT I	DA / (OCH)	2662' / (212')				
	ALS/NO ALS/ RVR ALS(m)	800 / 1200 / 700				
LOC	MDA / (OCH)	2980' / (530')				
	ALS/NO ALS/ RVR ALS(m)	800 / 1600 / NIL		1700 / 2400 / NIL		
CIRCLING	MDA / (OCH)	NA				
	VIS (m)					

CHANGES: NEW CHART