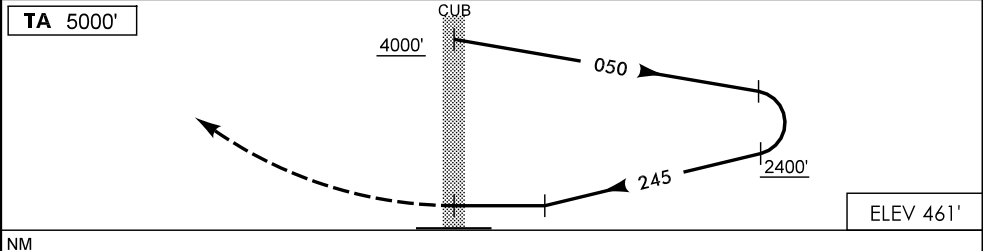
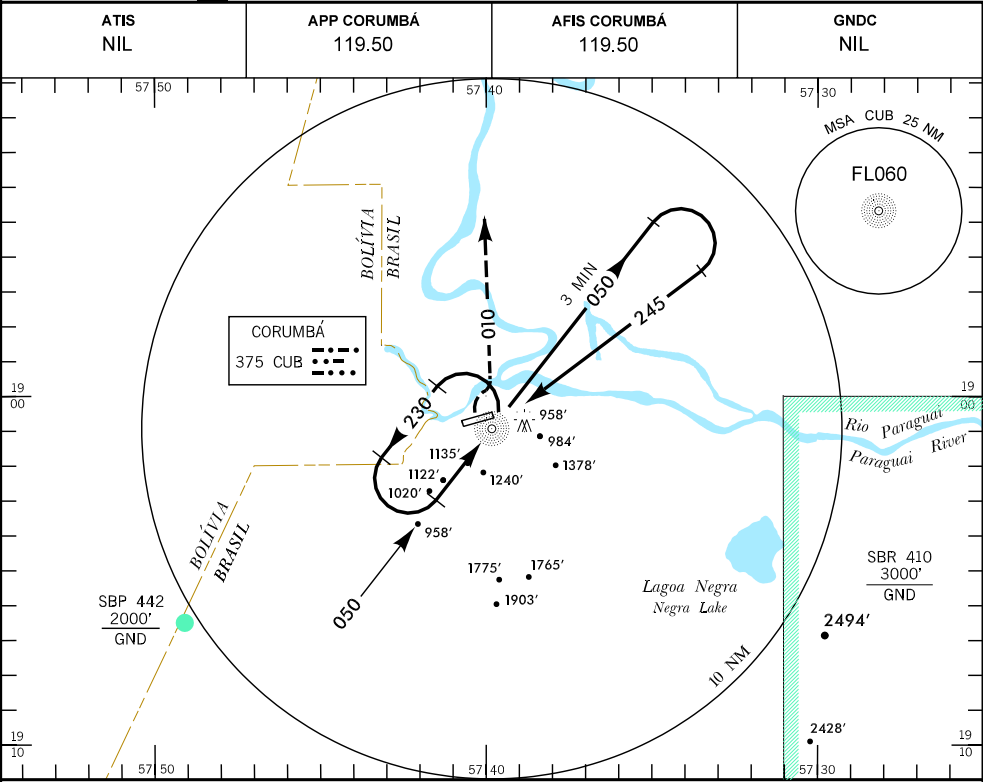


IAC - SBCR

WGS-84



**APROXIMAÇÃO PERDIDA**  
MISSED APPROACH

SUBIR PARA 4000' EM CURVA À DIREITA QDR 010 APÓS, CURVA À DIREITA RETORNANDO AO AUXÍLIO  
CLIMB TO 4000' TURNING TO THE RIGHT QDR 010. THEN, TURNING TO THE RIGHT, COMING BACK TO NAVIGATION AID.

**RMK:** PROIBIDO CIRCULAR PELO SETOR SUL DO AD.  
IT IS PROHIBITED CIRCLE THROUGH SOUTH SECTOR OF AD.

| C | POUSO DIRETO RWY 27 | STRAIGHT-IN TO RWY 27 | IFR OPS | DIURNA / NOTURNA DAY / NIGHT | PARA CIRCULAR TO CIRCLING (RMK) |       |              |        |
|---|---------------------|-----------------------|---------|------------------------------|---------------------------------|-------|--------------|--------|
| A | NDB                 |                       |         |                              | CAT                             | MDA   | TETO CEILING | VIS    |
| T | NA                  |                       |         |                              | A                               | 1560' | 1100'        | 4900 M |
| A | NA                  |                       |         |                              | B                               | 1760' | 1300'        | 5000 M |
| B | NA                  |                       |         |                              | C                               | 1940' | 1500'        | 5000 M |
| C | NA                  |                       |         |                              | D                               | NA    |              |        |
| D | NA                  |                       |         |                              | E                               | NA    |              |        |
| E | NA                  |                       |         |                              |                                 |       |              |        |

| RAZÃO DE DESCIDA NA APROXIMAÇÃO FINAL |     | RATE OF DESCENT ON FINAL APPROACH |     |     |     |     |
|---------------------------------------|-----|-----------------------------------|-----|-----|-----|-----|
| KT                                    | 090 | 110                               | 120 | 130 | 140 | 160 |
| FPM                                   | 600 |                                   |     |     |     |     |

Z:\AIP-MA-P\MAPY\CORUMBÁ-SBCR\br-cr\_iac\_rwy27.dgn

DEPARTAMENTO DE CONTROLE DO ESPAÇO AÉREO - COMAER - BRASIL