

INSTRUMENT APPROACH
CHART (IAC)

SÃO PEDRO DA ALDEIA / São Pedro da Aldeia, MIL (SBES)

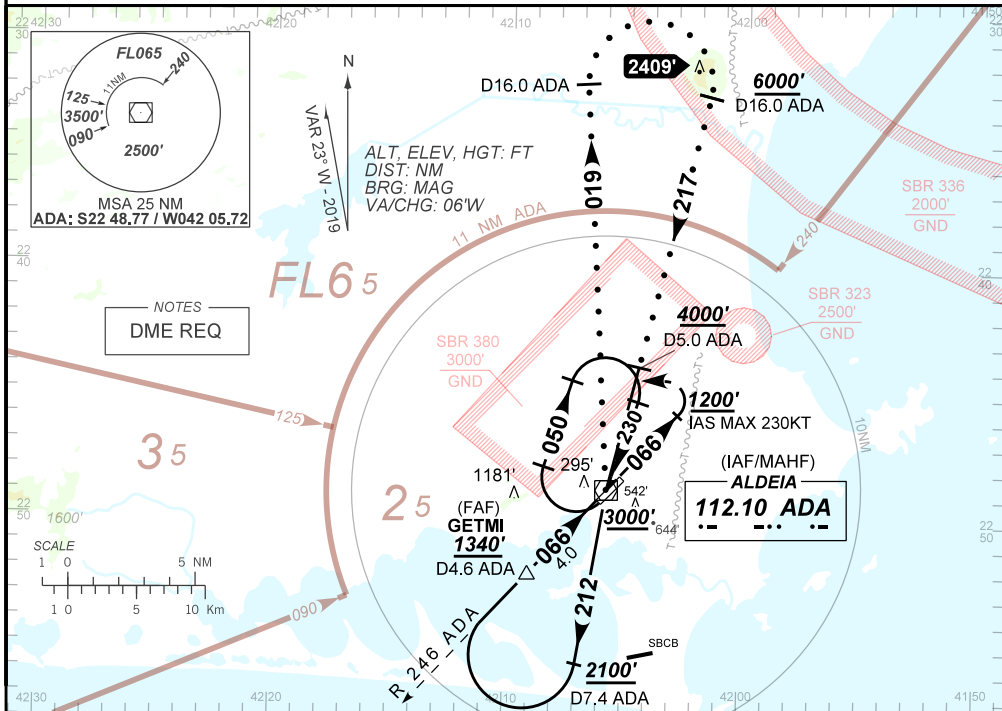
AD ELEV: 61'

VOR X RWY 07

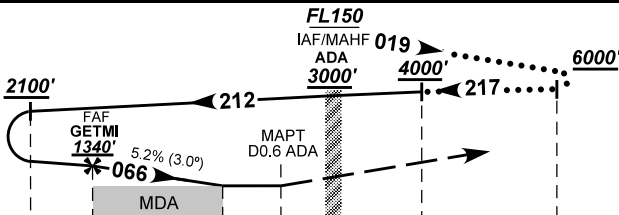
ATIS NIL	APP ALDEIA 119.45 120.30	TWR ALDEIA 118.30 122.80 (MIL) 121.50	GND C ALDEIA 121.90
VOR/DME ADA 112.10 MHz	FINAL CRS 066°	FAF: 1340'	VOR MDA / (OCH): 470' / (460')

APCH Perdida: Subir para **3000'**. Manter rumo **066** até **1200'**. Então, curvar à ESQUERDA direto VOR Aldeia para espera.
Missed APCH: Climb to **3000'**. Maintain course **066** until passing **1200'**. Then, turn LEFT direct to Aldeia VOR for holding.

RMK: NIL.



TA 5000'



TO THR 07 (NM)	4.0	1.3	0.0		
TO ADA (DME)	7.4	4.6	1.9	5.0	16.0

	GETMI	3.0	2.0	1.3	RWY07							
	1340	1021	703	470	ALT	KT	090	110	130	150	170	190
	1324	1005	687	460	(HGT)	FPM	500	600	700	800	900	1000
						FAF-MAPT	NA					

STRAIGHT-IN	CAT	A	B	C	D	E
	MDA / (OCH)	470' / (460')				
VOR	ALS/NO ALS/ RVR ALS (m)	NIL / 1600 / NIL			NIL / 2100 / NIL	
	MDA / (OCH)	NA				
CIRCLING	VIS (m)	NA				

CHANGES: LAYOUT, PROC. MSA.