

AD ELEV: 2334'

RNAV (GNSS) RWY 17

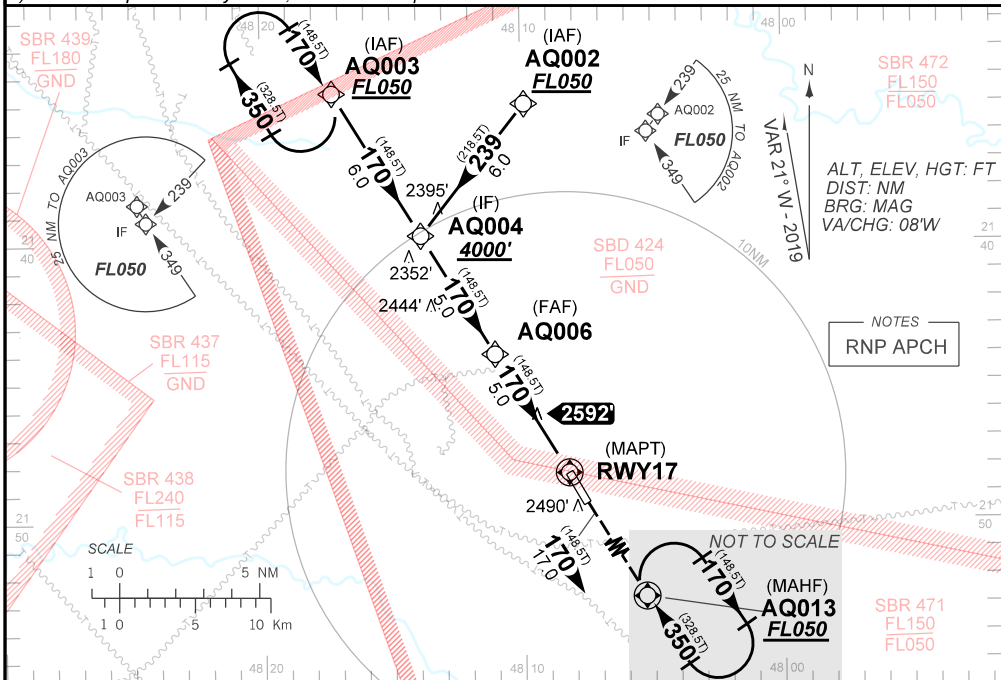
ATIS NIL	APP ACADEMIA 120.10 122.40 121.50			AFIS ARARAQUARA 131.60	GNDC NIL
N/A	FINAL CRS 170°	FAF: 3920'	LNAV/VNAV DA / (OCH): 2718' / (450')	LNAV MDA / (OCH): 2840' / (570')	

APCH Perdida: Subir para **FL050** direto AQ013 para espera.

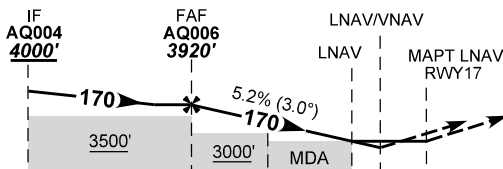
Missed APCH: Climb to **FL050** direct to AQ013 for holding.

RMK: 1) Para sistemas não compensados, LNAV/VNAV NÃO AUTORIZADO abaixo de -10°C.

1) For uncompensated systems, LNAV/VNAV procedure NOT AUTHORIZED below -10°C.



TA 4000'



RDH 50'

THR ELEV 2272'

TO THR 17(NM)

	AQ006	4.0	3.0	2.0	1.6	RWY17
	3920	3590	3270	2950	2840	ALT
	1648	1318	998	678	568	(HGT)

KT	090	110	130	150	170	190
FPM	490	600	710	820	930	104
FAF-MAPT	NA					

CHANGES: PROCEDURE

STRAIGHT-IN	CAT	A	B	C	D	E
LNAV/VNAV	DA / (OCH)	2718' / (450')				
	ALS/NO ALS/ RVR ALS (m)	NIL / 1600 / NIL		NIL / 2100 / NIL		
LNAV	MDA / (OCH)	2840' / (570')				
	ALS/NO ALS/ RVR ALS (m)	NIL / 1600 / NIL		NIL / 2600 / NIL		
CIRCLING	MDA / (OCH)	NA				
	VIS (m)	NA				